



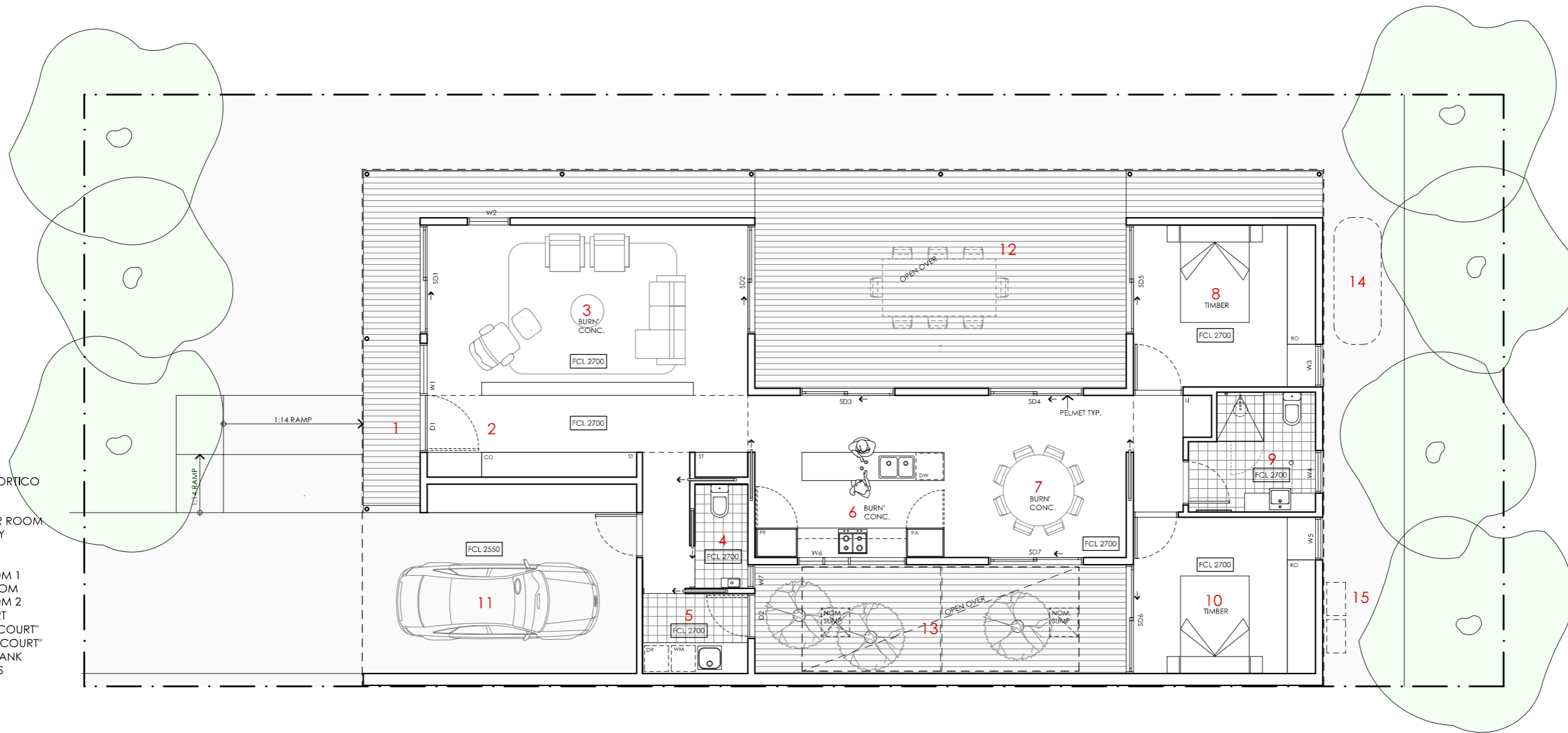


ACACIA HOUSE

<p>LEGEND</p> <p>N/A</p>	<p>PROJECT</p>  <p>Australian Government</p>  <p>YourHome Australia's guide to environmentally sustainable homes</p>  <p>Design For Place</p>	<p>DESIGN</p> <p>Acacia House</p>	<p>DETAILS</p> <p>Drawing title: Site Plan</p> <p>Scale: 1:200</p> <p>Paper size: A3</p> <p>Drawing number: 1/10</p> <p>Date issued: June 2023</p> <p>Project stage: Preliminary</p> 
<p>DISCLAIMER</p> <p>This house plan is a guide only. It does not constitute legal or other professional advice. You should seek legal or other professional advice in relation to your specific circumstances before adopting any recommendation made within it e.g. advice on structural engineering or building certification requirements. The Commonwealth does not accept responsibility for the accuracy or completeness of this plan, its fitness for a particular purpose, or compliance with any regulatory requirements and standards. Further, the Commonwealth also disclaims liability, to the extent permitted by law, for any liabilities, losses, damages and costs arising from any reliance on the contents of this plan.</p>		<p>DESIGNED FOR</p> <p>Darwin</p> <p>Technical drawings should be read with the Acacia House Darwin 'Design Options' document which includes building specifications and rating information.</p>	

KEY

- 1 ENTRY PORTICO
- 2 ENTRY
- 3 LIVING
- 4 POWDER ROOM
- 5 LAUNDRY
- 6 KITCHEN
- 7 MEALS
- 8 BEDROOM 1
- 9 BATHROOM
- 10 BEDROOM 2
- 11 CARPORT
- 12 "LIVING COURT"
- 13 "WINTER COURT"
- 14 WATER TANK
- 15 SERVICES



LEGEND

- FR FRIDGE
- PA PANTRY
- DW DISH WASHER
- RO ROBE
- DE DESK
- ST STORAGE CUPBOARD
- SH SHELVING
- WM WASHING MACHINE
- DR CLOTHES DRYER
- CO COAT CUPBOARD
- LI LINEN CUPBOARD
- FCL FINISHED CEILING LEVEL

ACACIA HOUSE

NOTES

GFL LIVING 123 m2
 CARPORT 23 m2
TOTAL GFA 146 m2 (including carport)

REFER TO NCC FOR SANITARY COMPARTMENT CIRCULATION, WALL REINFORCEMENT AND THRESHOLD/HOB REQUIREMENTS
 DOOR OPENINGS, CORRIDOR WIDTHS AND THRESHOLDS, ENTRY RAMP GRADES AND COVER ETC TO NCC REQUIREMENTS
 CONSTRUCTION NEAR BOUNDARY MUST COMPLY WITH NCC REQUIREMENTS - REVISE TO SUIT LOCAL REGULATIONS AND BUILDING ENVELOPES ETC
 SETBACK FROM BOUNDARIES SHOWN INDICATIVELY ONLY - REVISE TO SUIT LOCAL REGULATIONS AND BUILDING ENVELOPES ETC
 NOTE: GFA CALCULATIONS DO NOT INCLUDE DECKS, TERRACES, COURTYARDS, VERANDAH, VOIDS, STAIRS & BALCONIES @ UFL. NOTE THAT INTERNAL ROOM DIMENSIONS ARE NOMINAL ONLY.
 CEILING INSULATION VALUES SPECIFIED EXTEND TO EAVES

PROJECT



DISCLAIMER

This house plan is a guide only. It does not constitute legal or other professional advice. You should seek legal or other professional advice in relation to your specific circumstances before adopting any recommendation made within it e.g. advice on structural engineering or building certification requirements. The Commonwealth does not accept responsibility for the accuracy or completeness of this plan, its fitness for a particular purpose, or compliance with any regulatory requirements and standards. Further, the Commonwealth also disclaims liability, to the extent permitted by law, for any liabilities, losses, damages and costs arising from any reliance on the contents of this plan.

DESIGN

Acacia House

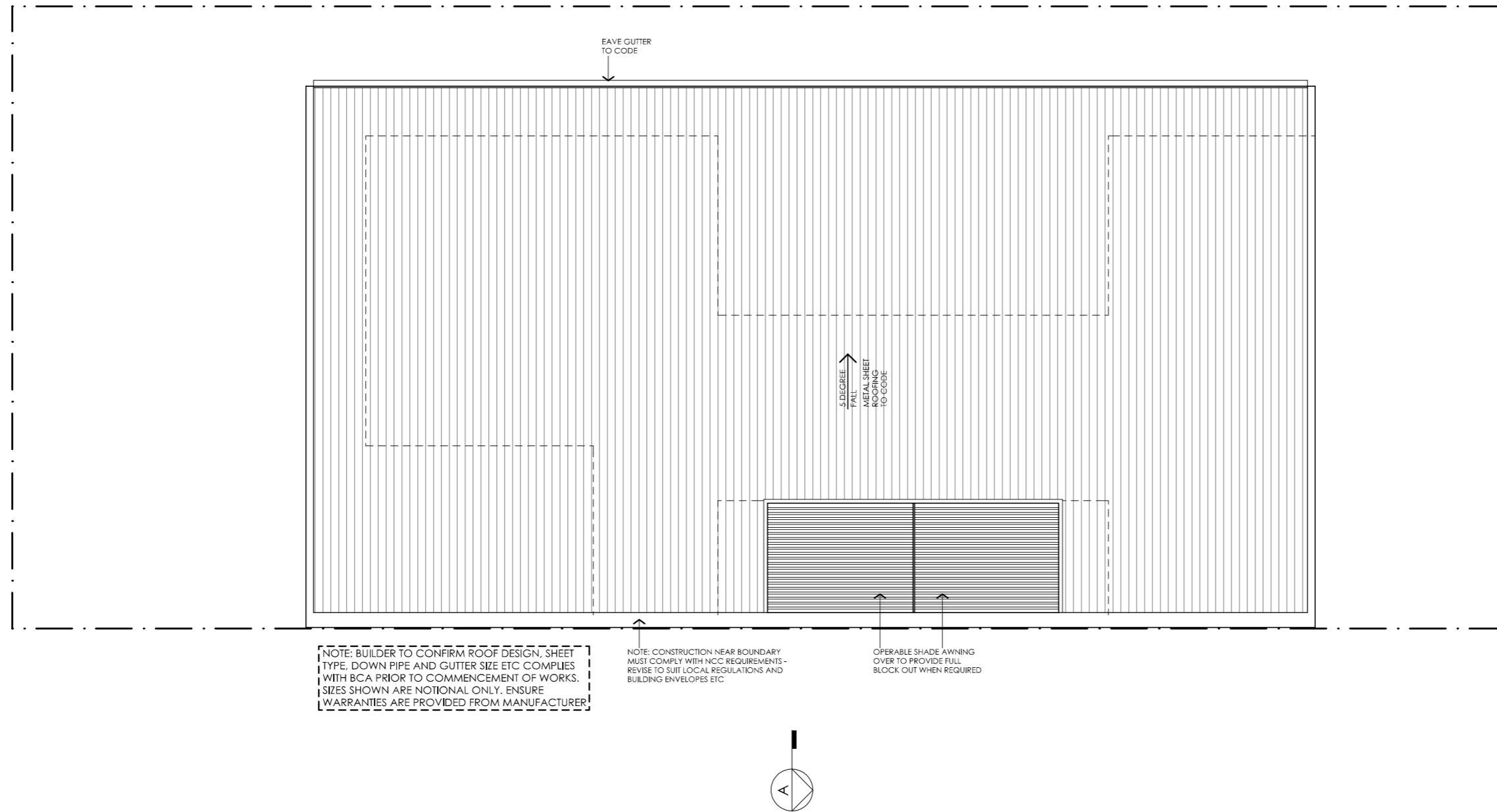
DESIGNED FOR Darwin

Technical drawings should be read with the Acacia House Darwin 'Design Options' document which includes building specifications and rating information.





DETAILS

Drawing title: Floor Plan
Scale: 1:100
Paper size: A3
Drawing number: 2/10
Date issued: June 2023
Project stage: Preliminary








ACACIA HOUSE

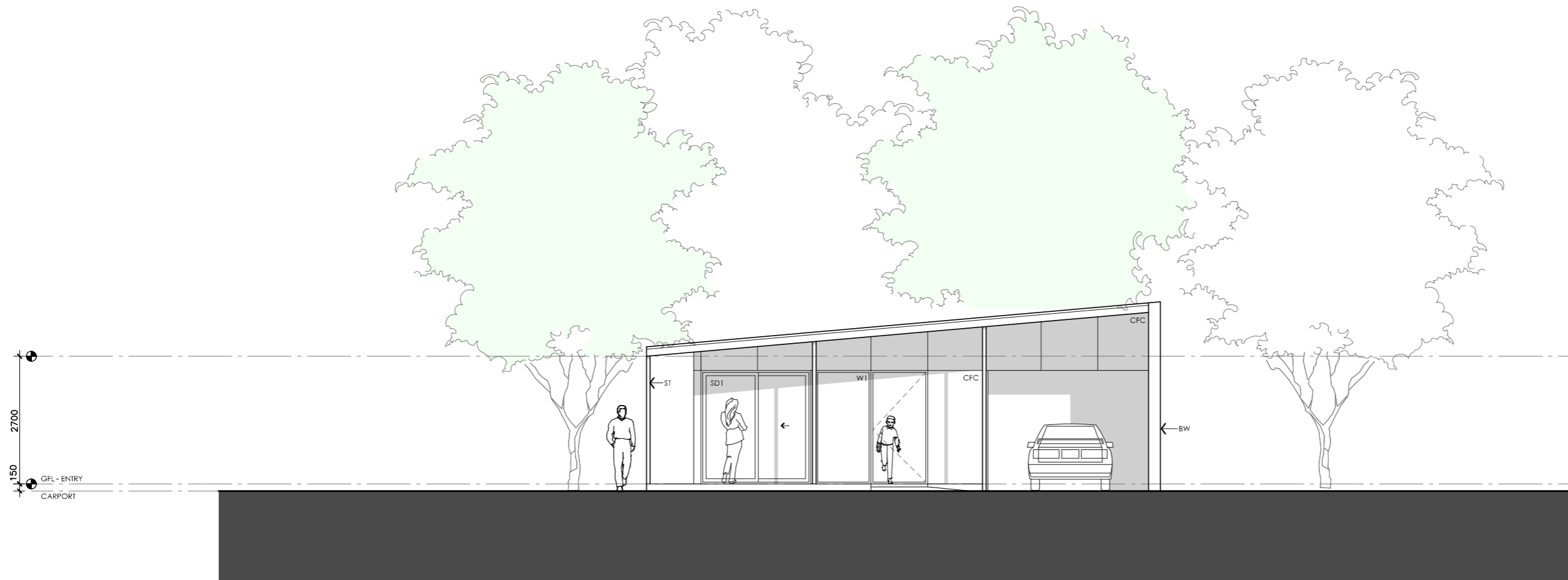
<p>NOTES</p> <p>GFL LIVING 123 m2 CARPORT 23 m2</p> <p>TOTAL GFA 146 m2 (including carport)</p> <p><small>NOTE: GFA CALCULATIONS DO NOT INCLUDE DECKS, TERRACES, COURTYARDS, VERANDAHES, VOIDS, STAIRS & BALCONIES @ UFL. NOTE THAT INTERNAL ROOM DIMENSIONS ARE NOMINAL ONLY AND GENERALLY INCLUDE JOINERY WITHIN THOSE DIMENSIONS.</small></p>	<p>PROJECT</p>  <p>Australian Government</p>  <p>YourHome Australia's guide to environmentally sustainable homes</p>  <p>Design For Place</p> <p>DISCLAIMER</p> <p>This house plan is a guide only. It does not constitute legal or other professional advice. You should seek legal or other professional advice in relation to your specific circumstances before adopting any recommendation made within it e.g. advice on structural engineering or building certification requirements. The Commonwealth does not accept responsibility for the accuracy or completeness of this plan, its fitness for a particular purpose, or compliance with any regulatory requirements and standards. Further, the Commonwealth also disclaims liability, to the extent permitted by law, for any liabilities, losses, damages and costs arising from any reliance on the contents of this plan.</p>	<p>DESIGN</p> <p>Acacia House</p> <p>DESIGNED FOR</p> <p>Darwin</p> <p>Technical drawings should be read with the Acacia House Darwin 'Design Options' document which includes building specifications and rating information.</p>	<p>DETAILS</p> <p>Drawing title: Roof Plan</p> <p>Scale: 1:100</p> <p>Paper size: A3</p> <p>Drawing number: 3/10</p> <p>Date issued: June 2023</p> <p>Project stage: Preliminary</p> 
--	---	--	---



01 | EAST ELEVATION
1:100

ACACIA HOUSE

<p>LEGEND</p> <p>BW FACE BRICK WALL TYPE & COLOUR TBC</p> <p>WB WEATHERBOARD CLADDING TYPE & COLOUR TBC</p> <p>CFC COMPRESSED FC SHEET ON TIMBER FRAME EXPRESSED JOINT AT EDGES INDICATED</p> <p>MF FOLDED METAL FASCIA COLOUR TBC</p> <p>ST STEEL WORK COLOUR TBC</p> <p>GD GARAGE DOOR COLOUR TBC</p> <p>AL ALUMINIUM COVER PLATE COLOUR TO MATCH WINDOW FRAMES</p>	<p>PROJECT</p>  <p>Australian Government</p>  <p>YourHome Australia's guide to environmentally sustainable homes</p>  <p>Design For Place</p> <p>DISCLAIMER</p> <p>This house plan is a guide only. It does not constitute legal or other professional advice. You should seek legal or other professional advice in relation to your specific circumstances before adopting any recommendation made within it e.g. advice on structural engineering or building certification requirements. The Commonwealth does not accept responsibility for the accuracy or completeness of this plan, its fitness for a particular purpose, or compliance with any regulatory requirements and standards. Further, the Commonwealth also disclaims liability, to the extent permitted by law, for any liabilities, losses, damages and costs arising from any reliance on the contents of this plan.</p>	<p>DESIGN</p> <p>Acacia House</p> <p>DESIGNED FOR</p> <p>Darwin</p> <p>Technical drawings should be read with the Acacia House Darwin 'Design Options' document which includes building specifications and rating information.</p>	<p>DETAILS</p> <p>Drawing title: Elevation-East</p> <p>Scale: 1:100</p> <p>Paper size: A3</p> <p>Drawing number: 4/10</p> <p>Date issued: June 2023</p> <p>Project stage: Preliminary</p>
--	---	--	--



01 | NORTH ELEVATION
1:100

ACACIA HOUSE

LEGEND

- BW FACE BRICK WALL
TYPE & COLOUR TBC
- WB WEATHERBOARD CLADDING
TYPE & COLOUR TBC
- CFC COMPRESSED FC SHEET ON TIMBER FRAME
EXPRESSED JOINT AT EDGES INDICATED
- MF FOLDED METAL FASCIA
COLOUR TBC
- ST STEEL WORK
COLOUR TBC
- GD GARAGE DOOR
COLOUR TBC
- AL ALUMINIUM COVER PLATE
COLOUR TO MATCH WINDOW FRAMES

PROJECT



DISCLAIMER

This house plan is a guide only. It does not constitute legal or other professional advice. You should seek legal or other professional advice in relation to your specific circumstances before adopting any recommendation made within it e.g. advice on structural engineering or building certification requirements. The Commonwealth does not accept responsibility for the accuracy or completeness of this plan, its fitness for a particular purpose, or compliance with any regulatory requirements and standards. Further, the Commonwealth also disclaims liability, to the extent permitted by law, for any liabilities, losses, damages and costs arising from any reliance on the contents of this plan.

DESIGN

Acacia House

**DESIGNED FOR
Darwin**

Technical drawings should be read with the Acacia House Darwin 'Design Options' document which includes building specifications and rating information.

DETAILS

Drawing title: Elevation-North

Scale: 1:100

Paper size: A3

Drawing number: 5/10

Date issued: June 2023

Project stage: Preliminary



01 | SOUTH ELEVATION
1:100

ACACIA HOUSE

LEGEND	
BW	FACE BRICK WALL TYPE & COLOUR TBC
WB	WEATHERBOARD CLADDING TYPE & COLOUR TBC
CFC	COMPRESSED FC SHEET ON TIMBER FRAME EXPRESSED JOINT AT EDGES INDICATED
MF	FOLDED METAL FASCIA COLOUR TBC
ST	STEEL WORK COLOUR TBC
GD	GARAGE DOOR COLOUR TBC
AL	ALUMINIUM COVER PLATE COLOUR TO MATCH WINDOW FRAMES

PROJECT



Australian Government



YourHome
Australia's guide to environmentally sustainable homes



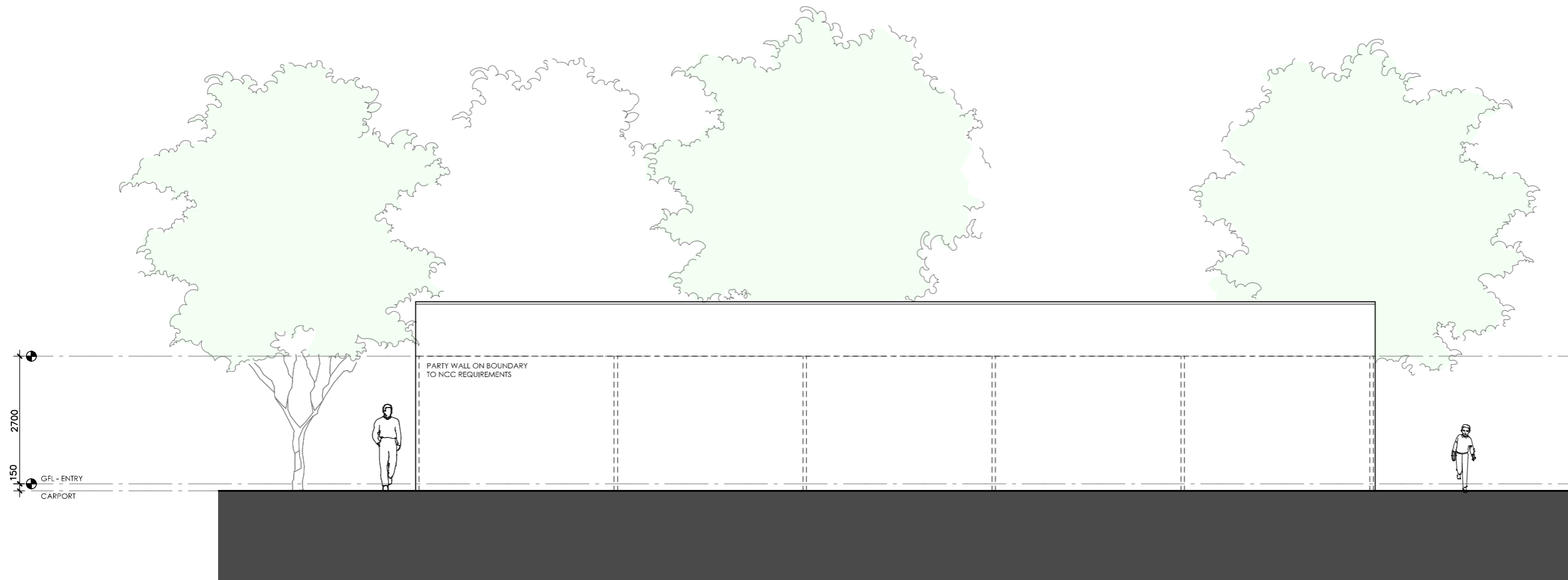
Design For Place

DESIGN Acacia House
DESIGNED FOR Darwin
Technical drawings should be read with the Acacia House Darwin 'Design Options' document which includes building specifications and rating information.

DETAILS
Drawing title: Elevation-South
Scale: 1:100
Paper size: A3
Drawing number: 6/10
Date issued: June 2023
Project stage: Preliminary




DISCLAIMER

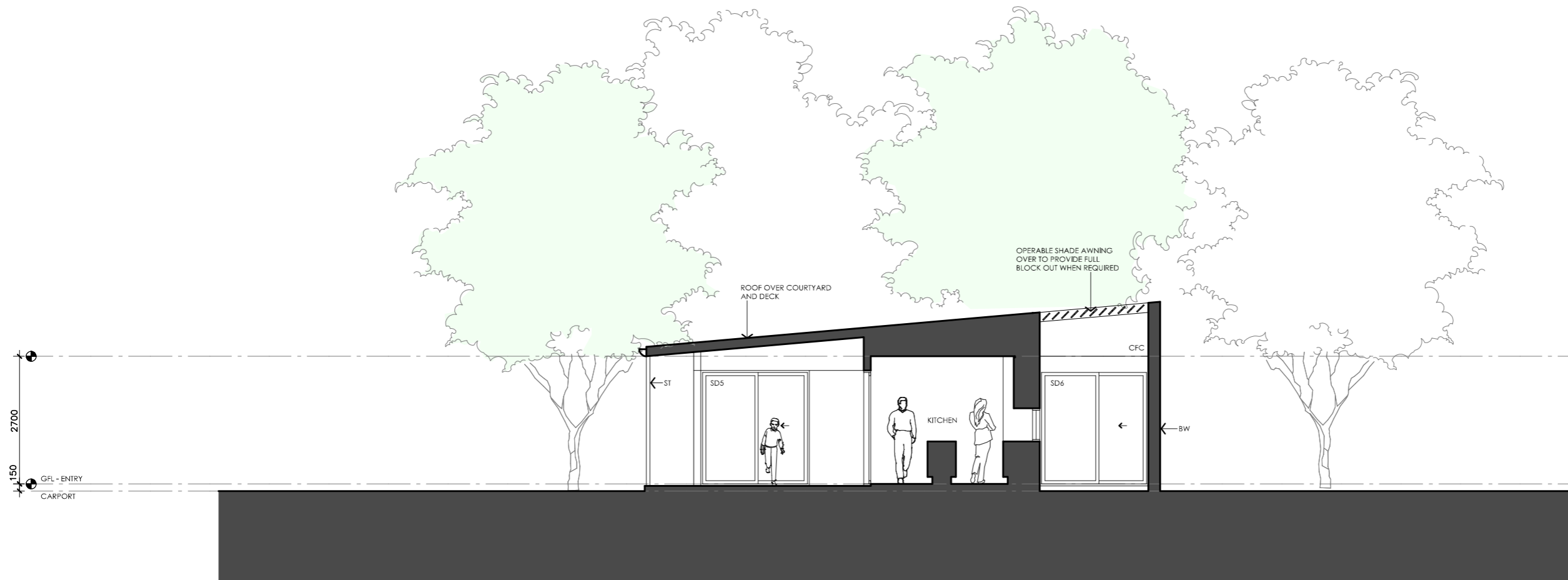
This house plan is a guide only. It does not constitute legal or other professional advice. You should seek legal or other professional advice in relation to your specific circumstances before adopting any recommendation made within it e.g. advice on structural engineering or building certification requirements. The Commonwealth does not accept responsibility for the accuracy or completeness of this plan, its fitness for a particular purpose, or compliance with any regulatory requirements and standards. Further, the Commonwealth also disclaims liability, to the extent permitted by law, for any liabilities, losses, damages and costs arising from any reliance on the contents of this plan.



01 | WEST ELEVATION
1:100




ACACIA HOUSE

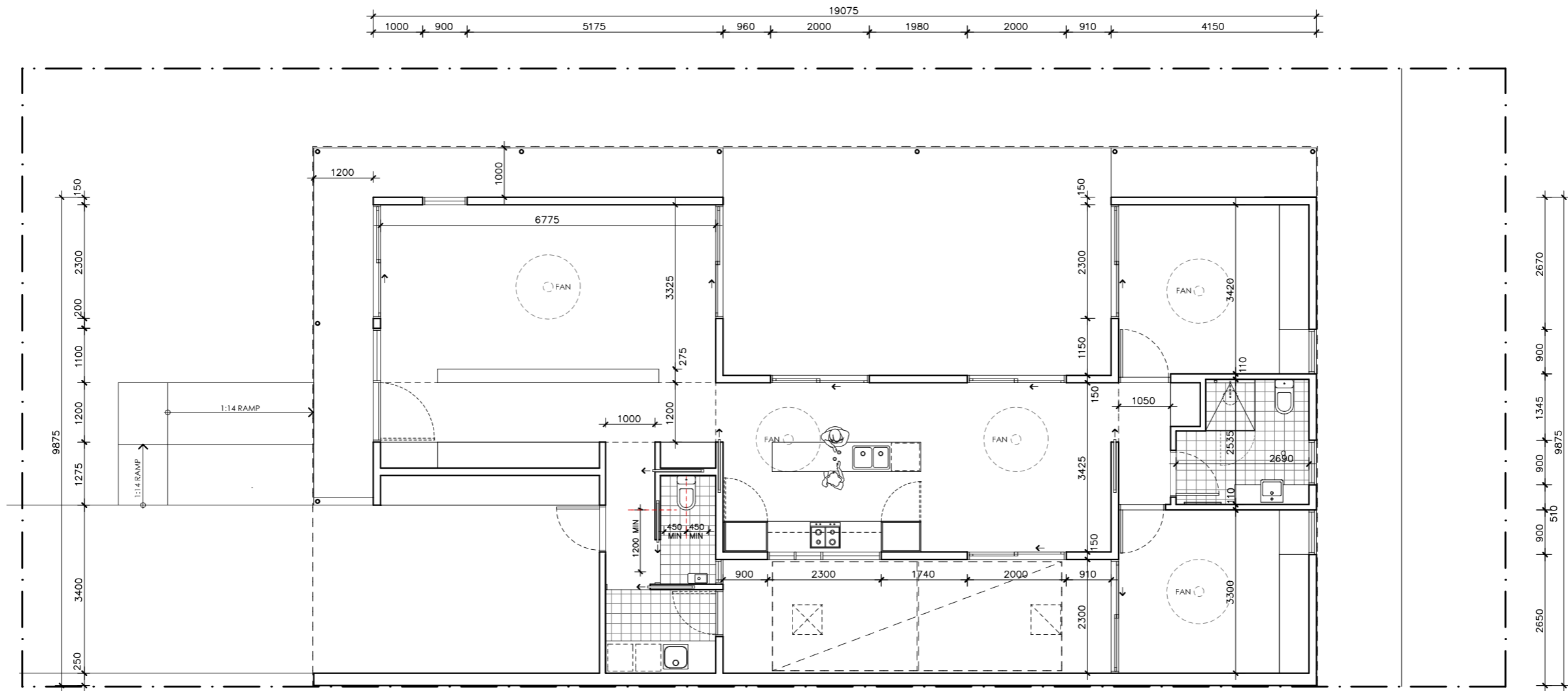
<p>LEGEND</p> <p>BW FACE BRICK WALL TYPE & COLOUR TBC</p> <p>WB WEATHERBOARD CLADDING TYPE & COLOUR TBC</p> <p>CFC COMPRESSED FC SHEET ON TIMBER FRAME EXPRESSED JOINT AT EDGES INDICATED</p> <p>MF FOLDED METAL FASCIA COLOUR TBC</p> <p>ST STEEL WORK COLOUR TBC</p> <p>GD GARAGE DOOR COLOUR TBC</p> <p>AL ALUMINIUM COVER PLATE COLOUR TO MATCH WINDOW FRAMES</p>	<p>PROJECT</p>  <p>Australian Government</p>  <p>YourHome Australia's guide to environmentally sustainable homes</p>  <p>Design For Place</p> <p>DISCLAIMER</p> <p>This house plan is a guide only. It does not constitute legal or other professional advice. You should seek legal or other professional advice in relation to your specific circumstances before adopting any recommendation made within it e.g. advice on structural engineering or building certification requirements. The Commonwealth does not accept responsibility for the accuracy or completeness of this plan, its fitness for a particular purpose, or compliance with any regulatory requirements and standards. Further, the Commonwealth also disclaims liability, to the extent permitted by law, for any liabilities, losses, damages and costs arising from any reliance on the contents of this plan.</p>	<p>DESIGN</p> <p>Acacia House</p> <p>DESIGNED FOR</p> <p>Darwin</p> <p>Technical drawings should be read with the Acacia House Darwin 'Design Options' document which includes building specifications and rating information.</p>	<p>DETAILS</p> <p>Drawing title: Elevation-West</p> <p>Scale: 1:100</p> <p>Paper size: A3</p> <p>Drawing number: 7/10</p> <p>Date issued: June 2023</p> <p>Project stage: Preliminary</p>
--	---	--	--



01 | SECTION AA
1:100

ACACIA HOUSE

<p>LEGEND</p> <p>BW FACE BRICK WALL TYPE & COLOUR TBC</p> <p>WB WEATHERBOARD CLADDING TYPE & COLOUR TBC</p> <p>CFC COMPRESSED FC SHEET ON TIMBER FRAME EXPRESSED JOINT AT EDGES INDICATED</p> <p>MF FOLDED METAL FASCIA COLOUR TBC</p> <p>ST STEEL WORK COLOUR TBC</p> <p>GD GARAGE DOOR COLOUR TBC</p> <p>AL ALUMINIUM COVER PLATE COLOUR TO MATCH WINDOW FRAMES</p>	<p>PROJECT</p>  <p>Australian Government</p>  <p>YourHome Australia's guide to environmentally sustainable homes</p>  <p>Design For Place</p> <p>DISCLAIMER</p> <p>This house plan is a guide only. It does not constitute legal or other professional advice. You should seek legal or other professional advice in relation to your specific circumstances before adopting any recommendation made within it e.g. advice on structural engineering or building certification requirements. The Commonwealth does not accept responsibility for the accuracy or completeness of this plan, its fitness for a particular purpose, or compliance with any regulatory requirements and standards. Further, the Commonwealth also disclaims liability, to the extent permitted by law, for any liabilities, losses, damages and costs arising from any reliance on the contents of this plan.</p>	<p>DESIGN</p> <p>Acacia House</p> <p>DESIGNED FOR</p> <p>Darwin</p> <p>Technical drawings should be read with the Acacia House Darwin 'Design Options' document which includes building specifications and rating information.</p>	<p>DETAILS</p> <p>Drawing title: Section</p> <p>Scale: 1:100</p> <p>Paper size: A3</p> <p>Drawing number: 8/10</p> <p>Date issued: June 2023</p> <p>Project stage: Preliminary</p>
--	---	--	---



ACACIA HOUSE

NOTES	
GFL LIVING	123 m2
CARPORT	23 m2
TOTAL GFA	146 m2 (including carport)

REFER TO NCC FOR SANITARY COMPARTMENT CIRCULATION, WALL REINFORCEMENT AND THRESHOLD/HOB REQUIREMENTS

DOOR OPENINGS, CORRIDOR WIDTHS AND THRESHOLDS, ENTRY RAMP GRADES AND COVER ETC TO NCC REQUIREMENTS

CONSTRUCTION NEAR BOUNDARY MUST COMPLY WITH NCC REQUIREMENTS - REVISE TO SUIT LOCAL REGULATIONS AND BUILDING ENVELOPES ETC

SETBACK FROM BOUNDARIES SHOWN INDICATIVELY ONLY - REVISE TO SUIT LOCAL REGULATIONS AND BUILDING ENVELOPES ETC

NOTE: GFA CALCULATIONS DO NOT INCLUDE DECKS, TERRACES, COURTYARDS, VERANDAHS, VOIDS, STAIRS & BALCONIES @ UFL. NOTE THAT INTERNAL ROOM DIMENSIONS ARE NOMINAL ONLY.

CEILING INSULATION VALUES SPECIFIED EXTEND TO EAVES

PROJECT



Australian Government



YourHome
Australia's guide to environmentally sustainable homes



Design For Place

DISCLAIMER

This house plan is a guide only. It does not constitute legal or other professional advice. You should seek legal or other professional advice in relation to your specific circumstances before adopting any recommendation made within it e.g. advice on structural engineering or building certification requirements. The Commonwealth does not accept responsibility for the accuracy or completeness of this plan, its fitness for a particular purpose, or compliance with any regulatory requirements and standards. Further, the Commonwealth also disclaims liability, to the extent permitted by law, for any liabilities, losses, damages and costs arising from any reliance on the contents of this plan.

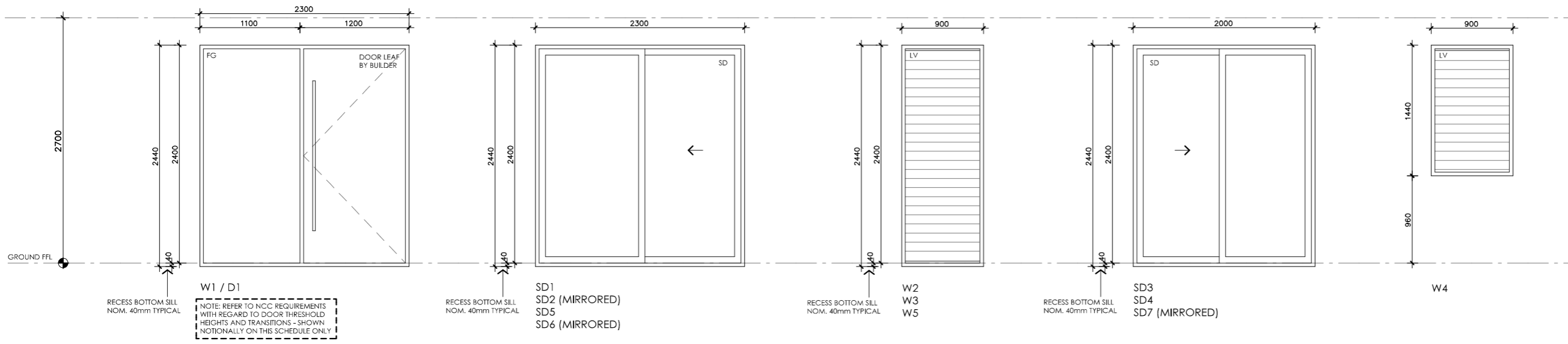
DESIGN
Acacia House

DESIGNED FOR
Darwin

Technical drawings should be read with the Acacia House Darwin 'Design Options' document which includes building specifications and rating information.

DETAILS
Drawing title: Setout Plan
Scale: 1:100
Paper size: A3
Drawing number: 9/10
Date issued: June 2023
Project stage: Preliminary





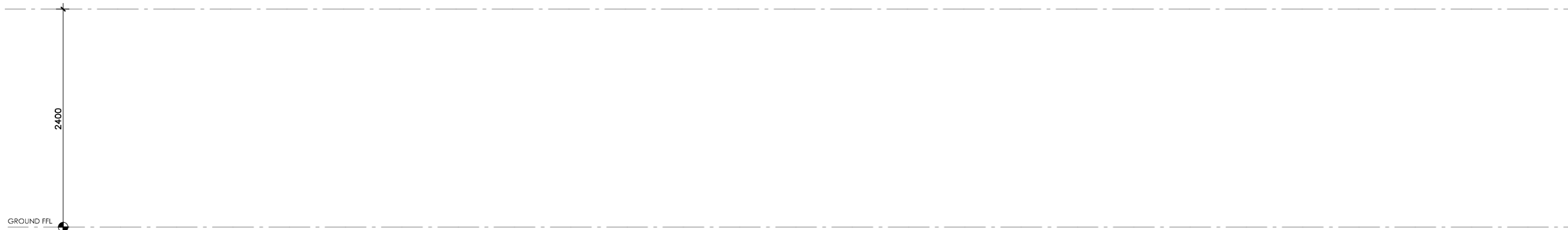
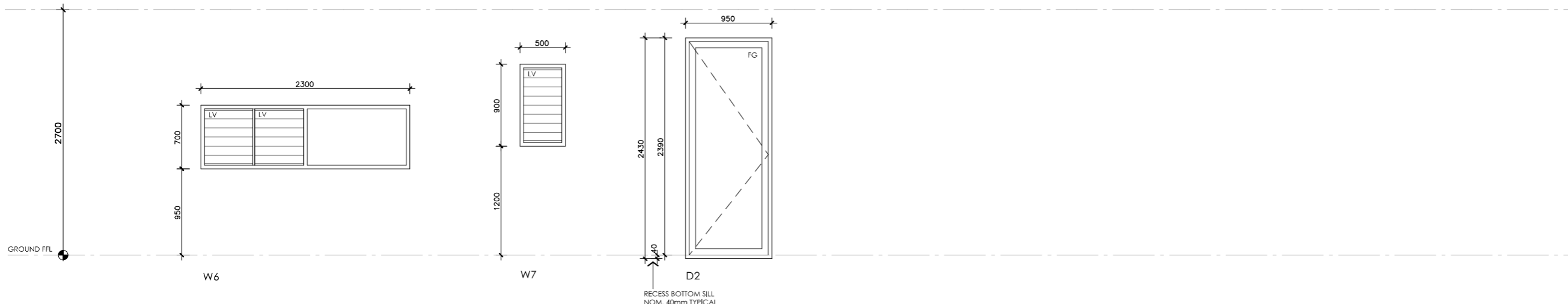
LEGEND
 FG FIXED GLASS
 LV GLASS LOUVRES
 AW AWNING SASH
 SD SLIDING DOOR
 SSD SLIDING STACKER DOOR
 SW SLIDING WINDOW

WHICH WINDOWS/DOORS REQUIRE LAMINATED SAFETY GLASS AND SPECIFY ACCORDINGLY. ALL GLAZING TO CODE REQUIREMENTS

NOTE: FRAME SECTION WIDTHS DIMENSIONED ARE NOTIONAL ONLY. FABRICATOR TO CONFIRM FRAME SECTION SIZE

NOTE: OVERALL WINDOW DIMENSIONS NOMINAL ONLY - CHECK MEASURE EXISTING OPENING ON SITE PRIOR TO ORDERING

NOTE: REFER TO ENERGY RATING CERTIFICATES FOR PERFORMANCE VALUES REQUIRED



ACACIA HOUSE

LEGEND	
FG	FIXED GLASS GLAZING TO CODE REQUIREMENTS
LV	GLASS LOUVRES GLAZING TO CODE REQUIREMENTS
AW	AWNING SASH GLAZING TO CODE REQUIREMENTS
SD	SLIDING DOOR GLAZING TO CODE REQUIREMENTS
SSD	SLIDING STACKER DOOR GLAZING TO CODE REQUIREMENTS
SW	SLIDING WINDOW GLAZING TO CODE REQUIREMENTS

PROJECT





DISCLAIMER

This house plan is a guide only. It does not constitute legal or other professional advice. You should seek legal or other professional advice in relation to your specific circumstances before adopting any recommendation made within it e.g. advice on structural engineering or building certification requirements. The Commonwealth does not accept responsibility for the accuracy or completeness of this plan, its fitness for a particular purpose, or compliance with any regulatory requirements and standards. Further, the Commonwealth also disclaims liability, to the extent permitted by law, for any liabilities, losses, damages and costs arising from any reliance on the contents of this plan.

DESIGN
Acacia House

DESIGNED FOR
Darwin

Technical drawings should be read with the Acacia House Darwin 'Design Options' document which includes building specifications and rating information.

DETAILS

Drawing title: Window and Door Schedule

Scale: 1:50

Paper size: A3

Drawing number: 10/10

Date issued: June 2023

Project stage: Preliminary