



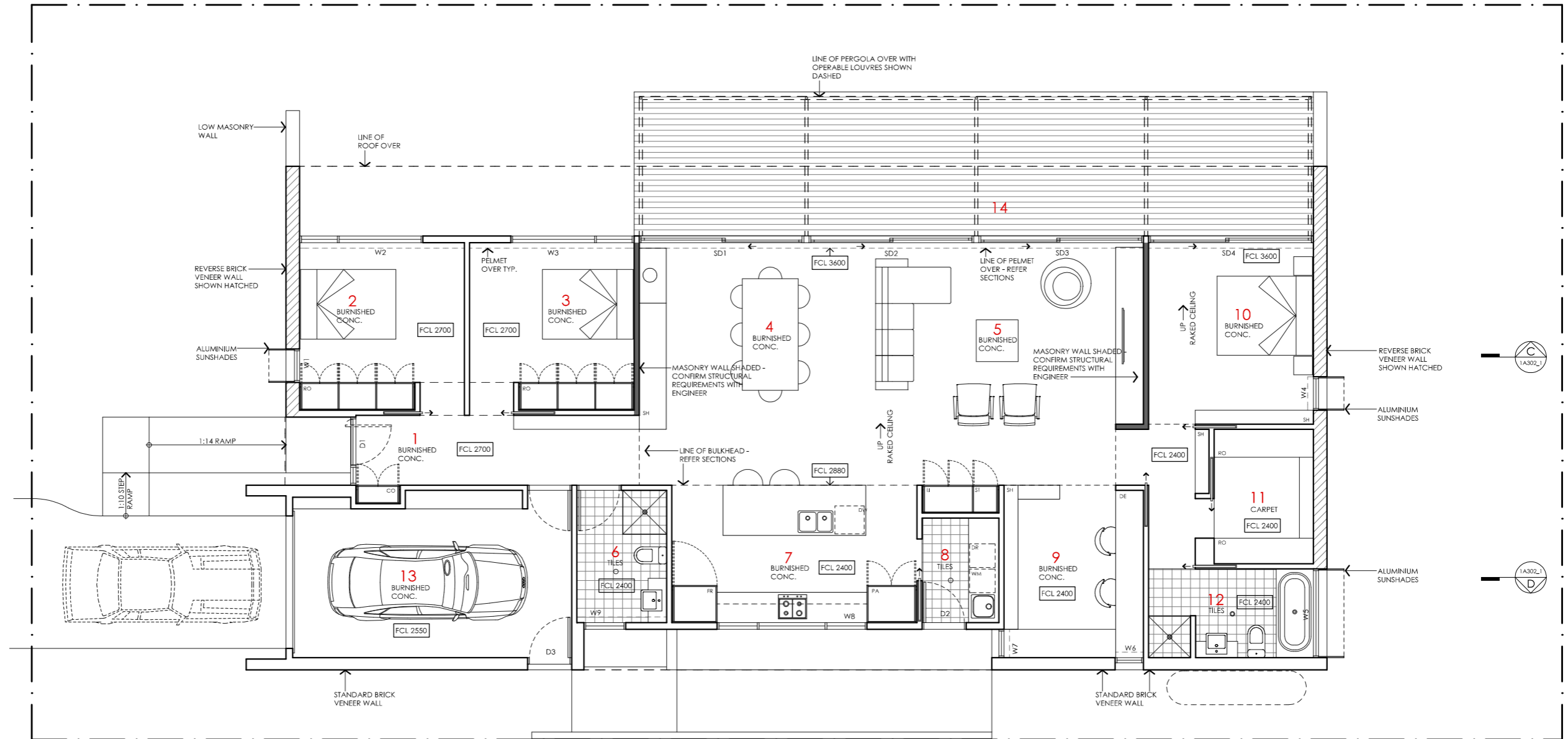


# BANKSIA HOUSE

<p><b>LEGEND</b></p> <p>N/A</p>	<p><b>PROJECT</b></p>  <p>Australian Government</p>  <p>YourHome Australia's guide to environmentally sustainable homes</p>  <p>Design For Place</p>	<p><b>DESIGN</b></p> <p><b>Banksia House</b></p>	<p><b>DETAILS</b></p> <p><b>Drawing title:</b> Site Plan</p> <p><b>Scale:</b> 1:200</p> <p><b>Paper size:</b> A3</p>
	<p><b>DISCLAIMER</b></p> <p>This house plan is a guide only. It does not constitute legal or other professional advice. You should seek legal or other professional advice in relation to your specific circumstances before adopting any recommendation made within it e.g. advice on structural engineering or building certification requirements. The Commonwealth does not accept responsibility for the accuracy or completeness of this plan, its fitness for a particular purpose, or compliance with any regulatory requirements and standards. Further, the Commonwealth also disclaims liability, to the extent permitted by law, for any liabilities, losses, damages and costs arising from any reliance on the contents of this plan.</p>	<p><b>DESIGNED FOR</b></p> <p><b>Cairns</b></p> <p>Technical drawings should be read with the Banksia House Cairns 'Design Options' document which includes building specifications and rating information.</p>	<p><b>Drawing number:</b> 1/11</p> <p><b>Date issued:</b> June 2023</p> <p><b>Project stage:</b> Preliminary</p> 



**KEY**

- 1 ENTRY
- 2 BEDROOM 3
- 3 BEDROOM 2
- 4 DINING
- 5 LIVING
- 6 BATHROOM
- 7 KITCHEN
- 8 LAUNDRY
- 9 STUDY
- 10 BEDROOM 1
- 11 WALK IN ROBE
- 12 ENSUITE
- 13 GARAGE
- 14 DECK

**LEGEND**

- FR FRIDGE
- PA PANTRY
- DW DISH WASHER
- RO ROBE
- DE DESK
- ST STORAGE CUPBOARD
- SH SHELIVING
- WM WASHING MACHINE
- DR CLOTHES DRYER
- CO COAT CUPBOARD
- LI LINEN CUPBOARD
- FCL FINISHED CEILING LEVEL

# BANKSIA HOUSE

**NOTES**

**AREA**

GROUND FLOOR LIVING	172 m <sup>2</sup>
GARAGE	22 m <sup>2</sup>
<b>TOTAL GFA</b>	<b>194 m<sup>2</sup></b>
GROUND FLOOR DECKS	30 m <sup>2</sup>
INDICATIVE BLOCK SIZE	544 m <sup>2</sup>

REFER TO NCC FOR SANITARY COMPARTMENT CIRCULATION, WALL REINFORCEMENT AND THRESHOLD/HOB REQUIREMENTS  
 DOOR OPENINGS, CORRIDOR WIDTHS AND THRESHOLDS, ENTRY RAMP GRADES AND COVER ETC TO NCC REQUIREMENTS  
 CONSTRUCTION NEAR BOUNDARY MUST COMPLY WITH NCC REQUIREMENTS - REVISE TO SUIT LOCAL REGULATIONS AND BUILDING ENVELOPES ETC  
 SETBACK FROM BOUNDARIES SHOWN INDICATIVELY ONLY - REVISE TO SUIT LOCAL REGULATIONS AND BUILDING ENVELOPES ETC  
 NOTE: GFA CALCULATIONS DO NOT INCLUDE DECKS, TERRACES, COURTYARDS, VERANDAHES, PORCHES, STAIRS & BALCONIES @ GFL. NOTE THAT INTERNAL ROOM DIMENSIONS ARE NOMINAL ONLY.  
 CEILING INSULATION VALUES SPECIFIED EXTEND TO EAVES

**PROJECT**



Australian Government



YourHome  
Australia's guide to environmentally sustainable homes



Design For Place

**DISCLAIMER**

This house plan is a guide only. It does not constitute legal or other professional advice. You should seek legal or other professional advice in relation to your specific circumstances before adopting any recommendation made within it e.g. advice on structural engineering or building certification requirements. The Commonwealth does not accept responsibility for the accuracy or completeness of this plan, its fitness for a particular purpose, or compliance with any regulatory requirements and standards. Further, the Commonwealth also disclaims liability, to the extent permitted by law, for any liabilities, losses, damages and costs arising from any reliance on the contents of this plan.


**DESIGN**  
**Banksia House**

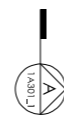
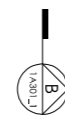
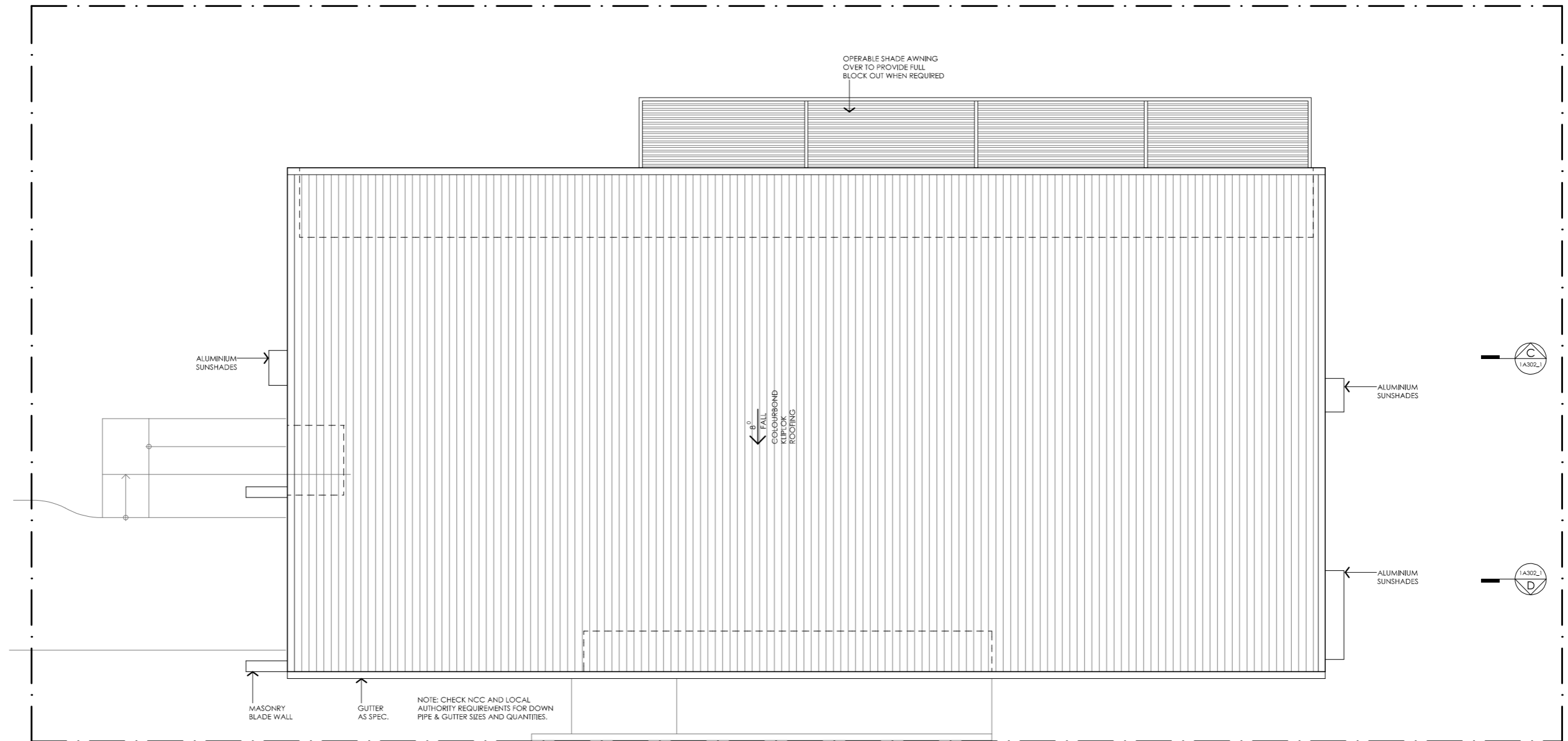
**DESIGNED FOR**  
**Cairns**

Technical drawings should be read with the Banksia House Cairns 'Design Options' document which includes building specifications and rating information.





**DETAILS**

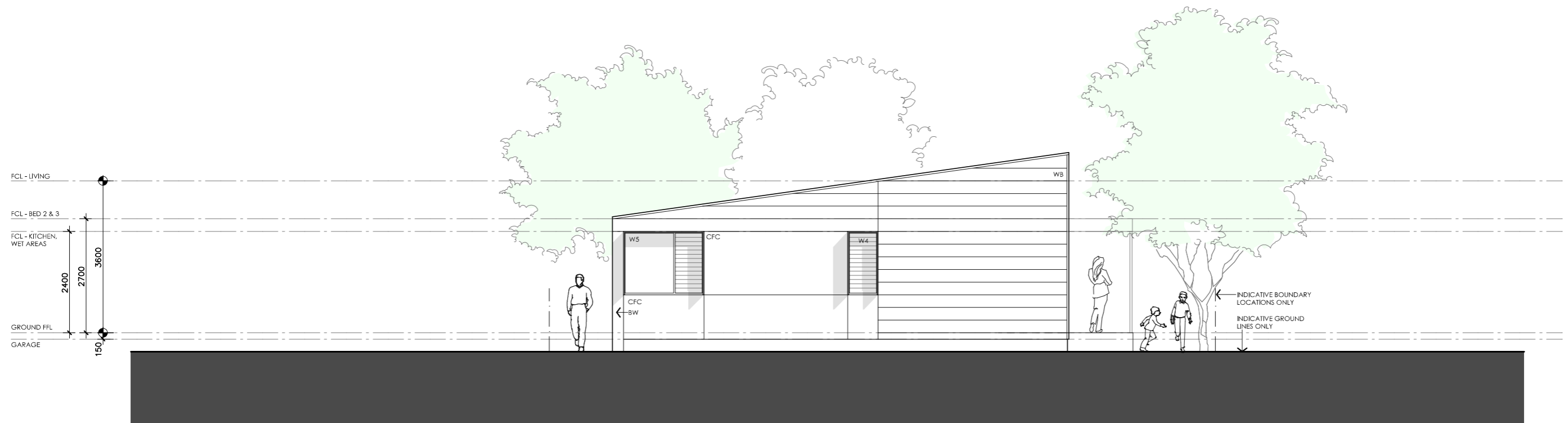
**Drawing title:** Floor Plan  
**Scale:** 1:100  
**Paper size:** A3  
**Drawing number:** 2/11  
**Date issued:** June 2023  
**Project stage:** Preliminary





# BANKSIA HOUSE




<p><b>LEGEND</b></p> <p>N/A</p>	<p><b>PROJECT</b></p>  <p>Australian Government</p>  <p>Australia's guide to environmentally sustainable homes</p>  <p>Design For Place</p>	<p><b>DESIGN</b></p> <p><b>Banksia House</b></p> <p><b>DESIGNED FOR</b></p> <p><b>Cairns</b></p> <p>Technical drawings should be read with the Banksia House Cairns 'Design Options' document which includes building specifications and rating information.</p>	<p><b>DETAILS</b></p> <p><b>Drawing title:</b> Roof Plan</p> <p><b>Scale:</b> 1:100</p> <p><b>Paper size:</b> A3</p> <p><b>Drawing number:</b> 3/11</p> <p><b>Date issued:</b> June 2023</p> <p><b>Project stage:</b> Preliminary</p>
<p><b>DISCLAIMER</b></p> <p>This house plan is a guide only. It does not constitute legal or other professional advice. You should seek legal or other professional advice in relation to your specific circumstances before adopting any recommendation made within it e.g. advice on structural engineering or building certification requirements. The Commonwealth does not accept responsibility for the accuracy or completeness of this plan, its fitness for a particular purpose, or compliance with any regulatory requirements and standards. Further, the Commonwealth also disclaims liability, to the extent permitted by law, for any liabilities, losses, damages and costs arising from any reliance on the contents of this plan.</p>			

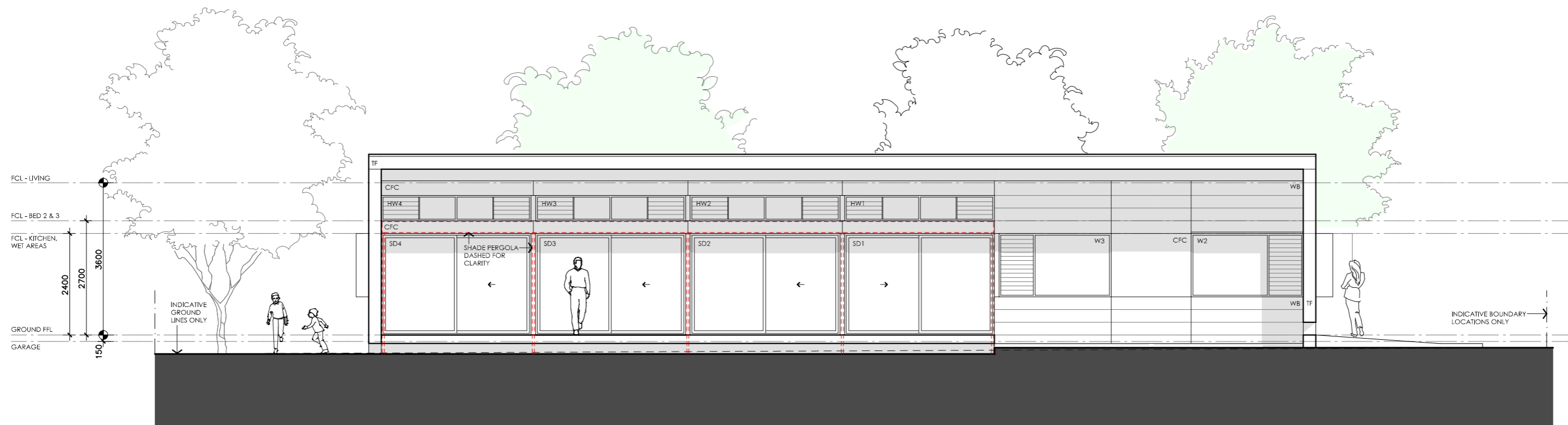


02 EAST ELEVATION

1:100

# BANKSIA HOUSE

<p><b>LEGEND</b></p> <p>TF TIMBER FASCIA PROFILE/COLOUR AS SPEC</p> <p>WB WEATHERBOARD LINING ON TIMBER FRAMING &amp; BATTENS PROFILE/COLOUR AS SPEC</p> <p>BW FACE BRICK WORK BRICK AS SPEC</p> <p>CFC COMPRESSED FC CLADDING ON TIMBER FRAMING &amp; BATTENS PROFILE/COLOUR AS SPEC</p> <p>SB STEEL BEAM PAINT FINISH AS SPEC.</p> <p>GD GARAGE DOOR MAKE &amp; COLOUR AS SPEC</p> <p>AL ALUMINIUM COVER PANEL - FOLDED FINISH/COLOUR TO MATCH WINDOW FRAMES</p>	<p><b>PROJECT</b></p>  <p>Australian Government</p>  <p>YourHome Australia's guide to environmentally sustainable homes</p>  <p>Design For Place</p> <p><b>DISCLAIMER</b></p> <p>This house plan is a guide only. It does not constitute legal or other professional advice. You should seek legal or other professional advice in relation to your specific circumstances before adopting any recommendation made within it e.g. advice on structural engineering or building certification requirements. The Commonwealth does not accept responsibility for the accuracy or completeness of this plan, its fitness for a particular purpose, or compliance with any regulatory requirements and standards. Further, the Commonwealth also disclaims liability, to the extent permitted by law, for any liabilities, losses, damages and costs arising from any reliance on the contents of this plan.</p>	<p><b>DESIGN</b></p> <p><b>Banksia House</b></p> <p><b>DESIGNED FOR</b></p> <p><b>Cairns</b></p> <p>Technical drawings should be read with the Banksia House Cairns 'Design Options' document which includes building specifications and rating information.</p>	<p><b>DETAILS</b></p> <p><b>Drawing title:</b> Elevation - East</p> <p><b>Scale:</b> 1:100</p> <p><b>Paper size:</b> A3</p> <p><b>Drawing number:</b> 4/11</p> <p><b>Date issued:</b> June 2023</p> <p><b>Project stage:</b> Preliminary</p>
--	---	--	--



01 NORTH ELEVATION

1A201\_1 1:100

# BANKSIA HOUSE

LEGEND	
TF	TIMBER FASCIA PROFILE/COLOUR AS SPEC
WB	WEATHERBOARD LINING ON TIMBER FRAMING & BATTENS PROFILE/COLOUR AS SPEC
BW	FACE BRICK WORK BRICK AS SPEC
CFC	COMPRESSED FC CLADDING ON TIMBER FRAMING & BATTENS PROFILE/COLOUR AS SPEC
SB	STEEL BEAM PAINT FINISH AS SPEC.
GD	GARAGE DOOR MAKE & COLOUR AS SPEC
AL	ALUMINIUM COVER PANEL - FOLDED FINISH/COLOUR TO MATCH WINDOW FRAMES

**PROJECT**



Australian Government



YourHome  
Australia's guide to environmentally sustainable homes



Design For Place

**DISCLAIMER**

This house plan is a guide only. It does not constitute legal or other professional advice. You should seek legal or other professional advice in relation to your specific circumstances before adopting any recommendation made within it e.g. advice on structural engineering or building certification requirements. The Commonwealth does not accept responsibility for the accuracy or completeness of this plan, its fitness for a particular purpose, or compliance with any regulatory requirements and standards. Further, the Commonwealth also disclaims liability, to the extent permitted by law, for any liabilities, losses, damages and costs arising from any reliance on the contents of this plan.

**DESIGN**  
Banksia House

**DESIGNED FOR**  
Cairns

Technical drawings should be read with the Banksia House Cairns 'Design Options' document which includes building specifications and rating information.

**DETAILS**  
**Drawing title:** Elevation - North  
**Scale:** 1:100  
**Paper size:** A3  
**Drawing number:** 5/11  
**Date issued:** June 2023  
**Project stage:** Preliminary



## 01 | SOUTH ELEVATION

1A202\_1 | 1:100

# BANKSIA HOUSE

### LEGEND

TF	TIMBER FASCIA PROFILE/COLOUR AS SPEC
WB	WEATHERBOARD LINING ON TIMBER FRAMING & BATTENS PROFILE/COLOUR AS SPEC
BW	FACE BRICK WORK BRICK AS SPEC
CFC	COMPRESSED FC CLADDING ON TIMBER FRAMING & BATTENS PROFILE/COLOUR AS SPEC
SB	STEEL BEAM PAINT FINISH AS SPEC.
GD	GARAGE DOOR MAKE & COLOUR AS SPEC
AL	ALUMINIUM COVER PANEL - FOLDED FINISH/COLOUR TO MATCH WINDOW FRAMES

### PROJECT



Australian Government



Design For Place

### DISCLAIMER

This house plan is a guide only. It does not constitute legal or other professional advice. You should seek legal or other professional advice in relation to your specific circumstances before adopting any recommendation made within it e.g. advice on structural engineering or building certification requirements. The Commonwealth does not accept responsibility for the accuracy or completeness of this plan, its fitness for a particular purpose, or compliance with any regulatory requirements and standards. Further, the Commonwealth also disclaims liability, to the extent permitted by law, for any liabilities, losses, damages and costs arising from any reliance on the contents of this plan.

### DESIGN

**Banksia House**

**DESIGNED FOR  
Cairns**

Technical drawings should be read with the Banksia House Cairns 'Design Options' document which includes building specifications and rating information.

### DETAILS

**Drawing title:** Elevation - South

**Scale:** 1:100

**Paper size:** A3

**Drawing number:** 6/11

**Date issued:** June 2023

**Project stage:** Preliminary



02 WEST ELEVATION

1:100

# BANKSIA HOUSE

LEGEND	
TF	TIMBER FASCIA PROFILE/COLOUR AS SPEC
WB	WEATHERBOARD LINING ON TIMBER FRAMING & BATTENS PROFILE/COLOUR AS SPEC
BW	FACE BRICK WORK BRICK AS SPEC
CFC	COMPRESSED FC CLADDING ON TIMBER FRAMING & BATTENS PROFILE/COLOUR AS SPEC
SB	STEEL BEAM PAINT FINISH AS SPEC.
GD	GARAGE DOOR MAKE & COLOUR AS SPEC
AL	ALUMINIUM COVER PANEL - FOLDED FINISH/COLOUR TO MATCH WINDOW FRAMES

**PROJECT**



Australian Government



YourHome  
Australia's guide to environmentally sustainable homes



Design For Place

**DISCLAIMER**

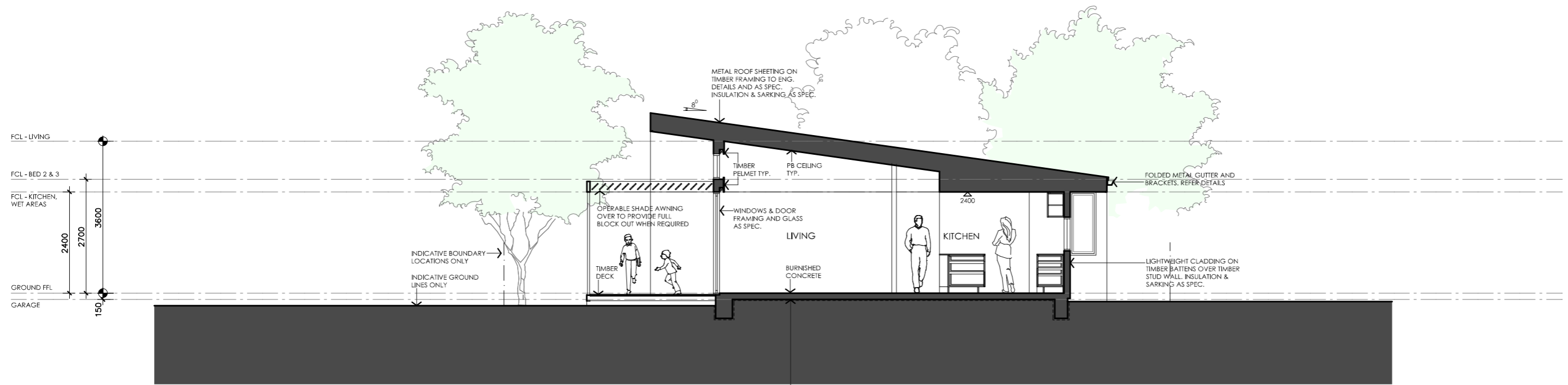
This house plan is a guide only. It does not constitute legal or other professional advice. You should seek legal or other professional advice in relation to your specific circumstances before adopting any recommendation made within it e.g. advice on structural engineering or building certification requirements. The Commonwealth does not accept responsibility for the accuracy or completeness of this plan, its fitness for a particular purpose, or compliance with any regulatory requirements and standards. Further, the Commonwealth also disclaims liability, to the extent permitted by law, for any liabilities, losses, damages and costs arising from any reliance on the contents of this plan.

**DESIGN**  
Banksia House

**DESIGNED FOR**  
Cairns

Technical drawings should be read with the Banksia House Cairns 'Design Options' document which includes building specifications and rating information.

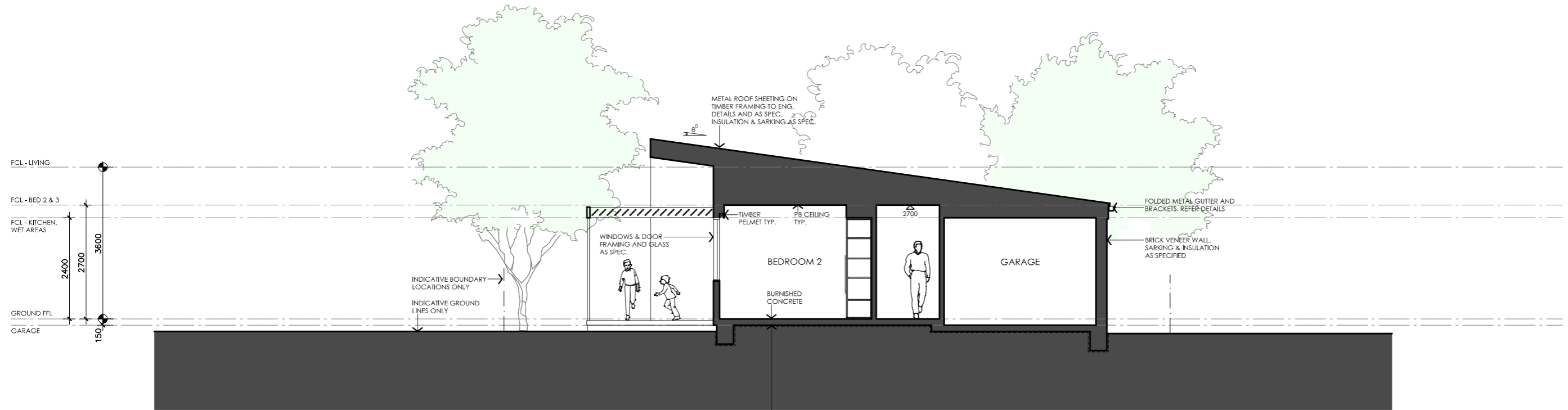
**DETAILS**  
**Drawing title:** Elevation - West  
**Scale:** 1:100  
**Paper size:** A3  
**Drawing number:** 7/11  
**Date issued:** June 2023  
**Project stage:** Preliminary



01 SECTION AA

1A301\_1 1:100

CONCRETE SLAB ON SUB STRUCTURE AND FOOTINGS TO STRUCTURAL ENGINEERS DETAILS. WP MEMBRANE AND COMPACTED SAND UNDER TO BCA. PROVIDE INSULATION UNDER SLAB AS SCHEDULED TO NCC REQUIREMENTS.



02 SECTION BB

1:100

CONCRETE SLAB ON SUB STRUCTURE AND FOOTINGS TO STRUCTURAL ENGINEERS DETAILS. WP MEMBRANE AND COMPACTED SAND UNDER TO BCA. PROVIDE INSULATION UNDER SLAB AS SCHEDULED TO NCC REQUIREMENTS.

# BANKSIA HOUSE

LEGEND	
TF	TIMBER FASCIA PROFILE/COLOUR AS SPEC
WB	WEATHERBOARD LINING ON TIMBER FRAMING & BATTENS PROFILE/COLOUR AS SPEC
BW	FACE BRICK WORK BRICK AS SPEC
CFC	COMPRESSED FC CLADDING ON TIMBER FRAMING & BATTENS PROFILE/COLOUR AS SPEC
SB	STEEL BEAM PAINT FINISH AS SPEC.
GD	GARAGE DOOR MAKE & COLOUR AS SPEC
AL	ALUMINIUM COVER PANEL - FOLDED FINISH/COLOUR TO MATCH WINDOW FRAMES

## PROJECT



## DISCLAIMER

This house plan is a guide only. It does not constitute legal or other professional advice. You should seek legal or other professional advice in relation to your specific circumstances before adopting any recommendation made within it e.g. advice on structural engineering or building certification requirements. The Commonwealth does not accept responsibility for the accuracy or completeness of this plan, its fitness for a particular purpose, or compliance with any regulatory requirements and standards. Further, the Commonwealth also disclaims liability, to the extent permitted by law, for any liabilities, losses, damages and costs arising from any reliance on the contents of this plan.

## DESIGN

**Banksia House**

**DESIGNED FOR  
Cairns**

Technical drawings should be read with the Banksia House Cairns 'Design Options' document which includes building specifications and rating information.

## DETAILS

**Drawing title:** Section

**Scale:** 1:100

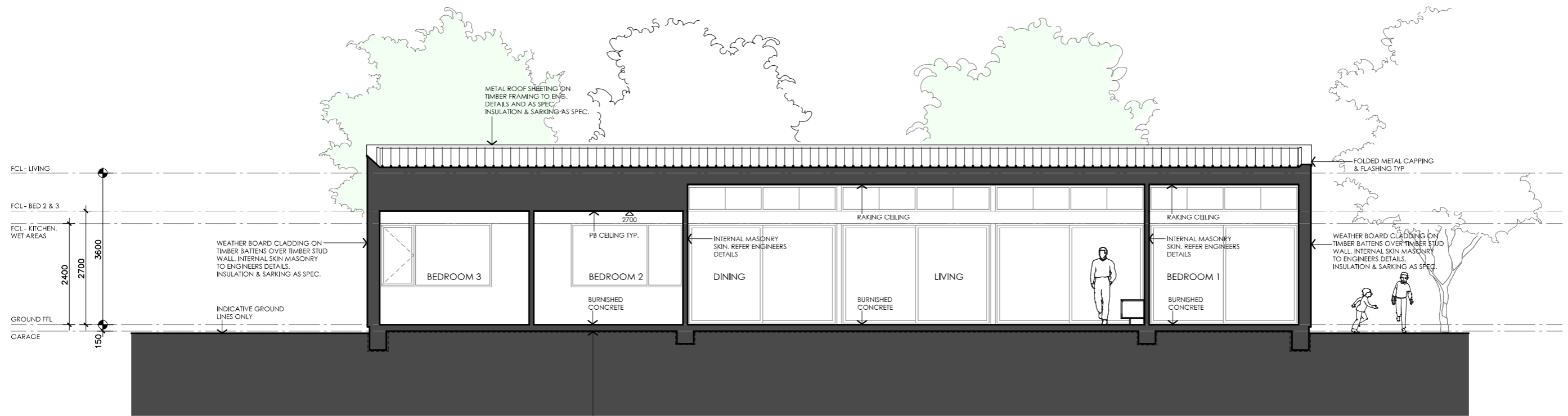
**Paper size:** A3

**Drawing number:** 8/11

**Date issued:** June 2023

**Project stage:** Preliminary

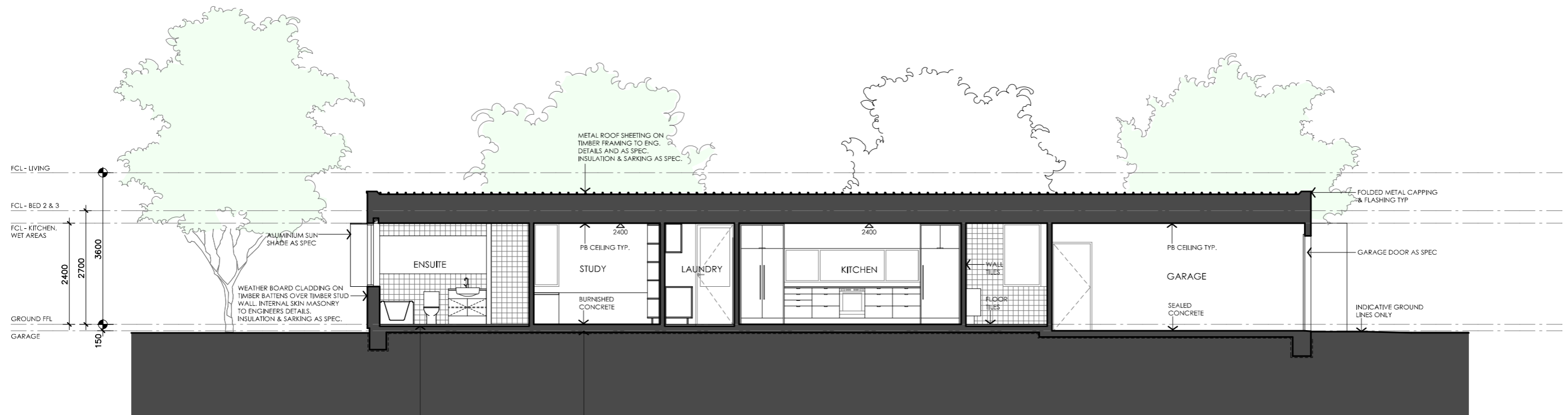




01 SECTION CC

1A302\_1 1:100

CONCRETE SLAB ON SUB STRUCTURE AND FOOTINGS TO STRUCTURAL ENGINEERS DETAILS. WP MEMBRANE AND COMPACTED SAND UNDER TO BCA. PROVIDE INSULATION UNDER SLAB AS SCHEDULED TO NCC REQUIREMENTS.



02 SECTION DD

1:100

SETDOWN TO SLAB IN WET AREAS FOR FALLS TYPICAL

CONCRETE SLAB ON SUB STRUCTURE AND FOOTINGS TO STRUCTURAL ENGINEERS DETAILS. WP MEMBRANE AND COMPACTED SAND UNDER TO BCA. PROVIDE INSULATION UNDER SLAB AS SCHEDULED TO NCC REQUIREMENTS.

# BANKSIA HOUSE

**LEGEND**

- TF TIMBER FASCIA PROFILE/COLOUR AS SPEC
- WB WEATHERBOARD LINING ON TIMBER FRAMING & BATTENS PROFILE/COLOUR AS SPEC
- BW FACE BRICK WORK BRICK AS SPEC
- CFC COMPRESSED FC CLADDING ON TIMBER FRAMING & BATTENS PROFILE/COLOUR AS SPEC
- SB STEEL BEAM PAINT FINISH AS SPEC.
- GD GARAGE DOOR MAKE & COLOUR AS SPEC
- AL ALUMINIUM COVER PANEL - FOLDED FINISH/COLOUR TO MATCH WINDOW FRAMES

**PROJECT**



**DISCLAIMER**

This house plan is a guide only. It does not constitute legal or other professional advice. You should seek legal or other professional advice in relation to your specific circumstances before adopting any recommendation made within it e.g. advice on structural engineering or building certification requirements. The Commonwealth does not accept responsibility for the accuracy or completeness of this plan, its fitness for a particular purpose, or compliance with any regulatory requirements and standards. Further, the Commonwealth also disclaims liability, to the extent permitted by law, for any liabilities, losses, damages and costs arising from any reliance on the contents of this plan.

**DESIGN**

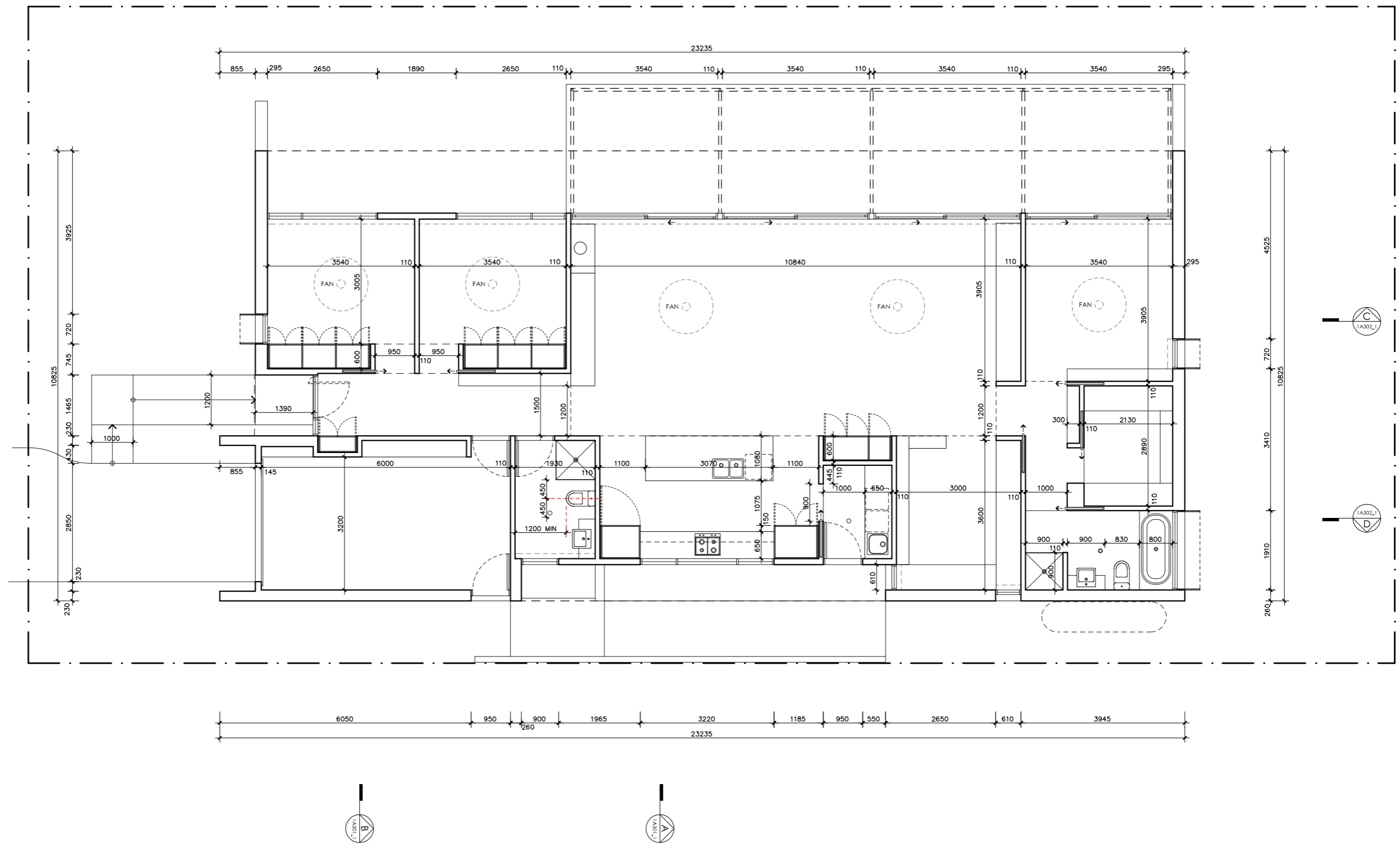
**Banksia House**

**DESIGNED FOR Cairns**

Technical drawings should be read with the Banksia House Cairns 'Design Options' document which includes building specifications and rating information.

**DETAILS**

- Drawing title:** Section
- Scale:** 1:100
- Paper size:** A3
- Drawing number:** 9/11
- Date issued:** June 2023
- Project stage:** Preliminary



# BANKSIA HOUSE

## LEGEND

N/A

## PROJECT



## DESIGN

**Banksia House**

**DESIGNED FOR  
Cairns**

Technical drawings should be read with the Banksia House Cairns 'Design Options' document which includes building specifications and rating information.

## DETAILS

**Drawing title:** Setout Plan

**Scale:** 1:100

**Paper size:** A3

**Drawing number:** 10/11

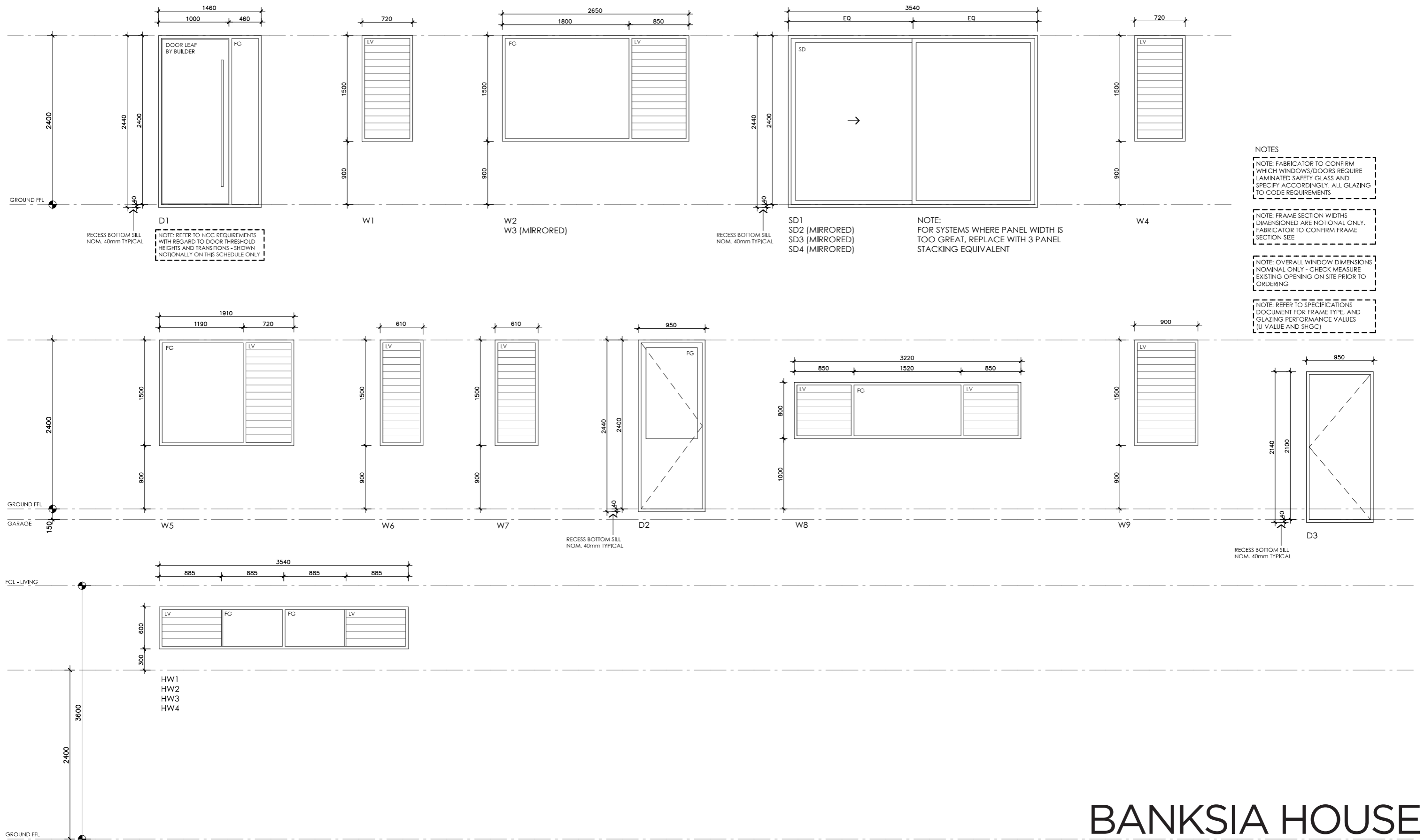
**Date issued:** June 2023

**Project stage:** Preliminary




## DISCLAIMER

This house plan is a guide only. It does not constitute legal or other professional advice. You should seek legal or other professional advice in relation to your specific circumstances before adopting any recommendation made within it e.g. advice on structural engineering or building certification requirements. The Commonwealth does not accept responsibility for the accuracy or completeness of this plan, its fitness for a particular purpose, or compliance with any regulatory requirements and standards. Further, the Commonwealth also disclaims liability, to the extent permitted by law, for any liabilities, losses, damages and costs arising from any reliance on the contents of this plan.





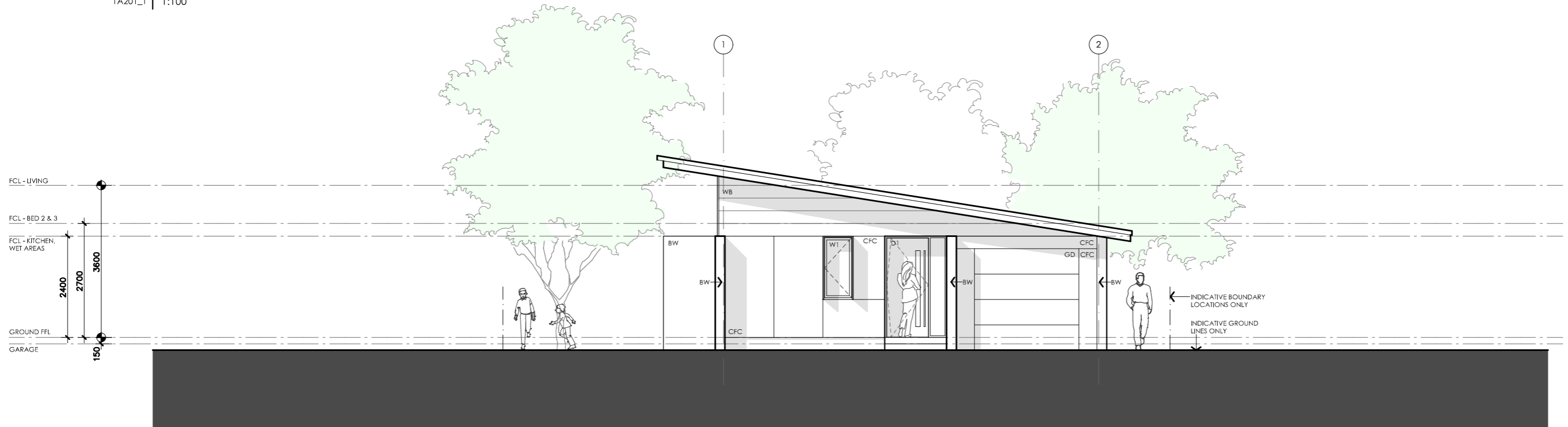
# BANKSIA HOUSE

<p><b>LEGEND</b></p> <ul style="list-style-type: none"> <li>FG FIXED GLASS GLAZING TO CODE REQUIREMENTS</li> <li>LV GLASS LOUVRES GLAZING TO CODE REQUIREMENTS</li> <li>AW AWNING SASH GLAZING TO CODE REQUIREMENTS</li> <li>SD SLIDING DOOR GLAZING TO CODE REQUIREMENTS</li> <li>SSD SLIDING STACKER DOOR GLAZING TO CODE REQUIREMENTS</li> <li>SW SLIDING WINDOW GLAZING TO CODE REQUIREMENTS</li> </ul>	<p><b>PROJECT</b></p>  <p>Australian Government</p>  <p>YourHome Australia's guide to environmentally sustainable homes</p>  <p>Design For Place</p> <p><b>DISCLAIMER</b></p> <p>This house plan is a guide only. It does not constitute legal or other professional advice. You should seek legal or other professional advice in relation to your specific circumstances before adopting any recommendation made within it e.g. advice on structural engineering or building certification requirements. The Commonwealth does not accept responsibility for the accuracy or completeness of this plan, its fitness for a particular purpose, or compliance with any regulatory requirements and standards. Further, the Commonwealth also disclaims liability, to the extent permitted by law, for any liabilities, losses, damages and costs arising from any reliance on the contents of this plan.</p>	<p><b>DESIGN</b></p> <p><b>Banksia House</b></p> <p><b>DESIGNED FOR</b></p> <p><b>Cairns</b></p> <p>Technical drawings should be read with the Banksia House Cairns 'Design Options' document which includes building specifications and rating information.</p>	<p><b>DETAILS</b></p> <p><b>Drawing title:</b> Window and Door Schedule</p> <p><b>Scale:</b> 1:50</p> <p><b>Paper size:</b> A3</p> <p><b>Drawing number:</b> 11/11</p> <p><b>Date issued:</b> June 2023</p> <p><b>Project stage:</b> Preliminary</p>
---	---	--	--



01 NORTH ELEVATION

1A201\_1 1:100






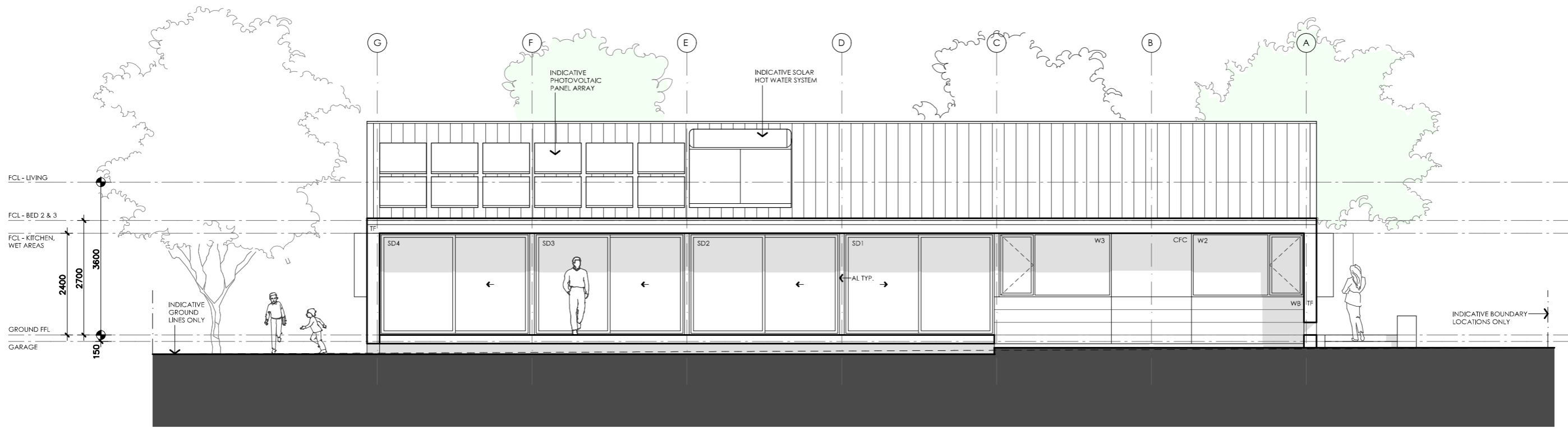
02 WEST ELEVATION

1A201\_1 1:100

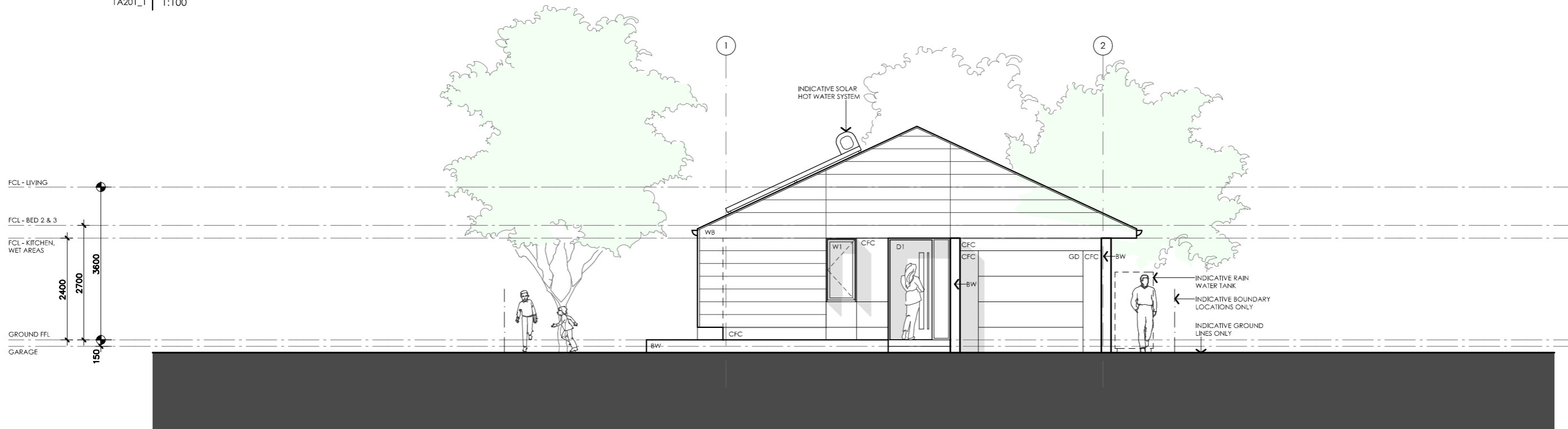
**IMPORTANT:** This is an alternative concept design for reference only. This design has not been updated to comply with the NCC 2022 accessibility or energy efficiency requirements and does not have associated estimated NatHERS ratings.

# BANKSIA HOUSE

<p><b>LEGEND</b></p> <ul style="list-style-type: none"> <li>TF TIMBER FASCIA PROFILE/COLOUR AS SPEC</li> <li>WB WEATHERBOARD LINING ON TIMBER FRAMING &amp; BATTENS PROFILE/COLOUR AS SPEC</li> <li>BW FACE BRICK WORK BRICK AS SPEC</li> <li>CFC COMPRESSED FC CLADDING ON TIMBER FRAMING &amp; BATTENS PROFILE/COLOUR AS SPEC</li> <li>SB STEEL BEAM PAINT FINISH AS SPEC.</li> <li>GD GARAGE DOOR MAKE &amp; COLOUR AS SPEC</li> <li>AL ALUMINIUM COVER PANEL - FOLDED FINISH/COLOUR TO MATCH WINDOW FRAMES</li> </ul>	<p><b>PROJECT</b></p>  <p>Australian Government</p>  <p>YourHome Australia's guide to environmentally sustainable homes</p>  <p>Design For Place</p>	<p><b>DISCLAIMER</b></p> <p>This house plan is a guide only. It does not constitute legal or other professional advice. You should seek legal or other professional advice in relation to your specific circumstances before adopting any recommendation made within it e.g. advice on structural engineering or building certification requirements. The Commonwealth does not accept responsibility for the accuracy or completeness of this plan, its fitness for a particular purpose, or compliance with any regulatory requirements and standards. Further, the Commonwealth also disclaims liability, to the extent permitted by law, for any liabilities, losses, damages and costs arising from any reliance on the contents of this plan.</p>	<p><b>DESIGN</b> Banksia House</p> <p><b>DESIGNED FOR</b> Cairns</p> <p>Technical drawings should be read with the Banksia House Cairns 'Design Options' document which includes building specifications and rating information.</p>	<p><b>DETAILS</b></p> <p><b>Drawing title:</b> Elevations – alt. roof line</p> <p><b>Scale:</b> 1:100</p> <p><b>Paper size:</b> A3</p> <p><b>Drawing number:</b> 1a/4</p> <p><b>Date issued:</b> March 2020</p> <p><b>Project stage:</b> Preliminary</p>
---	---	---	--	--






01 | NORTH ELEVATION  
1A201\_1 | 1:100

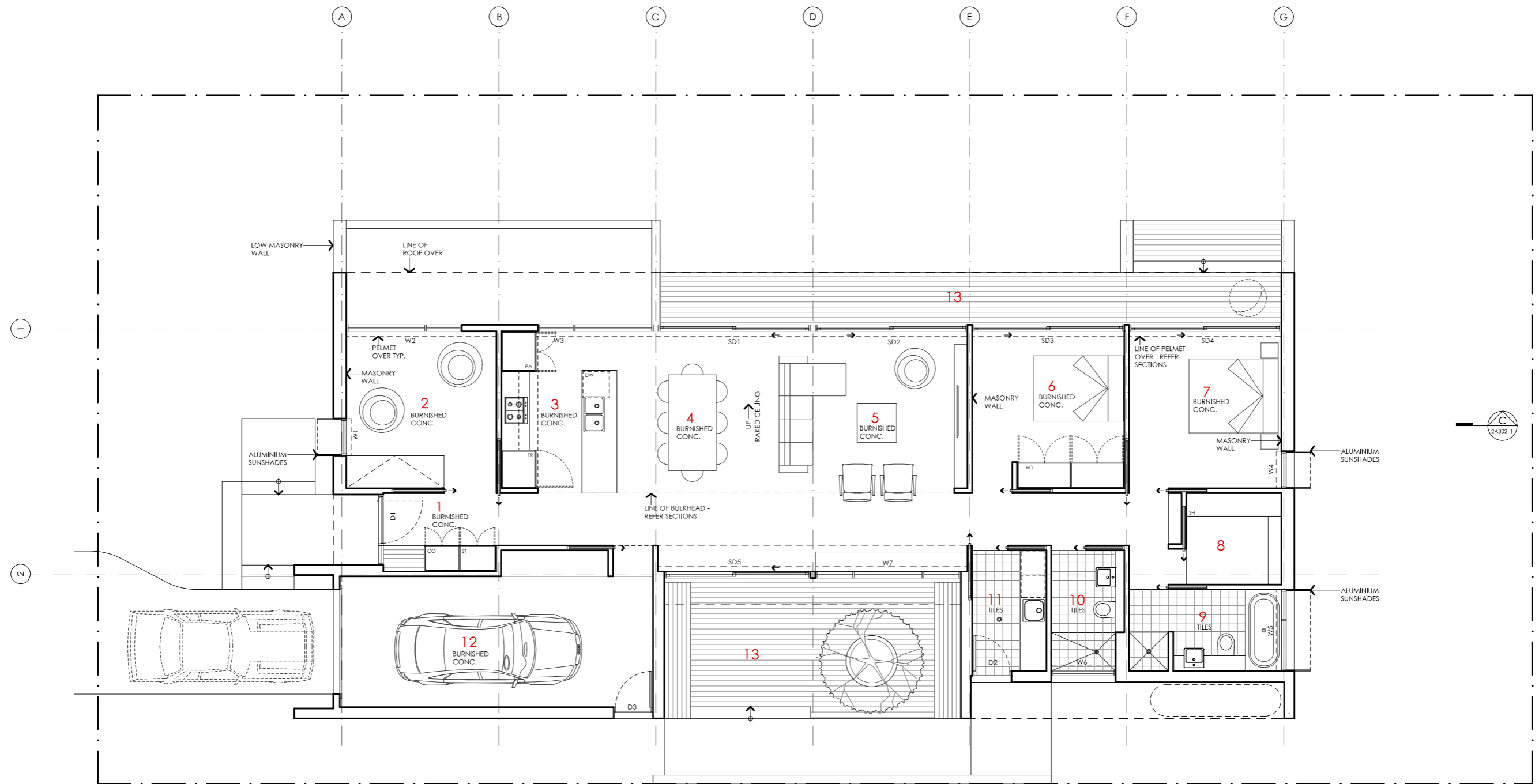


02 | WEST ELEVATION  
1A201\_1 | 1:100

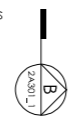
**IMPORTANT:** This is an alternative concept design for reference only. This design has not been updated to comply with the NCC 2022 accessibility or energy efficiency requirements and does not have associated estimated NatHERS ratings.

# BANKSIA HOUSE

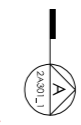
<p><b>LEGEND</b></p> <ul style="list-style-type: none"> <li>TF TIMBER FASCIA PROFILE/COLOUR AS SPEC</li> <li>WB WEATHERBOARD LINING ON TIMBER FRAMING &amp; BATTENS PROFILE/COLOUR AS SPEC</li> <li>BW FACE BRICK WORK BRICK AS SPEC</li> <li>CFC COMPRESSED FC CLADDING ON TIMBER FRAMING &amp; BATTENS PROFILE/COLOUR AS SPEC</li> <li>SB STEEL BEAM PAINT FINISH AS SPEC.</li> <li>GD GARAGE DOOR MAKE &amp; COLOUR AS SPEC</li> <li>AL ALUMINIUM COVER PANEL - FOLDED FINISH/COLOUR TO MATCH WINDOW FRAMES</li> </ul>	<p><b>PROJECT</b></p>  <p>Australian Government</p>  <p>YourHome Australia's guide to environmentally sustainable homes</p>  <p>Design For Place</p>	<p><b>DISCLAIMER</b></p> <p>This house plan is a guide only. It does not constitute legal or other professional advice. You should seek legal or other professional advice in relation to your specific circumstances before adopting any recommendation made within it e.g. advice on structural engineering or building certification requirements. The Commonwealth does not accept responsibility for the accuracy or completeness of this plan, its fitness for a particular purpose, or compliance with any regulatory requirements and standards. Further, the Commonwealth also disclaims liability, to the extent permitted by law, for any liabilities, losses, damages and costs arising from any reliance on the contents of this plan.</p>	<p><b>DESIGN</b> Banksia House</p> <p><b>DESIGNED FOR</b> Cairns</p> <p>Technical drawings should be read with the Banksia House Cairns 'Design Options' document which includes building specifications and rating information.</p>	<p><b>DETAILS</b></p> <p><b>Drawing title:</b> Elevations – alt. roof line</p> <p><b>Scale:</b> 1:100</p> <p><b>Paper size:</b> A3</p> <p><b>Drawing number:</b> 2a/4</p> <p><b>Date issued:</b> March 2020</p> <p><b>Project stage:</b> Preliminary</p>
---	---	---	--	--



KEY		AREA	
1	ENTRY	GROUND FLOOR LIVING	141 m <sup>2</sup>
2	STUDY / BEDROOM 3	GARAGE	28 m <sup>2</sup>
3	KITCHEN	<b>TOTAL GFA</b>	<b>169 m<sup>2</sup></b>
4	DINING	GROUND FLOOR DECKS	35 m <sup>2</sup>
5	LIVING	INDICATIVE BLOCK SIZE	544 m <sup>2</sup>
6	BEDROOM 2	NOTE: GFA CALCULATIONS DO NOT INCLUDE DECKS, CARPORTS, COURTYARDS, VERANDAH'S OR NB WALLS	
7	BEDROOM 1		
8	ROBE		
9	ENSUITE		
10	BATHROOM		
11	LAUNDRY		
12	GARAGE		
13	DECK		



**IMPORTANT:** This is an alternative concept design for reference only. This design has not been updated to comply with the NCC 2022 accessibility or energy efficiency requirements and does not have associated estimated NatHERS ratings.



# BANKSIA HOUSE

**LEGEND**  
N/A

**PROJECT**

**Australian Government**

**DISCLAIMER**  
This house plan is a guide only. It does not constitute legal or other professional advice. You should seek legal or other professional advice in relation to your specific circumstances before adopting any recommendation made within it e.g. advice on structural engineering or building certification requirements. The Commonwealth does not accept responsibility for the accuracy or completeness of this plan, its fitness for a particular purpose, or compliance with any regulatory requirements and standards. Further, the Commonwealth also disclaims liability, to the extent permitted by law, for any liabilities, losses, damages and costs arising from any reliance on the contents of this plan.

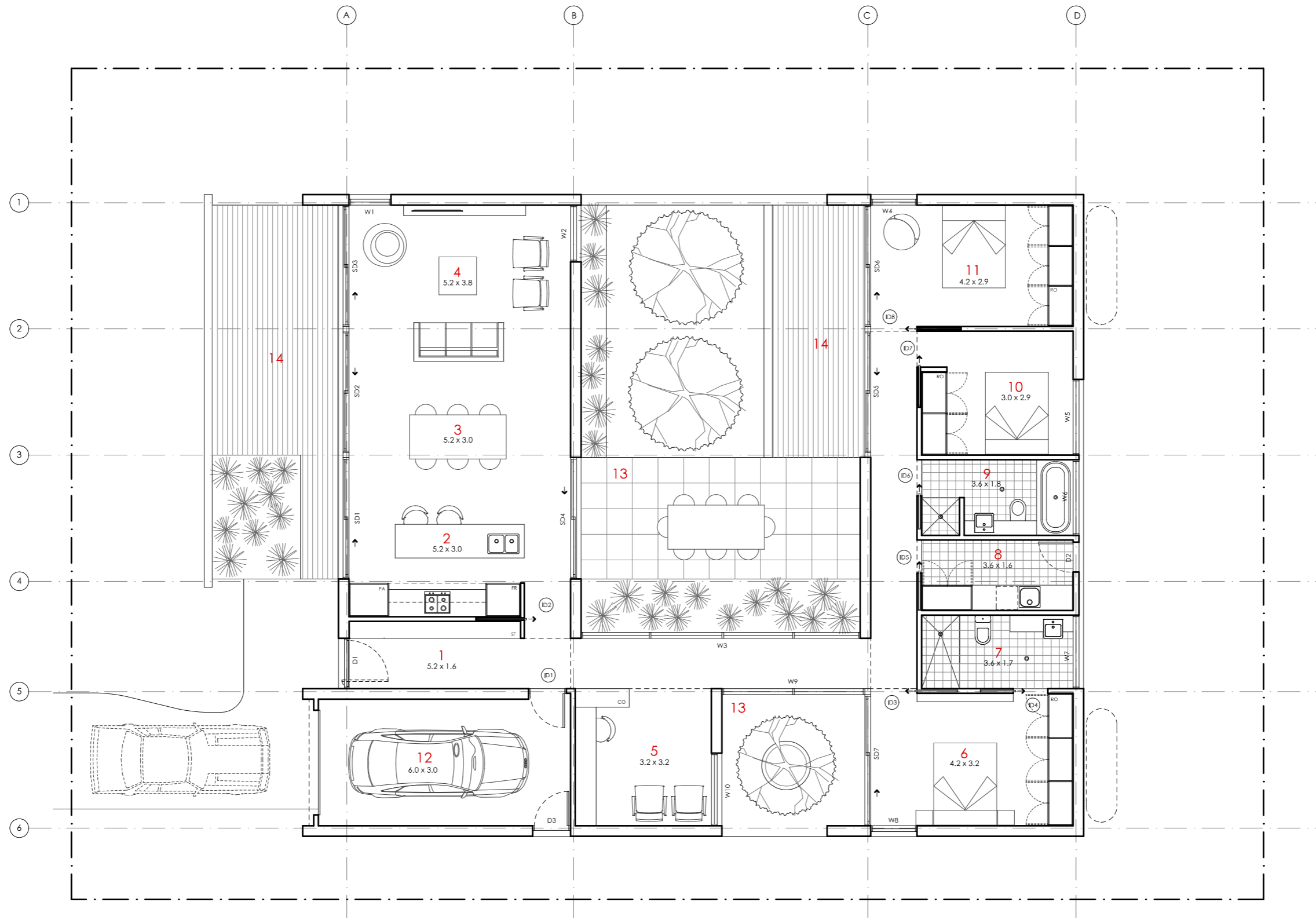
**YourHome**  
Australia's guide to environmentally sustainable homes

**DESIGN**  
**Banksia House**

**DESIGNED FOR**  
**Cairns**

Technical drawings should be read with the Banksia House Cairns 'Design Options' document which includes building specifications and rating information.

**DETAILS**  
**Drawing title:** Alt Floor Plan - 2 Bedroom  
**Scale:** 1:100  
**Paper size:** A3  
**Drawing number:** 3a/4  
**Date issued:** March 2020  
**Project stage:** Preliminary



- KEY**
- 1 ENTRY
  - 2 KITCHEN
  - 3 DINING
  - 4 LIVING
  - 5 STUDY
  - 6 BEDROOM 1
  - 7 ENSUITE
  - 8 LAUNDRY
  - 9 BATHROOM
  - 10 BEDROOM 2
  - 11 BEDROOM 3
  - 12 GARAGE
  - 13 COURTYARD
  - 14 DECK

**AREA**





GROUND FLOOR LIVING 167 m<sup>2</sup>  
 GARAGE 22 m<sup>2</sup>  
**TOTAL GFA 189 m<sup>2</sup>**  
 GROUND FLOOR DECKS 25 m<sup>2</sup>

INDICATIVE BLOCK SIZE 560 m<sup>2</sup>

NOTE: GFA CALCULATIONS DO NOT INCLUDE DECKS, CARPORTS, COURTYARDS, VERANDAHs

**IMPORTANT:** This is an alternative concept design for reference only. This design has not been updated to comply with the NCC 2022 accessibility or energy efficiency requirements and does not have associated estimated NatHERS ratings.

# BANKSIA HOUSE

<p><b>LEGEND</b></p> <p>N/A</p>	<p><b>PROJECT</b></p>    <p><b>DISCLAIMER</b></p> <p>This house plan is a guide only. It does not constitute legal or other professional advice. You should seek legal or other professional advice in relation to your specific circumstances before adopting any recommendation made within it e.g. advice on structural engineering or building certification requirements. The Commonwealth does not accept responsibility for the accuracy or completeness of this plan, its fitness for a particular purpose, or compliance with any regulatory requirements and standards. Further, the Commonwealth also disclaims liability, to the extent permitted by law, for any liabilities, losses, damages and costs arising from any reliance on the contents of this plan.</p>	<p><b>DESIGN</b></p> <p><b>Banksia House</b></p> <p><b>DESIGNED FOR</b></p> <p><b>Cairns</b></p> <p>Technical drawings should be read with the Banksia House Cairns 'Design Options' document which includes building specifications and rating information.</p>	<p><b>DETAILS</b></p> <p><b>Drawing title:</b> Alt Floor Plan - Courtyard</p> <p><b>Scale:</b> 1:100</p> <p><b>Paper size:</b> A3</p> <p><b>Drawing number:</b> 4a/4</p> <p><b>Date issued:</b> March 2020</p> <p><b>Project stage:</b> Preliminary </p>
---------------------------------	---	--	---