



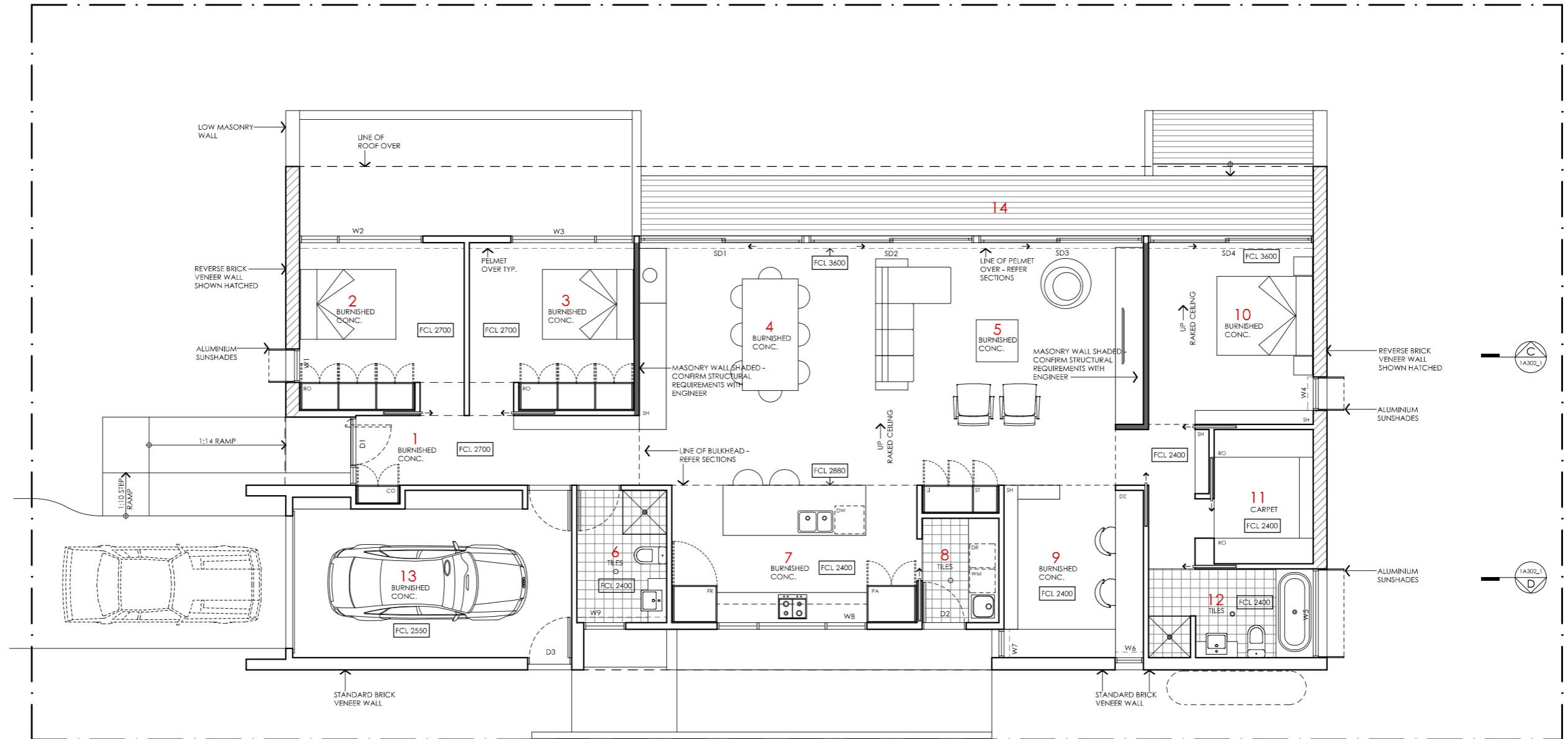


BANKSIA HOUSE

| | | | |
|---------------------------------------------------------------------------------------------------------------------------------------------------------------------------------------------------------------------------------------------------------------------------------------------------------------------------------------------------------------------------------------------------------------------------------------------------------------------------------------------------------------------------------------------------------------------------------------------------------------------------------------------------------------------------------------------------------------------------------------------------------|-----------------------------------------------------------------------------------------------------------------------------------------------------------------------------------------------------------------------------------------------------------------------------------------------------------------------------------------------------------------------------------------------------------------------|------------------------------------------------------------------------------------------------------------------------------------------------------------------------------------------------------------------------------------------------------------|-----------------------------------------------------------------------------------------------------------------------------------------------------------------------------------------------------------------------------------------------------------------------------------------------------------|
| <p>LEGEND N/A</p> | <p>PROJECT</p>  <p>Australian Government</p>  <p>YourHome Australia's guide to environmentally sustainable homes</p>  <p>Design For Place</p> | <p>DESIGN Banksia House</p> <p>DESIGNED FOR Sydney</p> <p>Technical drawings should be read with the Banksia House Sydney 'Design Options' document which includes building specifications and rating information.</p> | <p>DETAILS Drawing title: Site Plan Scale: 1:200 Paper size: A3 Drawing number: 1/11 Date issued: June 2023 Project stage: Preliminary</p>  |
| <p>DISCLAIMER</p> <p>This house plan is a guide only. It does not constitute legal or other professional advice. You should seek legal or other professional advice in relation to your specific circumstances before adopting any recommendation made within it e.g. advice on structural engineering or building certification requirements. The Commonwealth does not accept responsibility for the accuracy or completeness of this plan, its fitness for a particular purpose, or compliance with any regulatory requirements and standards. Further, the Commonwealth also disclaims liability, to the extent permitted by law, for any liabilities, losses, damages and costs arising from any reliance on the contents of this plan.</p> | | | |



KEY

- 1 ENTRY
- 2 BEDROOM 3
- 3 BEDROOM 2
- 4 DINING
- 5 LIVING
- 6 BATHROOM
- 7 KITCHEN
- 8 LAUNDRY
- 9 STUDY
- 10 BEDROOM 1
- 11 WALK IN ROBE
- 12 ENSUITE
- 13 GARAGE
- 14 DECK

LEGEND

- FR FRIDGE
- PA PANTRY
- DW DISH WASHER
- RO ROBE
- DE DESK
- ST STORAGE CUPBOARD
- SH SHELIVING
- WM WASHING MACHINE
- DR CLOTHES DRYER
- CO COAT CUPBOARD
- LI LINEN CUPBOARD
- FCL FINISHED CEILING LEVEL

BANKSIA HOUSE

NOTES

AREA
 GROUND FLOOR LIVING 172 m²
 GARAGE 22 m²
TOTAL GFA 194 m²
 GROUND FLOOR DECKS 30 m²
 INDICATIVE BLOCK SIZE 544 m²

REFER TO NCC FOR SANITARY COMPARTMENT CIRCULATION, WALL REINFORCEMENT AND THRESHOLD/HOB REQUIREMENTS
 DOOR OPENINGS, CORRIDOR WIDTHS AND THRESHOLDS, ENTRY RAMP GRADES AND COVER ETC TO NCC REQUIREMENTS
 CONSTRUCTION NEAR BOUNDARY MUST COMPLY WITH NCC REQUIREMENTS - REVISE TO SUIT LOCAL REGULATIONS AND BUILDING ENVELOPES ETC
 SETBACK FROM BOUNDARIES SHOWN INDICATIVELY ONLY - REVISE TO SUIT LOCAL REGULATIONS AND BUILDING ENVELOPES ETC
 NOTE: GFA CALCULATIONS DO NOT INCLUDE DECKS, TERRACES, COURTYARDS, VERANDAH, POLES, STAIRS & BALCONIES @ UFL. NOTE THAT INTERNAL ROOM DIMENSIONS ARE NOMINAL ONLY.
 CEILING INSULATION VALUES SPECIFIED EXTEND TO EAVES

PROJECT



DISCLAIMER

This house plan is a guide only. It does not constitute legal or other professional advice. You should seek legal or other professional advice in relation to your specific circumstances before adopting any recommendation made within it e.g. advice on structural engineering or building certification requirements. The Commonwealth does not accept responsibility for the accuracy or completeness of this plan, its fitness for a particular purpose, or compliance with any regulatory requirements and standards. Further, the Commonwealth also disclaims liability, to the extent permitted by law, for any liabilities, losses, damages and costs arising from any reliance on the contents of this plan.

DESIGN

Banksia House

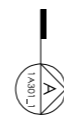
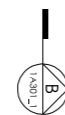
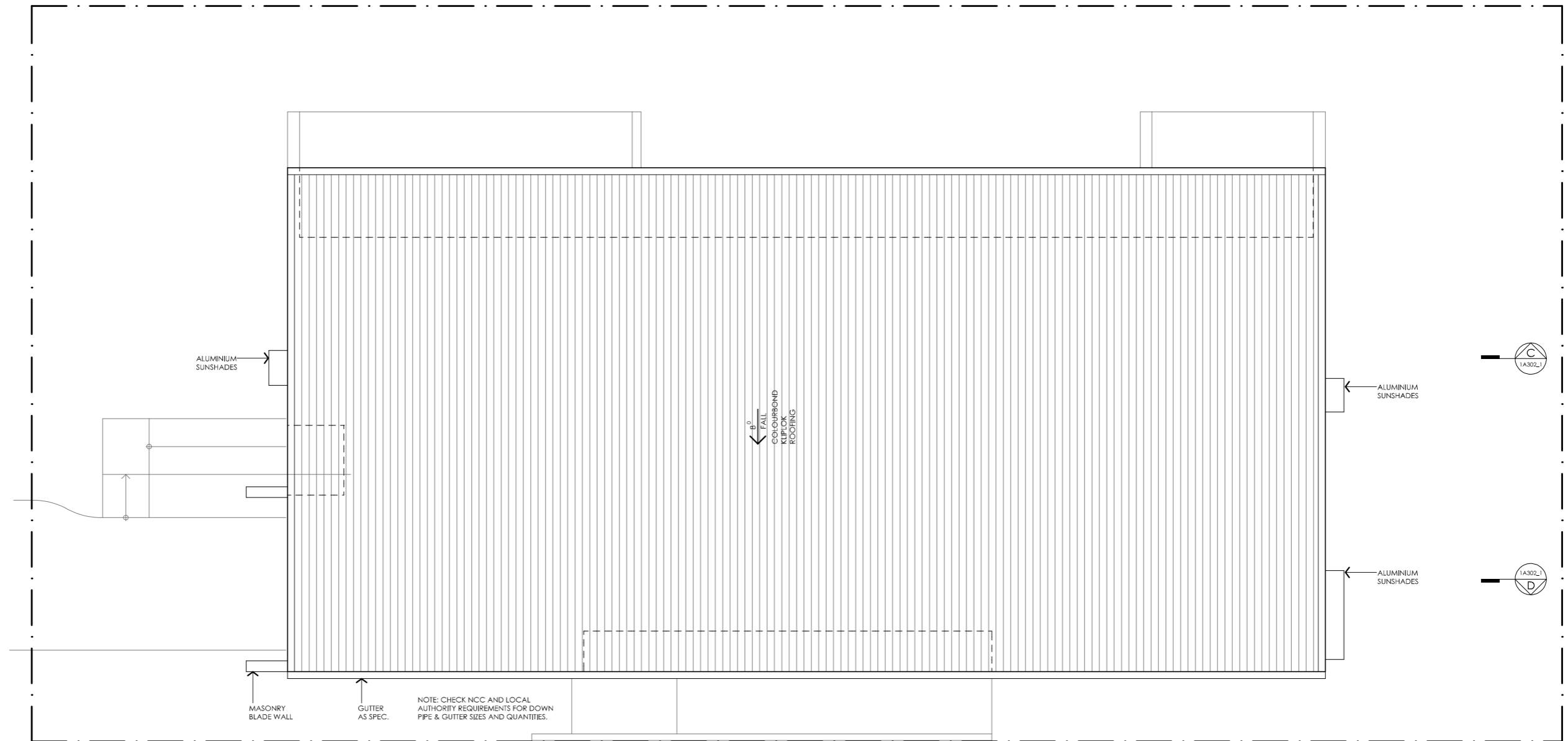
DESIGNED FOR Sydney

Technical drawings should be read with the Banksia House Sydney 'Design Options' document which includes building specifications and rating information.





DETAILS

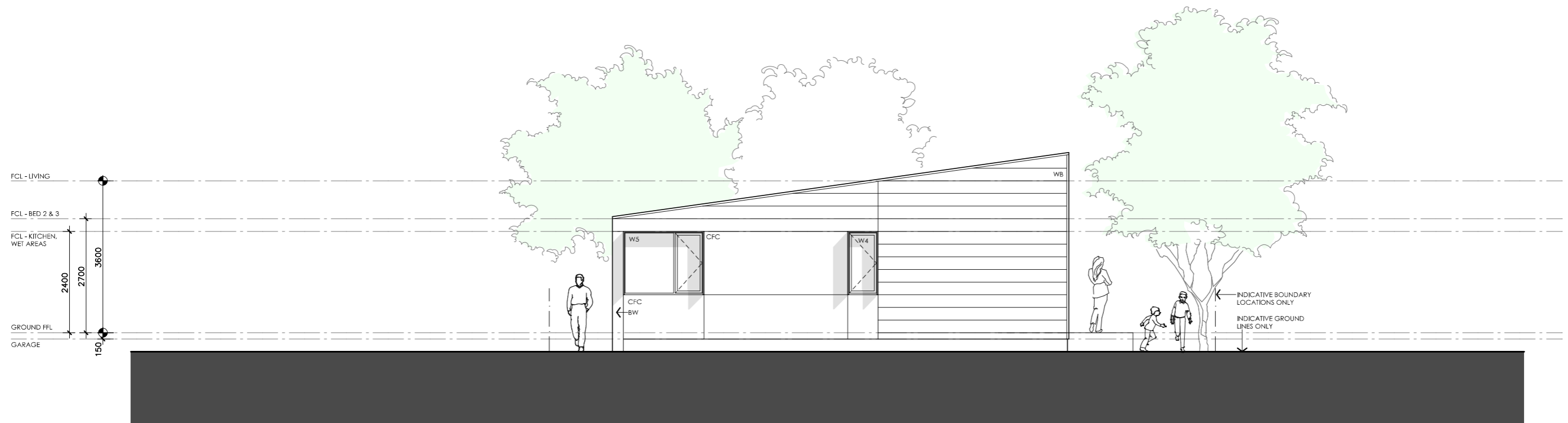
Drawing title: Floor Plan
Scale: 1:100
Paper size: A3
Drawing number: 2/11
Date issued: June 2023
Project stage: Preliminary





BANKSIA HOUSE




| | | | |
|---------------------------------------------------------------------------------------------------------------------------------------------------------------------------------------------------------------------------------------------------------------------------------------------------------------------------------------------------------------------------------------------------------------------------------------------------------------------------------------------------------------------------------------------------------------------------------------------------------------------------------------------------------------------------------------------------------------------------------------------------------|-----------------------------------------------------------------------------------------------------------------------------------------------------------------------------------------------------------------------------------------------------------------------------------------------------------------------------------------------------------------------------------------------------------------------|----------------------------------------------------------------------------------------------------------------------------------------------------------------------------------------------------------------------------------------------|---------------------------------------------------------------------------------------------------------------------------------------------------------------------------|
| <p>LEGEND N/A</p> | <p>PROJECT</p>  <p>Australian Government</p>  <p>YourHome Australia's guide to environmentally sustainable homes</p>  <p>Design For Place</p> | <p>DESIGN Banksia House</p> <p>DESIGNED FOR Sydney</p> <p>Technical drawings should be read with the Banksia House Sydney 'Design Options' document which includes building specifications and rating information.</p> | <p>DETAILS Drawing title: Roof Plan Scale: 1:100 Paper size: A3 Drawing number: 3/11 Date issued: June 2023 Project stage: Preliminary</p> |
| <p>DISCLAIMER</p> <p>This house plan is a guide only. It does not constitute legal or other professional advice. You should seek legal or other professional advice in relation to your specific circumstances before adopting any recommendation made within it e.g. advice on structural engineering or building certification requirements. The Commonwealth does not accept responsibility for the accuracy or completeness of this plan, its fitness for a particular purpose, or compliance with any regulatory requirements and standards. Further, the Commonwealth also disclaims liability, to the extent permitted by law, for any liabilities, losses, damages and costs arising from any reliance on the contents of this plan.</p> | |  | |



02 EAST ELEVATION

1:100

BANKSIA HOUSE

| | | | |
|--------------------------------------------------------------------------------------------------------------------------------------------------------------------------------------------------------------------------------------------------------------------------------------------------------------------------------------------------------------------------------------------------------------------------------------------------------------------------------------------------------|-------------------------------------------------------------------------------------------------------------------------------------------------------------------------------------------------------------------------------------------------------------------------------------------------------------------------------------------------------------------------------------------------------------------------------------------------------------------------------------------------------------------------------------------------------------------------------------------------------------------------------------------------------------------------------------------------------------------------------------------------------------------------------------------------------------------------------------------------------------------------------------------------------------------------------------------------------------------------------------------------------------------------------------------------------------------------------------------------------------------------------------------------------------------------------|------------------------------------------------------------------------------------------------------------------------------------------------------------------------------------------------------------------------------------------------------------------|----------------------------------------------------------------------------------------------------------------------------------------------------------------------------------------------------------------------------------------------|
| <p>LEGEND</p> <p>TF TIMBER FASCIA PROFILE/COLOUR AS SPEC</p> <p>WB WEATHERBOARD LINING ON TIMBER FRAMING & BATTENS PROFILE/COLOUR AS SPEC</p> <p>BW FACE BRICK WORK BRICK AS SPEC</p> <p>CFC COMPRESSED FC CLADDING ON TIMBER FRAMING & BATTENS PROFILE/COLOUR AS SPEC</p> <p>SB STEEL BEAM PAINT FINISH AS SPEC.</p> <p>GD GARAGE DOOR MAKE & COLOUR AS SPEC</p> <p>AL ALUMINIUM COVER PANEL - FOLDED FINISH/COLOUR TO MATCH WINDOW FRAMES</p> | <p>PROJECT</p>  <p>Australian Government</p>  <p>YourHome Australia's guide to environmentally sustainable homes</p>  <p>Design For Place</p> <p>DISCLAIMER</p> <p>This house plan is a guide only. It does not constitute legal or other professional advice. You should seek legal or other professional advice in relation to your specific circumstances before adopting any recommendation made within it e.g. advice on structural engineering or building certification requirements. The Commonwealth does not accept responsibility for the accuracy or completeness of this plan, its fitness for a particular purpose, or compliance with any regulatory requirements and standards. Further, the Commonwealth also disclaims liability, to the extent permitted by law, for any liabilities, losses, damages and costs arising from any reliance on the contents of this plan.</p> | <p>DESIGN</p> <p>Banksia House</p> <p>DESIGNED FOR</p> <p>Sydney</p> <p>Technical drawings should be read with the Banksia House Sydney 'Design Options' document which includes building specifications and rating information.</p> | <p>DETAILS</p> <p>Drawing title: Elevation - East</p> <p>Scale: 1:100</p> <p>Paper size: A3</p> <p>Drawing number: 4/11</p> <p>Date issued: June 2023</p> <p>Project stage: Preliminary</p> |
|--------------------------------------------------------------------------------------------------------------------------------------------------------------------------------------------------------------------------------------------------------------------------------------------------------------------------------------------------------------------------------------------------------------------------------------------------------------------------------------------------------|-------------------------------------------------------------------------------------------------------------------------------------------------------------------------------------------------------------------------------------------------------------------------------------------------------------------------------------------------------------------------------------------------------------------------------------------------------------------------------------------------------------------------------------------------------------------------------------------------------------------------------------------------------------------------------------------------------------------------------------------------------------------------------------------------------------------------------------------------------------------------------------------------------------------------------------------------------------------------------------------------------------------------------------------------------------------------------------------------------------------------------------------------------------------------------|------------------------------------------------------------------------------------------------------------------------------------------------------------------------------------------------------------------------------------------------------------------|----------------------------------------------------------------------------------------------------------------------------------------------------------------------------------------------------------------------------------------------|



01 NORTH ELEVATION

1A201_1 1:100

BANKSIA HOUSE

LEGEND

| | |
|-----|---------------------------------------------------------------------------------|
| TF | TIMBER FASCIA PROFILE/COLOUR AS SPEC |
| WB | WEATHERBOARD LINING ON TIMBER FRAMING & BATTENS PROFILE/COLOUR AS SPEC |
| BW | FACE BRICK WORK BRICK AS SPEC |
| CFC | COMPRESSED FC CLADDING ON TIMBER FRAMING & BATTENS PROFILE/COLOUR AS SPEC |
| SB | STEEL BEAM PAINT FINISH AS SPEC. |
| GD | GARAGE DOOR MAKE & COLOUR AS SPEC |
| AL | ALUMINIUM COVER PANEL - FOLDED FINISH/COLOUR TO MATCH WINDOW FRAMES |

PROJECT



DISCLAIMER

This house plan is a guide only. It does not constitute legal or other professional advice. You should seek legal or other professional advice in relation to your specific circumstances before adopting any recommendation made within it e.g. advice on structural engineering or building certification requirements. The Commonwealth does not accept responsibility for the accuracy or completeness of this plan, its fitness for a particular purpose, or compliance with any regulatory requirements and standards. Further, the Commonwealth also disclaims liability, to the extent permitted by law, for any liabilities, losses, damages and costs arising from any reliance on the contents of this plan.

DESIGN

Banksia House

**DESIGNED FOR
Sydney**

Technical drawings should be read with the Banksia House Sydney 'Design Options' document which includes building specifications and rating information.

DETAILS

Drawing title: Elevation - North

Scale: 1:100

Paper size: A3

Drawing number: 5/11

Date issued: June 2023

Project stage: Preliminary



01 | SOUTH ELEVATION

1A202_1 1:100

BANKSIA HOUSE

LEGEND

| | |
|-----|---------------------------------------------------------------------------------|
| TF | TIMBER FASCIA PROFILE/COLOUR AS SPEC |
| WB | WEATHERBOARD LINING ON TIMBER FRAMING & BATTENS PROFILE/COLOUR AS SPEC |
| BW | FACE BRICK WORK BRICK AS SPEC |
| CFC | COMPRESSED FC CLADDING ON TIMBER FRAMING & BATTENS PROFILE/COLOUR AS SPEC |
| SB | STEEL BEAM PAINT FINISH AS SPEC. |
| GD | GARAGE DOOR MAKE & COLOUR AS SPEC |
| AL | ALUMINIUM COVER PANEL - FOLDED FINISH/COLOUR TO MATCH WINDOW FRAMES |

PROJECT



DISCLAIMER

This house plan is a guide only. It does not constitute legal or other professional advice. You should seek legal or other professional advice in relation to your specific circumstances before adopting any recommendation made within it e.g. advice on structural engineering or building certification requirements. The Commonwealth does not accept responsibility for the accuracy or completeness of this plan, its fitness for a particular purpose, or compliance with any regulatory requirements and standards. Further, the Commonwealth also disclaims liability, to the extent permitted by law, for any liabilities, losses, damages and costs arising from any reliance on the contents of this plan.

DESIGN

Banksia House

**DESIGNED FOR
Sydney**

Technical drawings should be read with the Banksia House Sydney 'Design Options' document which includes building specifications and rating information.

DETAILS

Drawing title: Elevation - South

Scale: 1:100

Paper size: A3

Drawing number: 6/11

Date issued: June 2023

Project stage: Preliminary



02 WEST ELEVATION

1:100

BANKSIA HOUSE

LEGEND

- TF TIMBER FASCIA
PROFILE/COLOUR AS SPEC
- WB WEATHERBOARD LINING ON TIMBER
FRAMING & BATTENS
PROFILE/COLOUR AS SPEC
- BW FACE BRICK WORK
BRICK AS SPEC
- CFC COMPRESSED FC CLADDING ON TIMBER
FRAMING & BATTENS
PROFILE/COLOUR AS SPEC
- SB STEEL BEAM
PAINT FINISH AS SPEC.
- GD GARAGE DOOR
MAKE & COLOUR AS SPEC
- AL ALUMINIUM COVER PANEL - FOLDED
FINISH/COLOUR TO MATCH WINDOW FRAMES

PROJECT



Australian Government



Design For Place

DISCLAIMER

This house plan is a guide only. It does not constitute legal or other professional advice. You should seek legal or other professional advice in relation to your specific circumstances before adopting any recommendation made within it e.g. advice on structural engineering or building certification requirements. The Commonwealth does not accept responsibility for the accuracy or completeness of this plan, its fitness for a particular purpose, or compliance with any regulatory requirements and standards. Further, the Commonwealth also disclaims liability, to the extent permitted by law, for any liabilities, losses, damages and costs arising from any reliance on the contents of this plan.

DESIGN

Banksia House

**DESIGNED FOR
Sydney**

Technical drawings should be read with the Banksia House Sydney 'Design Options' document which includes building specifications and rating information.

DETAILS

Drawing title: Elevation - West

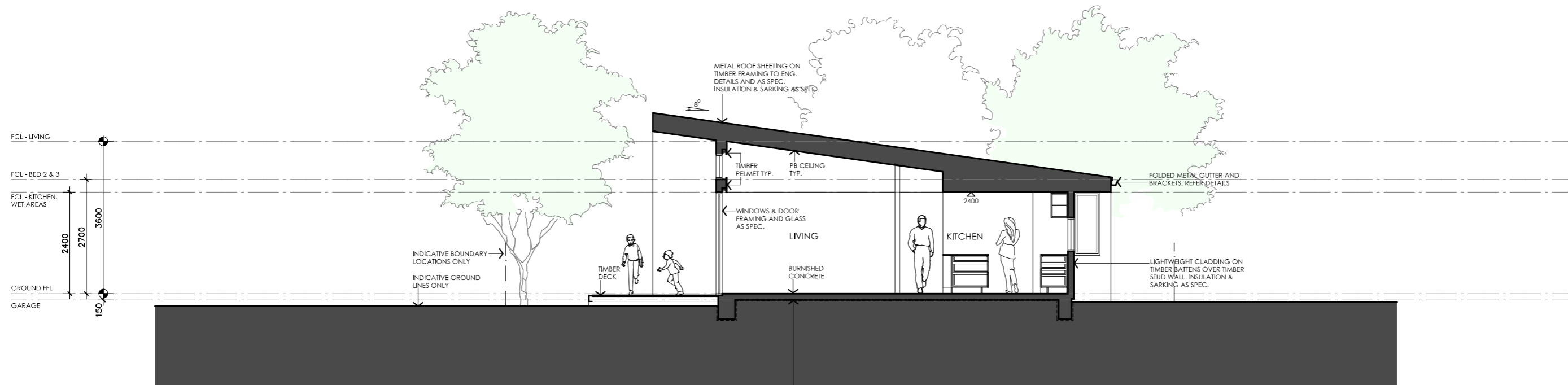
Scale: 1:100

Paper size: A3

Drawing number: 7/11

Date issued: June 2023

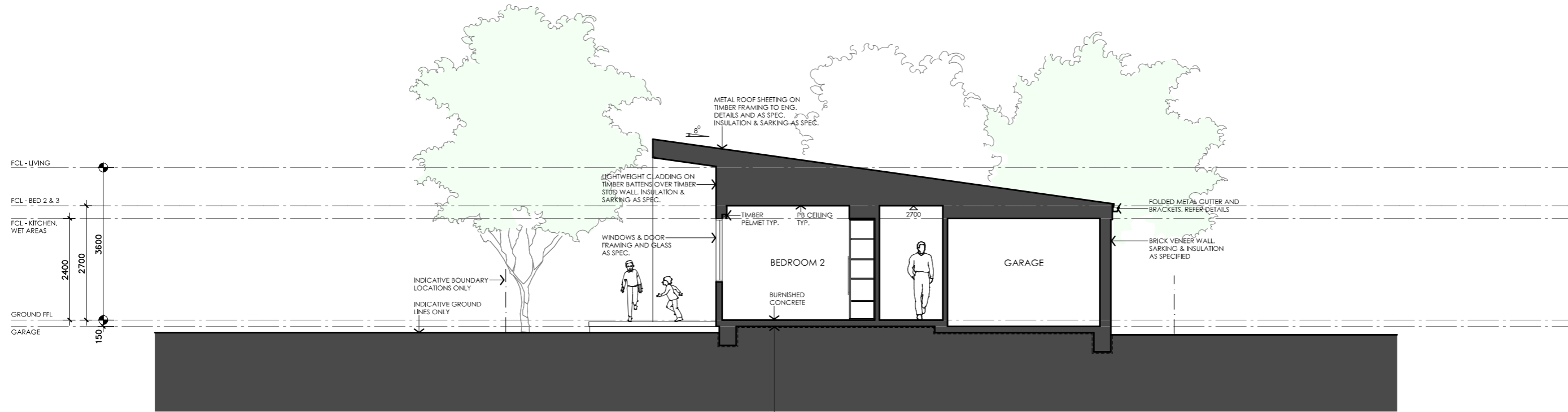
Project stage: Preliminary



01 SECTION AA

1A301_1 1:100

CONCRETE SLAB ON SUB STRUCTURE AND FOOTINGS TO STRUCTURAL ENGINEERS DETAILS. WP MEMBRANE AND COMPACTED SAND UNDER TO BCA. PROVIDE INSULATION UNDER SLAB AS SCHEDULED TO NCC REQUIREMENTS.



02 SECTION BB

1:100

CONCRETE SLAB ON SUB STRUCTURE AND FOOTINGS TO STRUCTURAL ENGINEERS DETAILS. WP MEMBRANE AND COMPACTED SAND UNDER TO BCA. PROVIDE INSULATION UNDER SLAB AS SCHEDULED TO NCC REQUIREMENTS.

BANKSIA HOUSE

| LEGEND | |
|--------|---------------------------------------------------------------------------------|
| TF | TIMBER FASCIA PROFILE/COLOUR AS SPEC |
| WB | WEATHERBOARD LINING ON TIMBER FRAMING & BATTENS PROFILE/COLOUR AS SPEC |
| BW | FACE BRICK WORK BRICK AS SPEC |
| CFC | COMPRESSED FC CLADDING ON TIMBER FRAMING & BATTENS PROFILE/COLOUR AS SPEC |
| SB | STEEL BEAM PAINT FINISH AS SPEC. |
| GD | GARAGE DOOR MAKE & COLOUR AS SPEC |
| AL | ALUMINIUM COVER PANEL - FOLDED FINISH/COLOUR TO MATCH WINDOW FRAMES |

PROJECT



Australian Government



YourHome
Australia's guide to environmentally sustainable homes



Design For Place

DESIGN
Banksia House

DESIGNED FOR
Sydney

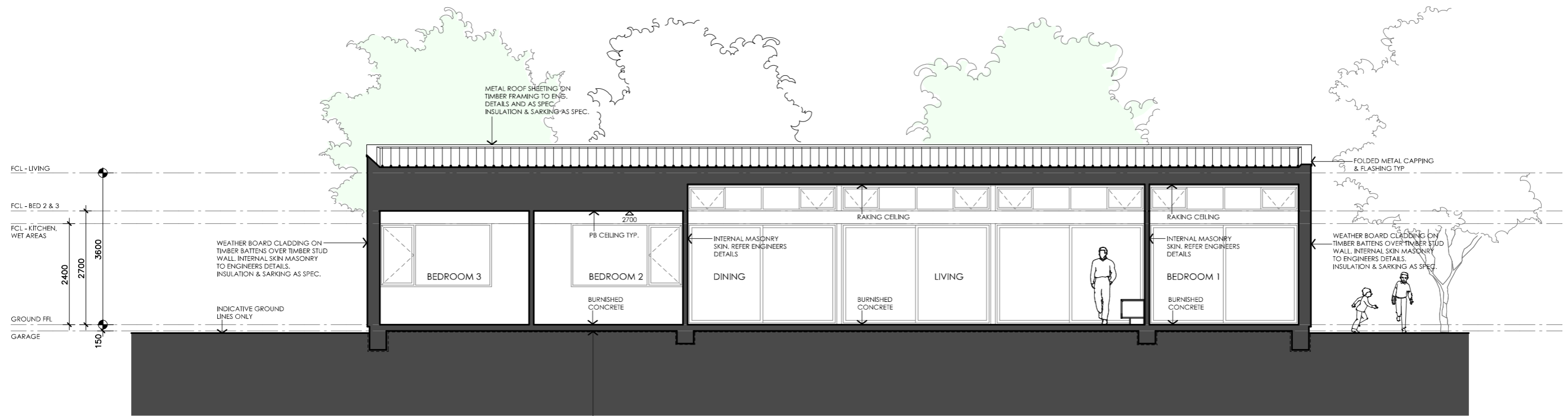
Technical drawings should be read with the Banksia House Sydney 'Design Options' document which includes building specifications and rating information.

DETAILS

Drawing title: Section
Scale: 1:100
Paper size: A3
Drawing number: 8/11
Date issued: June 2023
Project stage: Preliminary

DISCLAIMER

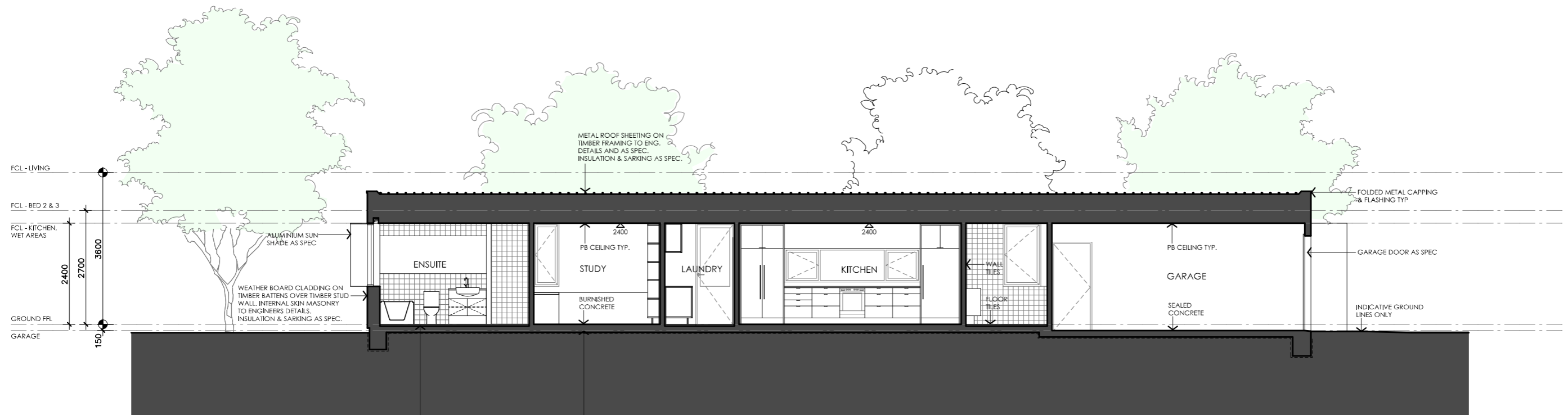
This house plan is a guide only. It does not constitute legal or other professional advice. You should seek legal or other professional advice in relation to your specific circumstances before adopting any recommendation made within it e.g. advice on structural engineering or building certification requirements. The Commonwealth does not accept responsibility for the accuracy or completeness of this plan, its fitness for a particular purpose, or compliance with any regulatory requirements and standards. Further, the Commonwealth also disclaims liability, to the extent permitted by law, for any liabilities, losses, damages and costs arising from any reliance on the contents of this plan.



01 SECTION CC

1A302_1 1:100

CONCRETE SLAB ON SUB STRUCTURE AND FOOTINGS TO STRUCTURAL ENGINEERS DETAILS. WP MEMBRANE AND COMPACTED SAND UNDER TO BCA. PROVIDE INSULATION UNDER SLAB AS SCHEDULED TO NCC REQUIREMENTS.



02 SECTION DD

1:100

CONCRETE SLAB ON SUB STRUCTURE AND FOOTINGS TO STRUCTURAL ENGINEERS DETAILS. WP MEMBRANE AND COMPACTED SAND UNDER TO BCA. PROVIDE INSULATION UNDER SLAB AS SCHEDULED TO NCC REQUIREMENTS.

BANKSIA HOUSE

LEGEND

- TF TIMBER FASCIA
PROFILE/COLOUR AS SPEC
- WB WEATHERBOARD LINING ON TIMBER
FRAMING & BATTENS
PROFILE/COLOUR AS SPEC
- BW FACE BRICK WORK
BRICK AS SPEC
- CFC COMPRESSED FC CLADDING ON TIMBER
FRAMING & BATTENS
PROFILE/COLOUR AS SPEC
- SB STEEL BEAM
PAINT FINISH AS SPEC.
- GD GARAGE DOOR
MAKE & COLOUR AS SPEC
- AL ALUMINIUM COVER PANEL - FOLDED
FINISH/COLOUR TO MATCH WINDOW FRAMES

PROJECT



DISCLAIMER

This house plan is a guide only. It does not constitute legal or other professional advice. You should seek legal or other professional advice in relation to your specific circumstances before adopting any recommendation made within it e.g. advice on structural engineering or building certification requirements. The Commonwealth does not accept responsibility for the accuracy or completeness of this plan, its fitness for a particular purpose, or compliance with any regulatory requirements and standards. Further, the Commonwealth also disclaims liability, to the extent permitted by law, for any liabilities, losses, damages and costs arising from any reliance on the contents of this plan.

DESIGN

Banksia House

**DESIGNED FOR
Sydney**

Technical drawings should be read with the Banksia House Sydney 'Design Options' document which includes building specifications and rating information.

DETAILS

Drawing title: Section

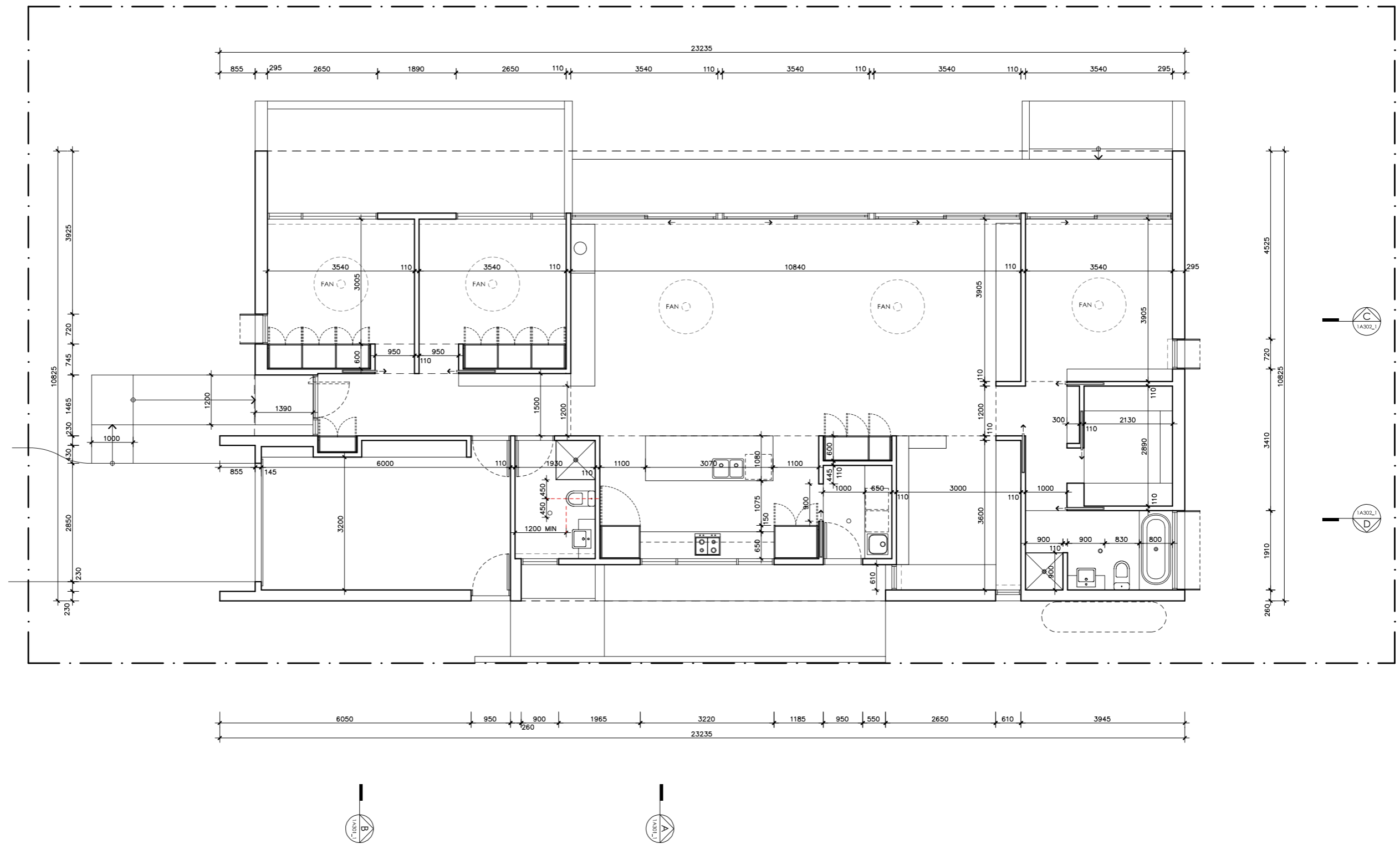
Scale: 1:100

Paper size: A3





Drawing number: 9/11

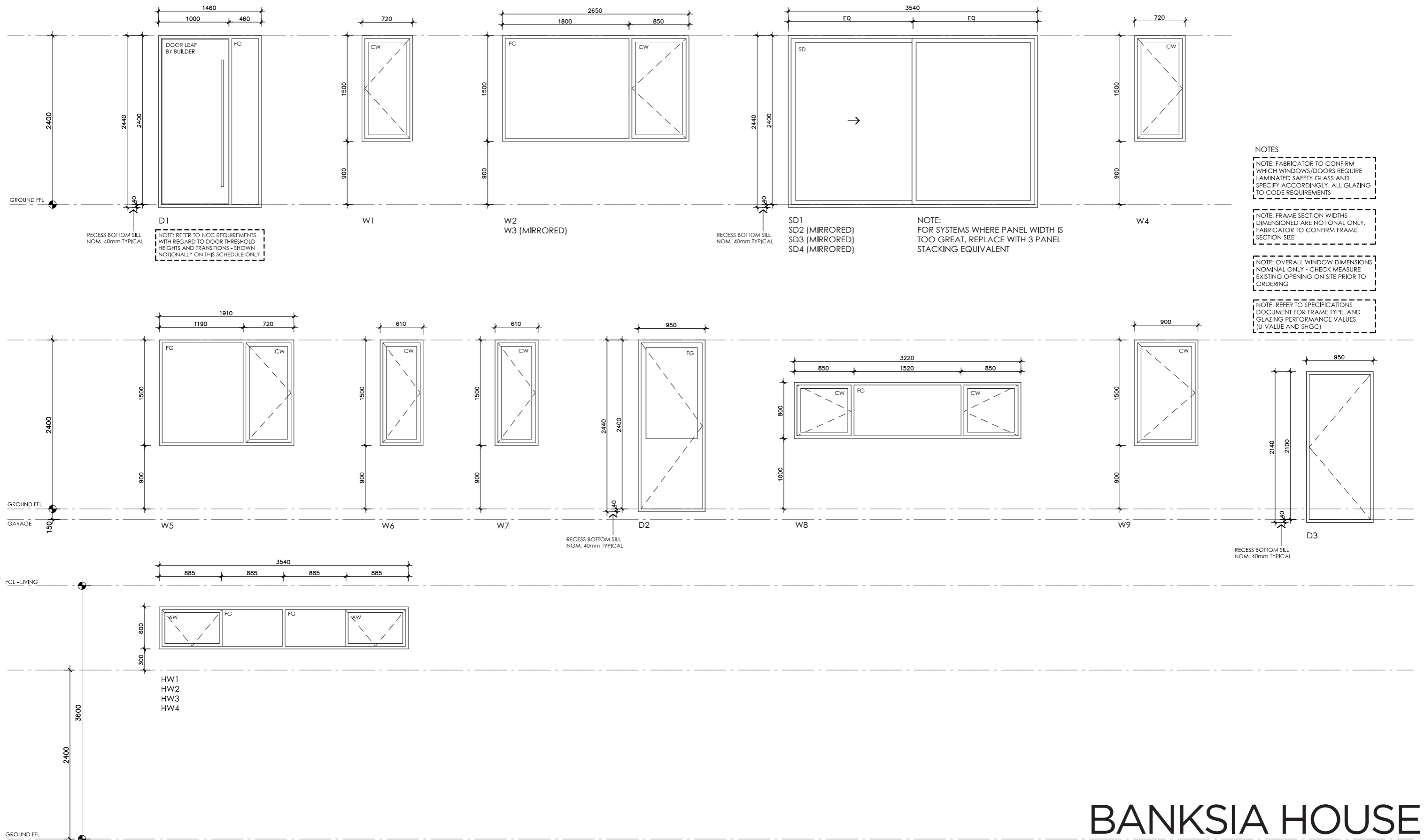
Date issued: June 2023

Project stage: Preliminary



BANKSIA HOUSE

| | | |
|---------------------------------------------------------------------------------------------------------------------------------------------------------------------------------------------------------------------------------------------------------------------------------------------------------------------------------------------------------------------------------------------------------------------------------------------------------------------------------------------------------------------------------------------------------------------------------------------------------------------------------------------------------------------------------------------------------------------------------------------------------|--------------------------------------------------------------------------------------------------------------------------------------------------------------------------------------------------------------------------------------------------------------------------------------------------------------------------------------------------------------------------------------------------------------------------------------------------------------------------------------------------------------------------------------------------------------------------------------------------------------------------------------------------------------------|-----------------------------------------------------------------------------------------------------------------------------------------------------------------------------------------------------------------------------------------------------------------------------------------------------------------|
| <p>LEGEND N/A</p> | <p>PROJECT</p>  <p>Australian Government</p>  <p>YourHome Australia's guide to environmentally sustainable homes</p>  <p>Design For Place</p> <p>DESIGN Banksia House</p> <p>DESIGNED FOR Sydney</p> <p>Technical drawings should be read with the Banksia House Sydney 'Design Options' document which includes building specifications and rating information.</p> | <p>DETAILS</p> <p>Drawing title: Setout Plan Scale: 1:100 Paper size: A3 Drawing number: 10/11 Date issued: June 2023 Project stage: Preliminary</p>  |
| <p>DISCLAIMER</p> <p>This house plan is a guide only. It does not constitute legal or other professional advice. You should seek legal or other professional advice in relation to your specific circumstances before adopting any recommendation made within it e.g. advice on structural engineering or building certification requirements. The Commonwealth does not accept responsibility for the accuracy or completeness of this plan, its fitness for a particular purpose, or compliance with any regulatory requirements and standards. Further, the Commonwealth also disclaims liability, to the extent permitted by law, for any liabilities, losses, damages and costs arising from any reliance on the contents of this plan.</p> | | |



BANKSIA HOUSE

| LEGEND | |
|--------|---------------------------------------------------|
| FG | FIXED GLASS GLAZING TO CODE REQUIREMENTS |
| CW | CASEMENT SASH GLAZING TO CODE REQUIREMENTS |
| AW | AWNING SASH GLAZING TO CODE REQUIREMENTS |
| SD | SLIDING DOOR GLAZING TO CODE REQUIREMENTS |
| SSD | SLIDING STACKER DOOR GLAZING TO CODE REQUIREMENTS |
| SW | SLIDING WINDOW GLAZING TO CODE REQUIREMENTS |



DISCLAIMER

This house plan is a guide only. It does not constitute legal or other professional advice. You should seek legal or other professional advice in relation to your specific circumstances before adopting any recommendation made within it e.g. advice on structural engineering or building certification requirements. The Commonwealth does not accept responsibility for the accuracy or completeness of this plan, its fitness for a particular purpose, or compliance with any regulatory requirements and standards. Further, the Commonwealth also disclaims liability, to the extent permitted by law, for any liabilities, losses, damages and costs arising from any reliance on the contents of this plan.

DESIGN
Banksia House

DESIGNED FOR
Sydney

Technical drawings should be read with the Banksia House Sydney 'Design Options' document which includes building specifications and rating information.

DETAILS

Drawing title: Window and Door Schedule

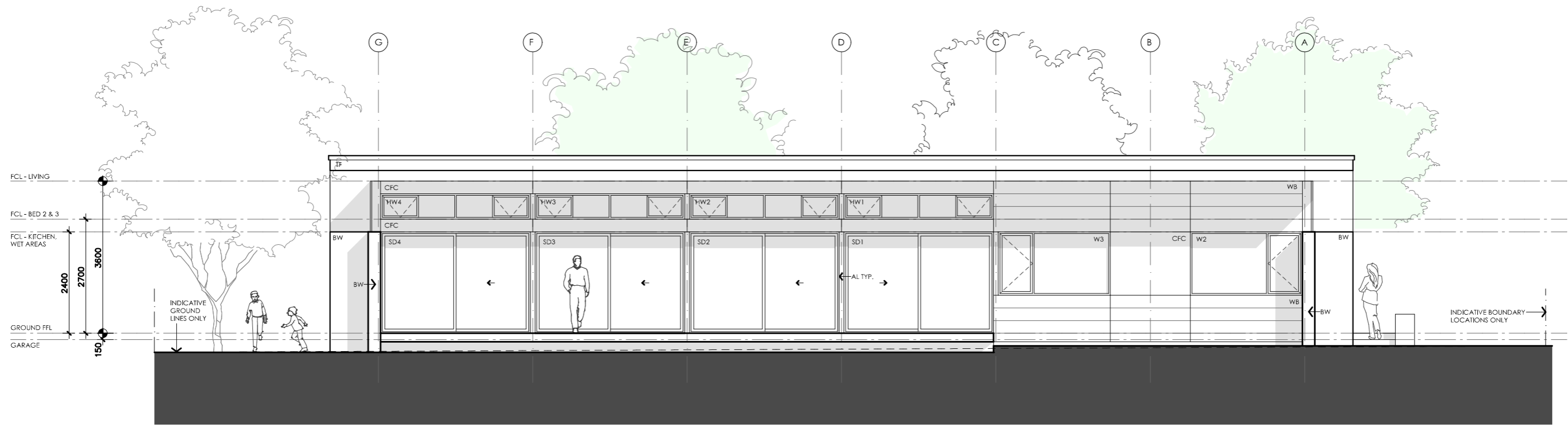
Scale: 1:50

Paper size: A3

Drawing number: 11/11

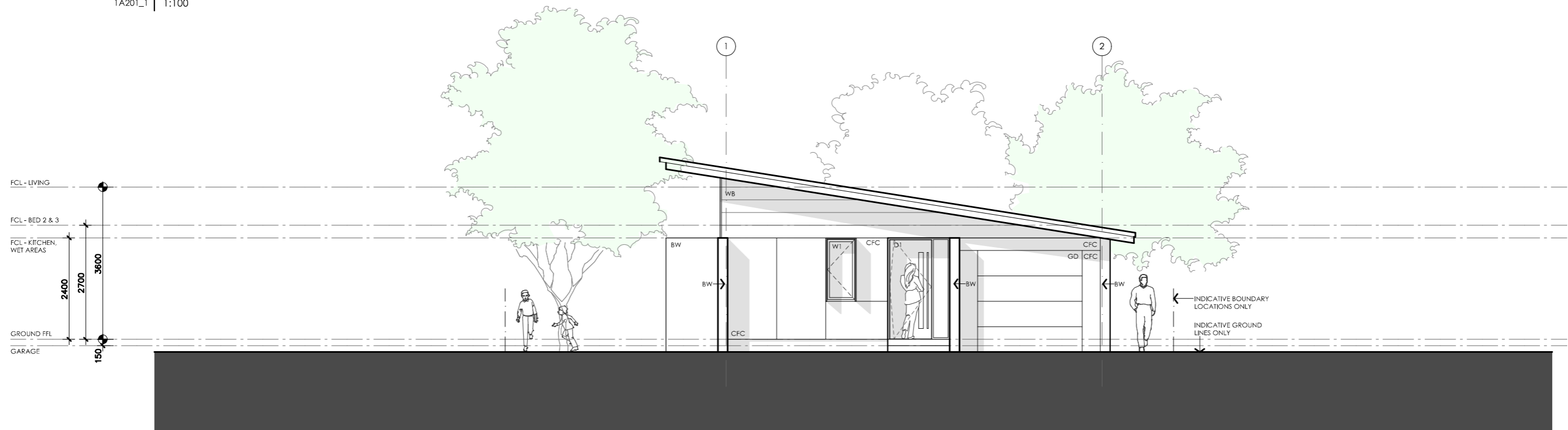
Date issued: June 2023

Project stage: Preliminary



01 NORTH ELEVATION

1A201_1 1:100



02 WEST ELEVATION

1A201_1 1:100

IMPORTANT: This is an alternative concept design for reference only. This design has not been updated to comply with the NCC 2022 accessibility or energy efficiency requirements and does not have associated estimated NatHERS ratings.

BANKSIA HOUSE

| LEGEND | |
|--------|---------------------------------------------------------------------------------|
| TF | TIMBER FASCIA PROFILE/COLOUR AS SPEC |
| WB | WEATHERBOARD LINING ON TIMBER FRAMING & BATTENS PROFILE/COLOUR AS SPEC |
| BW | FACE BRICK WORK BRICK AS SPEC |
| CFC | COMPRESSED FC CLADDING ON TIMBER FRAMING & BATTENS PROFILE/COLOUR AS SPEC |
| SB | STEEL BEAM PAINT FINISH AS SPEC. |
| GD | GARAGE DOOR MAKE & COLOUR AS SPEC |
| AL | ALUMINIUM COVER PANEL - FOLDED FINISH/COLOUR TO MATCH WINDOW FRAMES |

PROJECT



Australian Government



YourHome
Australia's guide to environmentally sustainable homes



Design For Place

DISCLAIMER

This house plan is a guide only. It does not constitute legal or other professional advice. You should seek legal or other professional advice in relation to your specific circumstances before adopting any recommendation made within it e.g. advice on structural engineering or building certification requirements. The Commonwealth does not accept responsibility for the accuracy or completeness of this plan, its fitness for a particular purpose, or compliance with any regulatory requirements and standards. Further, the Commonwealth also disclaims liability, to the extent permitted by law, for any liabilities, losses, damages and costs arising from any reliance on the contents of this plan.

DESIGN

Banksia House

DESIGNED FOR

Sydney

Technical drawings should be read with the Banksia House Sydney 'Design Options' document which includes building specifications and rating information.

DETAILS

Drawing title: Elevations – alt. roof line

Scale: 1:100

Paper size: A3

Drawing number: 1a/4

Date issued: March 2020

Project stage: Preliminary

DETAILS

Drawing title: Elevations – alt. roof line

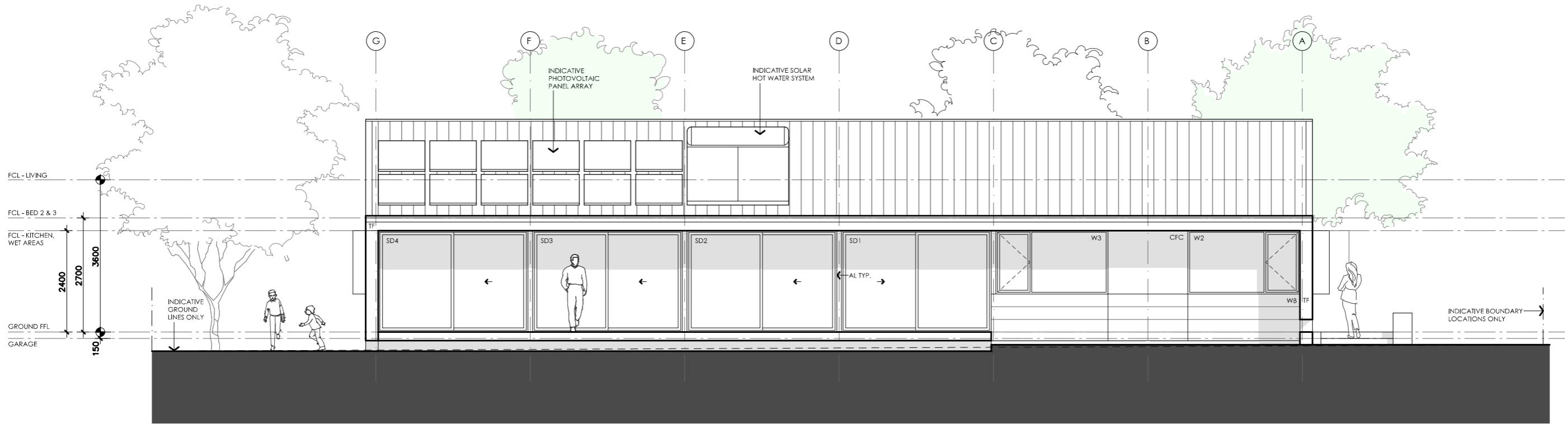
Scale: 1:100

Paper size: A3

Drawing number: 1a/4

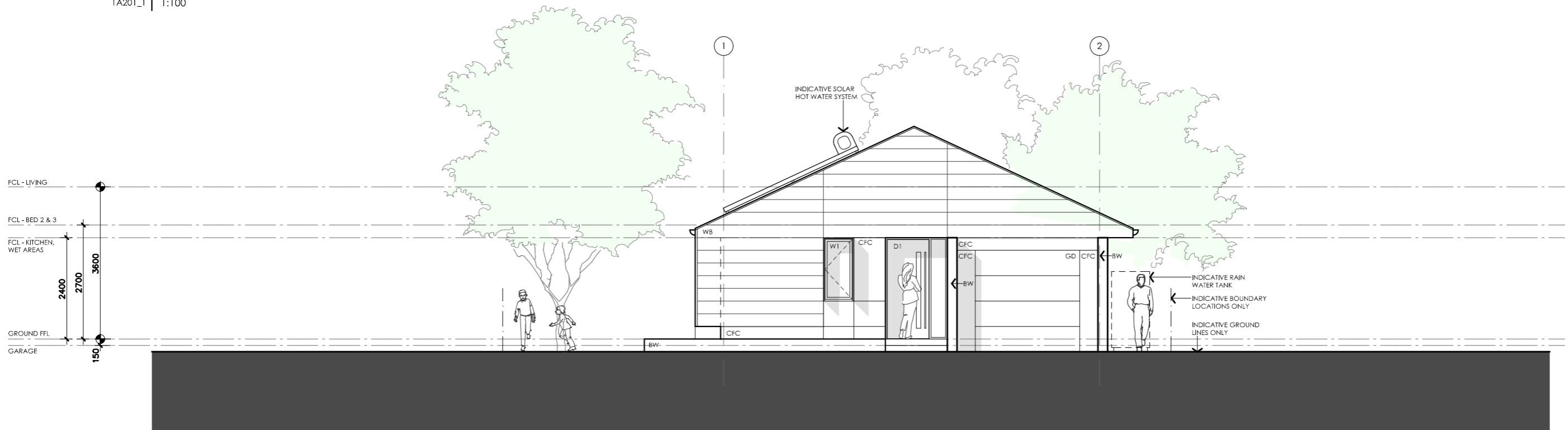
Date issued: March 2020

Project stage: Preliminary



01 NORTH ELEVATION

1A201_1 1:100



02 WEST ELEVATION

1A201_1 1:100

IMPORTANT: This is an alternative concept design for reference only. This design has not been updated to comply with the NCC 2022 accessibility or energy efficiency requirements and does not have associated estimated NatHERS ratings.

BANKSIA HOUSE

| LEGEND | |
|--------|---------------------------------------------------------------------------------|
| TF | TIMBER FASCIA PROFILE/COLOUR AS SPEC |
| WB | WEATHERBOARD LINING ON TIMBER FRAMING & BATTENS PROFILE/COLOUR AS SPEC |
| BW | FACE BRICK WORK BRICK AS SPEC |
| CFC | COMPRESSED FC CLADDING ON TIMBER FRAMING & BATTENS PROFILE/COLOUR AS SPEC |
| SB | STEEL BEAM PAINT FINISH AS SPEC. |
| GD | GARAGE DOOR MAKE & COLOUR AS SPEC |
| AL | ALUMINIUM COVER PANEL - FOLDED FINISH/COLOUR TO MATCH WINDOW FRAMES |

PROJECT



Australian Government



YourHome
Australia's guide to environmentally sustainable homes



Design For Place

DISCLAIMER

This house plan is a guide only. It does not constitute legal or other professional advice. You should seek legal or other professional advice in relation to your specific circumstances before adopting any recommendation made within it e.g. advice on structural engineering or building certification requirements. The Commonwealth does not accept responsibility for the accuracy or completeness of this plan, its fitness for a particular purpose, or compliance with any regulatory requirements and standards. Further, the Commonwealth also disclaims liability, to the extent permitted by law, for any liabilities, losses, damages and costs arising from any reliance on the contents of this plan.

DESIGN
Banksia House

DESIGNED FOR
Sydney

Technical drawings should be read with the Banksia House Sydney 'Design Options' document which includes building specifications and rating information.

DETAILS

Drawing title: Elevations – alt. roof line

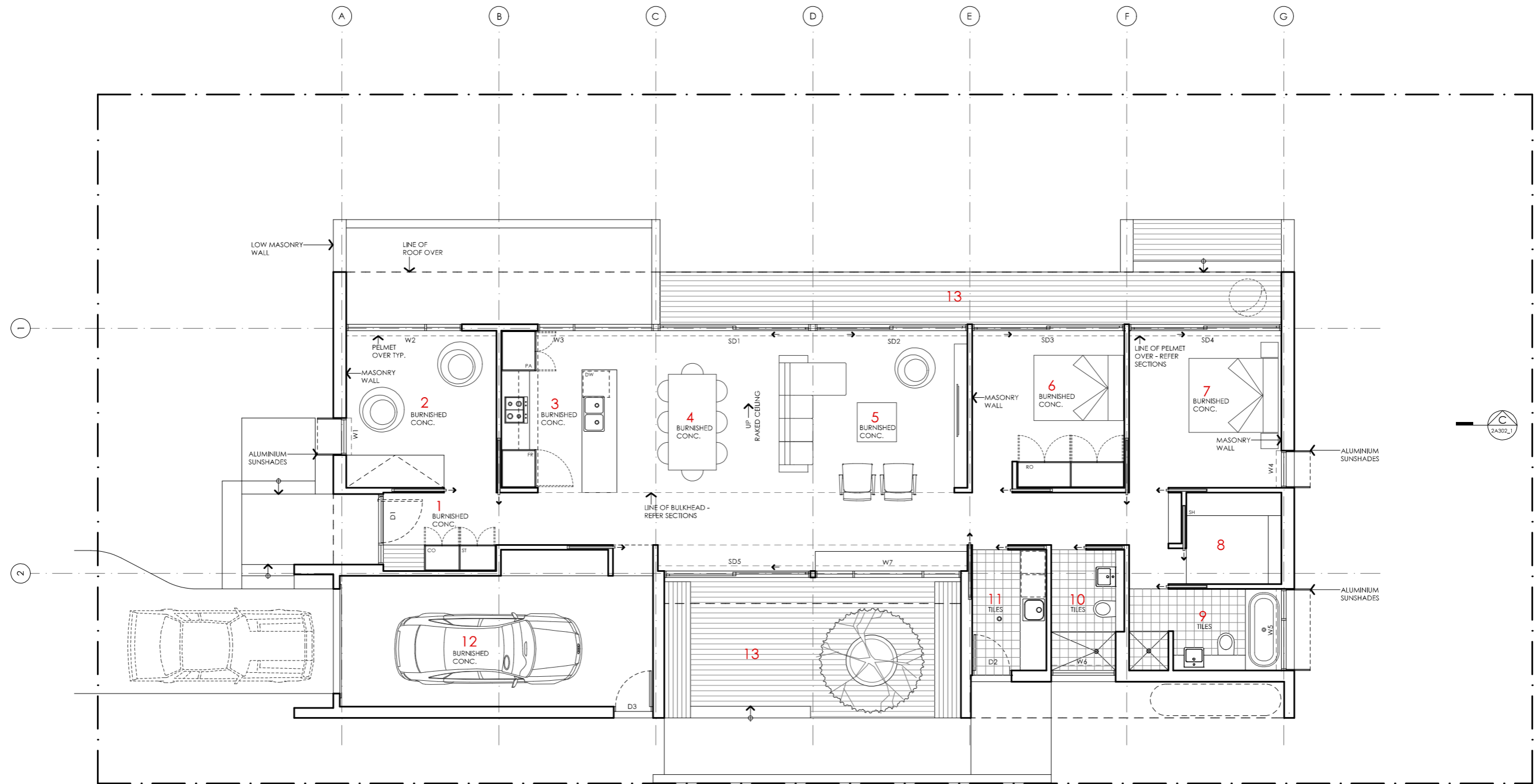
Scale: 1:100

Paper size: A3

Drawing number: 2a/4

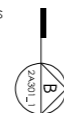
Date issued: March 2020

Project stage: Preliminary



| KEY | AREA |
|---------------------|------------------------------------------|
| 1 ENTRY | GROUND FLOOR LIVING 141 m ² |
| 2 STUDY / BEDROOM 3 | GARAGE 28 m ² |
| 3 KITCHEN | TOTAL GFA 169 m² |
| 4 DINING | GROUND FLOOR DECKS 35 m ² |
| 5 LIVING | INDICATIVE BLOCK SIZE 544 m ² |
| 6 BEDROOM 2 | |
| 7 BEDROOM 1 | |
| 8 ROBE | |
| 9 ENSUITE | |
| 10 BATHROOM | |
| 11 LAUNDRY | |
| 12 GARAGE | |
| 13 DECK | |

NOTE: GFA CALCULATIONS DO NOT INCLUDE DECKS, CARPORTS, COURTYARDS, VERANDAHS OR NB WALLS



IMPORTANT: This is an alternative concept design for reference only. This design has not been updated to comply with the NCC 2022 accessibility or energy efficiency requirements and does not have associated estimated NatHERS ratings.



BANKSIA HOUSE

LEGEND
N/A

PROJECT



Australian Government



YourHome
Australia's guide to environmentally sustainable homes



Design For Place

DISCLAIMER

This house plan is a guide only. It does not constitute legal or other professional advice. You should seek legal or other professional advice in relation to your specific circumstances before adopting any recommendation made within it e.g. advice on structural engineering or building certification requirements. The Commonwealth does not accept responsibility for the accuracy or completeness of this plan, its fitness for a particular purpose, or compliance with any regulatory requirements and standards. Further, the Commonwealth also disclaims liability, to the extent permitted by law, for any liabilities, losses, damages and costs arising from any reliance on the contents of this plan.

DESIGN
Banksia House

DESIGNED FOR
Sydney

Technical drawings should be read with the Banksia House Sydney 'Design Options' document which includes building specifications and rating information.

DETAILS

Drawing title: Alt Floor Plan - 2 Bedroom


Scale: 1:100

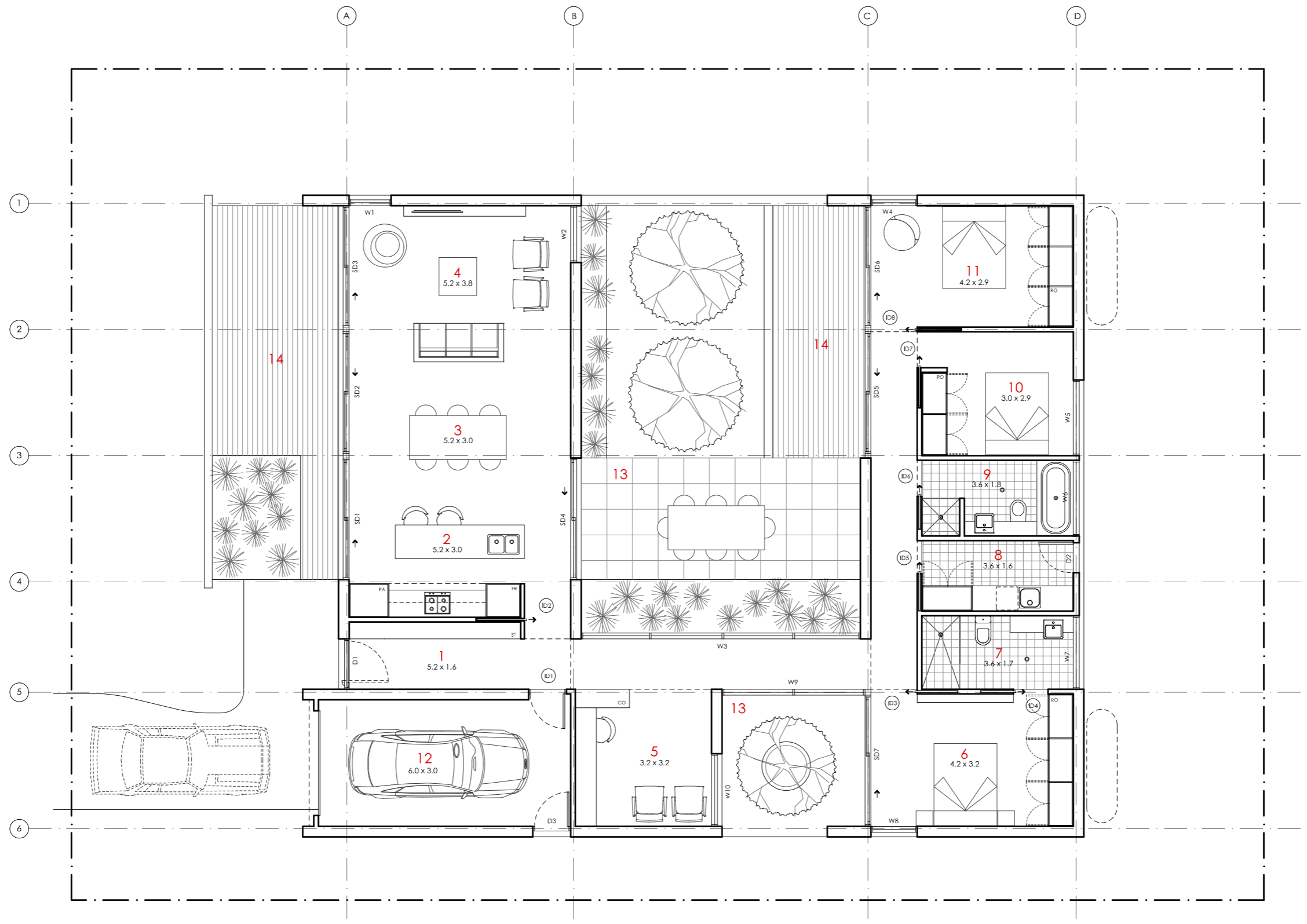
Paper size: A3

Drawing number: 3a/4

Date issued: March 2020

Project stage: Preliminary





- KEY**
- 1 ENTRY
 - 2 KITCHEN
 - 3 DINING
 - 4 LIVING
 - 5 STUDY
 - 6 BEDROOM 1
 - 7 ENSUITE
 - 8 LAUNDRY
 - 9 BATHROOM
 - 10 BEDROOM 2
 - 11 BEDROOM 3
 - 12 GARAGE
 - 13 COURTYARD
 - 14 DECK

AREA





GROUND FLOOR LIVING 167 m²
 GARAGE 22 m²
TOTAL GFA 189 m²
 GROUND FLOOR DECKS 25 m²

INDICATIVE BLOCK SIZE 560 m²

NOTE: GFA CALCULATIONS DO NOT INCLUDE DECKS, CARPORTS, COURTYARDS, VERANDAHs

IMPORTANT: This is an alternative concept design for reference only. This design has not been updated to comply with the NCC 2022 accessibility or energy efficiency requirements and does not have associated estimated NatHERS ratings.

BANKSIA HOUSE

| | | | |
|---------------------------------|-----------------------------------------------------------------------------------------------------------------------------------------------------------------------------------------------------------------------------------------------------------------------------------------------------------------------------------------------------------------------------------------------------------------------------------------------------------------------------------------------------------------------------------------------------------------------------------------------------------------------------------------------------------------------------------------------------------------------------------------------------------------------------------------------------------------------------------------------------------------------------------------------------------------------------------------------------------------------------------------------------------------------------------------------|------------------------------------------------------------------------------------------------------------------------------------------------------------------------------------------------------------------------------------------------------------------|-----------------------------------------------------------------------------------------------------------------------------------------------------------------------------------------------------------------------------------------------------------------------------------------------------------------------------------------------|
| <p>LEGEND</p> <p>N/A</p> | <p>PROJECT</p>    <p>DISCLAIMER</p> <p>This house plan is a guide only. It does not constitute legal or other professional advice. You should seek legal or other professional advice in relation to your specific circumstances before adopting any recommendation made within it e.g. advice on structural engineering or building certification requirements. The Commonwealth does not accept responsibility for the accuracy or completeness of this plan, its fitness for a particular purpose, or compliance with any regulatory requirements and standards. Further, the Commonwealth also disclaims liability, to the extent permitted by law, for any liabilities, losses, damages and costs arising from any reliance on the contents of this plan.</p> | <p>DESIGN</p> <p>Banksia House</p> <p>DESIGNED FOR</p> <p>Sydney</p> <p>Technical drawings should be read with the Banksia House Sydney 'Design Options' document which includes building specifications and rating information.</p> | <p>DETAILS</p> <p>Drawing title: Alt Floor Plan - Courtyard</p> <p>Scale: 1:100</p> <p>Paper size: A3</p> <p>Drawing number: 4a/4</p> <p>Date issued: March 2020</p> <p>Project stage: Preliminary </p> |
|---------------------------------|-----------------------------------------------------------------------------------------------------------------------------------------------------------------------------------------------------------------------------------------------------------------------------------------------------------------------------------------------------------------------------------------------------------------------------------------------------------------------------------------------------------------------------------------------------------------------------------------------------------------------------------------------------------------------------------------------------------------------------------------------------------------------------------------------------------------------------------------------------------------------------------------------------------------------------------------------------------------------------------------------------------------------------------------------|------------------------------------------------------------------------------------------------------------------------------------------------------------------------------------------------------------------------------------------------------------------|-----------------------------------------------------------------------------------------------------------------------------------------------------------------------------------------------------------------------------------------------------------------------------------------------------------------------------------------------|