



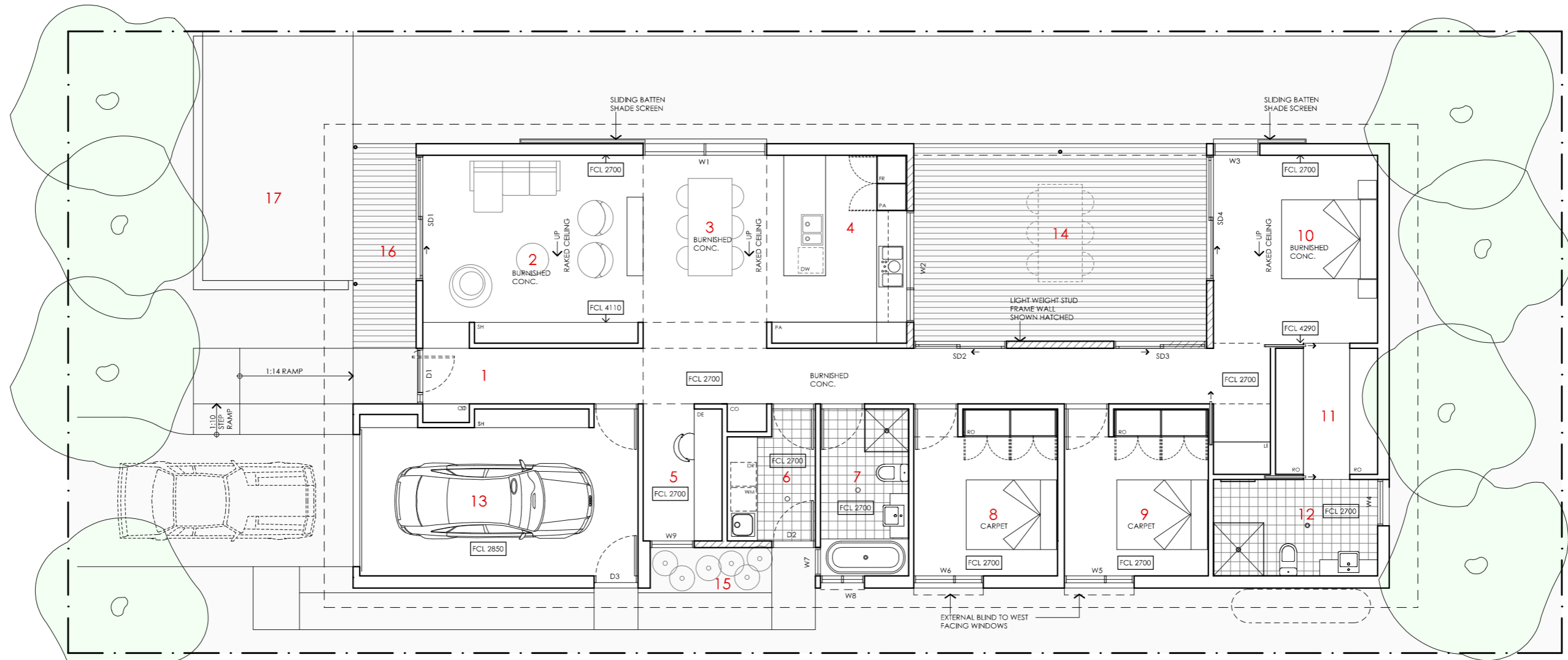


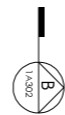
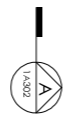
GREVILLEA HOUSE

<p>LEGEND</p> <p>N/A</p>	<p>PROJECT</p>  <p>Australian Government</p>  <p>Australia's guide to environmentally sustainable homes</p>  <p>Design For Place</p> <p>DISCLAIMER</p> <p>This house plan is a guide only. It does not constitute legal or other professional advice. You should seek legal or other professional advice in relation to your specific circumstances before adopting any recommendation made within it e.g. advice on structural engineering or building certification requirements. The Commonwealth does not accept responsibility for the accuracy or completeness of this plan, its fitness for a particular purpose, or compliance with any regulatory requirements and standards. Further, the Commonwealth also disclaims liability, to the extent permitted by law, for any liabilities, losses, damages and costs arising from any reliance on the contents of this plan.</p>	<p>DESIGN</p> <p>Grevillea House</p> <p>DESIGNED FOR</p> <p>Cairns</p> <p>Technical drawings should be read with the Grevillea House Cairns 'Design Options' document which includes building specifications and rating information.</p>	<p>DETAILS</p> <p>Drawing title: Site Plan</p> <p>Scale: 1:200</p> <p>Paper size: A3</p> <p>Drawing number: 1/11</p> <p>Date issued: June 2023</p> <p>Project stage: Preliminary</p> 
---------------------------------	--	--	---



- KEY**
- 1 ENTRY
 - 2 LIVING
 - 3 DINING
 - 4 KITCHEN
 - 5 STUDY
 - 6 LAUNDRY
 - 7 BATHROOM
 - 8 BEDROOM 3
 - 9 BEDROOM 2
 - 10 BEDROOM 1
 - 11 WALK IN ROBE
 - 12 ENSUITE
 - 13 GARAGE
 - 14 CENTRAL COURTYARD
 - 15 SERVICES COURT
 - 16 FRONT DECK
 - 17 NORTHERN COURTYARD

- LEGEND**
- FR FRIDGE
 - PA PANTRY
 - DW DISH WASHER
 - RO ROBE
 - DE DESK
 - ST STORAGE CUPBOARD
 - SH SHELVING
 - WM WASHING MACHINE
 - DR CLOTHES DRYER
 - CO COAT CUPBOARD
 - LI LINEN CUPBOARD
 - FCL FINISHED CEILING LEVEL



GREVILLEA HOUSE

NOTES

AREA

GROUND FLOOR LIVING	153 m ²
GARAGE	22 m ²
TOTAL GFA	175 m²
GROUND FLOOR DECKS	30 m ²
INDICATIVE BLOCK SIZE	431 m ²

REFER TO NCC FOR SANITARY COMPARTMENT CIRCULATION, WALL REINFORCEMENT AND THRESHOLD/HOB REQUIREMENTS

DOOR OPENINGS, CORRIDOR WIDTHS AND THRESHOLDS, ENTRY RAMP GRADES AND COVER ETC TO NCC REQUIREMENTS

CONSTRUCTION NEAR BOUNDARY MUST COMPLY WITH NCC REQUIREMENTS - REVISE TO SUIT LOCAL REGULATIONS AND BUILDING ENVELOPES ETC

SETBACK FROM BOUNDARIES SHOWN INDICATIVELY ONLY - REVISE TO SUIT LOCAL REGULATIONS AND BUILDING ENVELOPES ETC

NOTE: GFA CALCULATIONS DO NOT INCLUDE DECKS, TERRACES, COURTYARDS, VERANDAH, VOIDS, STAIRS & BALCONIES @ UFL. NOTE THAT INTERNAL ROOM DIMENSIONS ARE NOMINAL ONLY.

CEILING INSULATION VALUES SPECIFIED EXTEND TO EAVES

PROJECT



Australian Government



YourHome
Australia's guide to environmentally sustainable homes



Design For Place

DISCLAIMER

This house plan is a guide only. It does not constitute legal or other professional advice. You should seek legal or other professional advice in relation to your specific circumstances before adopting any recommendation made within it e.g. advice on structural engineering or building certification requirements. The Commonwealth does not accept responsibility for the accuracy or completeness of this plan, its fitness for a particular purpose, or compliance with any regulatory requirements and standards. Further, the Commonwealth also disclaims liability, to the extent permitted by law, for any liabilities, losses, damages and costs arising from any reliance on the contents of this plan.

DESIGN

Grevillea House

DESIGNED FOR

Cairns

Technical drawings should be read with the Grevillea House Cairns 'Design Options' document which includes building specifications and rating information.

DETAILS

Drawing title: Floor Plan


Scale: 1:100

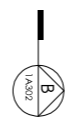
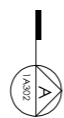
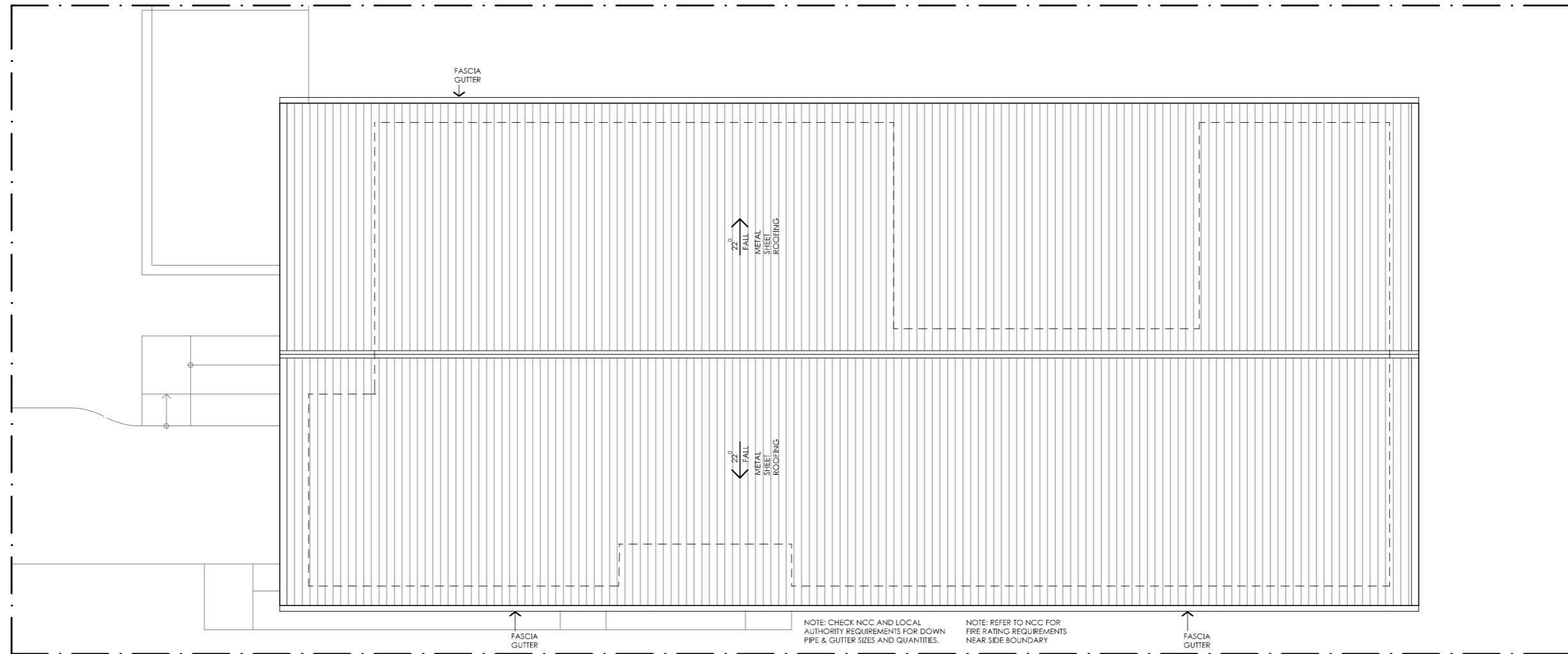
Paper size: A3

Drawing number: 2/11





Date issued: June 2023

Project stage: Preliminary








GREVILLEA HOUSE

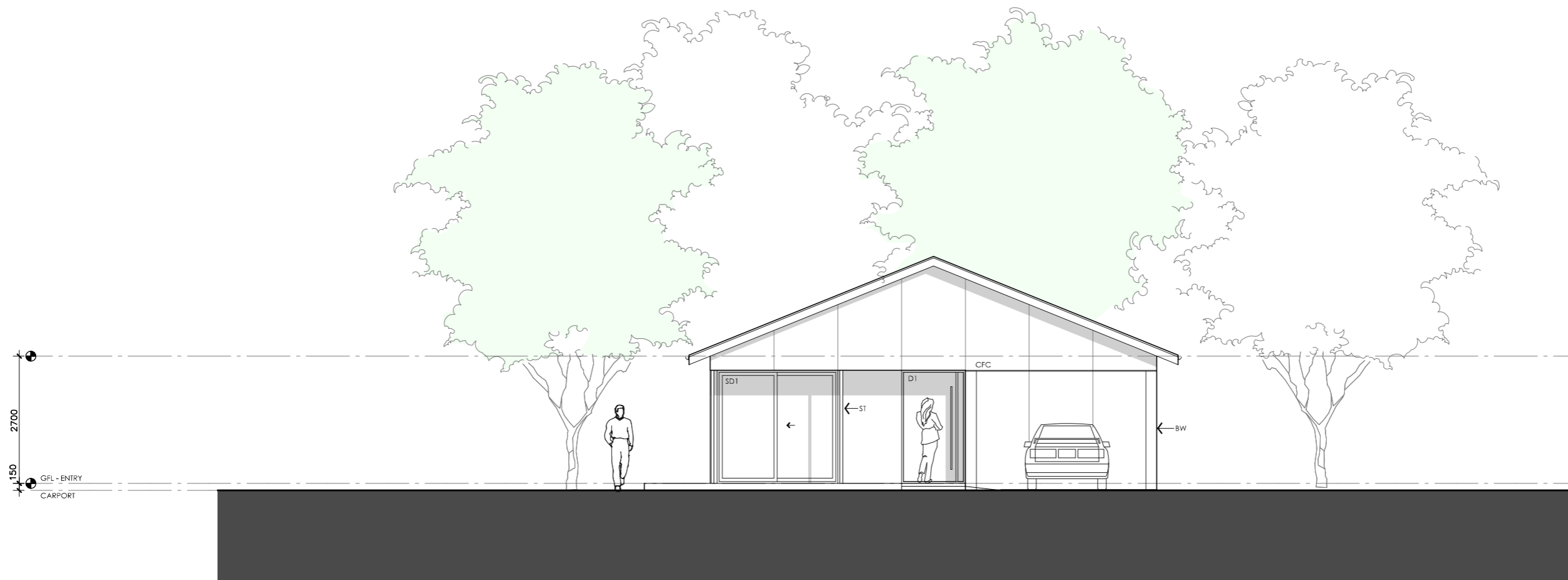
<p>LEGEND</p> <p>N/A</p>	<p>PROJECT</p>  <p>Australian Government</p>  <p>YourHome Australia's guide to environmentally sustainable homes</p>  <p>Design For Place</p>	<p>DESIGN</p> <p>Grevillea House</p> <p>DESIGNED FOR</p> <p>Cairns</p> <p>Technical drawings should be read with the Grevillea House Cairns 'Design Options' document which includes building specifications and rating information.</p>	<p>DETAILS</p> <p>Drawing title: Roof Plan</p> <p>Scale: 1:100</p> <p>Paper size: A3</p> <p>Drawing number: 3/11</p> <p>Date issued: June 2023</p> <p>Project stage: Preliminary</p>
<p>DISCLAIMER</p> <p>This house plan is a guide only. It does not constitute legal or other professional advice. You should seek legal or other professional advice in relation to your specific circumstances before adopting any recommendation made within it e.g. advice on structural engineering or building certification requirements. The Commonwealth does not accept responsibility for the accuracy or completeness of this plan, its fitness for a particular purpose, or compliance with any regulatory requirements and standards. Further, the Commonwealth also disclaims liability, to the extent permitted by law, for any liabilities, losses, damages and costs arising from any reliance on the contents of this plan.</p>			



01 EAST ELEVATION
1:100

GREVILLEA HOUSE




<p>LEGEND</p> <p>BW FACE BRICK WALL TYPE & COLOUR TBC</p> <p>WB WEATHERBOARD CLADDING TYPE & COLOUR TBC</p> <p>CFC COMPRESSED FC SHEET ON TIMBER FRAME EXPRESSED JOINT AT EDGES INDICATED</p> <p>MF FOLDED METAL FASCIA COLOUR TBC</p> <p>ST STEEL WORK COLOUR TBC</p> <p>GD GARAGE DOOR COLOUR TBC</p> <p>AL ALUMINIUM COVER PLATE COLOUR TO MATCH WINDOW FRAMES</p>	<p>PROJECT</p>  <p>Australian Government</p>  <p>YourHome Australia's guide to environmentally sustainable homes</p>  <p>Design For Place</p> <p>DISCLAIMER</p> <p>This house plan is a guide only. It does not constitute legal or other professional advice. You should seek legal or other professional advice in relation to your specific circumstances before adopting any recommendation made within it e.g. advice on structural engineering or building certification requirements. The Commonwealth does not accept responsibility for the accuracy or completeness of this plan, its fitness for a particular purpose, or compliance with any regulatory requirements and standards. Further, the Commonwealth also disclaims liability, to the extent permitted by law, for any liabilities, losses, damages and costs arising from any reliance on the contents of this plan.</p>	<p>DESIGN</p> <p>Grevillea House</p> <p>DESIGNED FOR</p> <p>Cairns</p> <p>Technical drawings should be read with the Grevillea House Cairns 'Design Options' document which includes building specifications and rating information.</p>	<p>DETAILS</p> <p>Drawing title: Elevation-East</p> <p>Scale: 1:100</p> <p>Paper size: A3</p> <p>Drawing number: 4/11</p> <p>Date issued: June 2023</p> <p>Project stage: Preliminary</p>
--	---	--	--

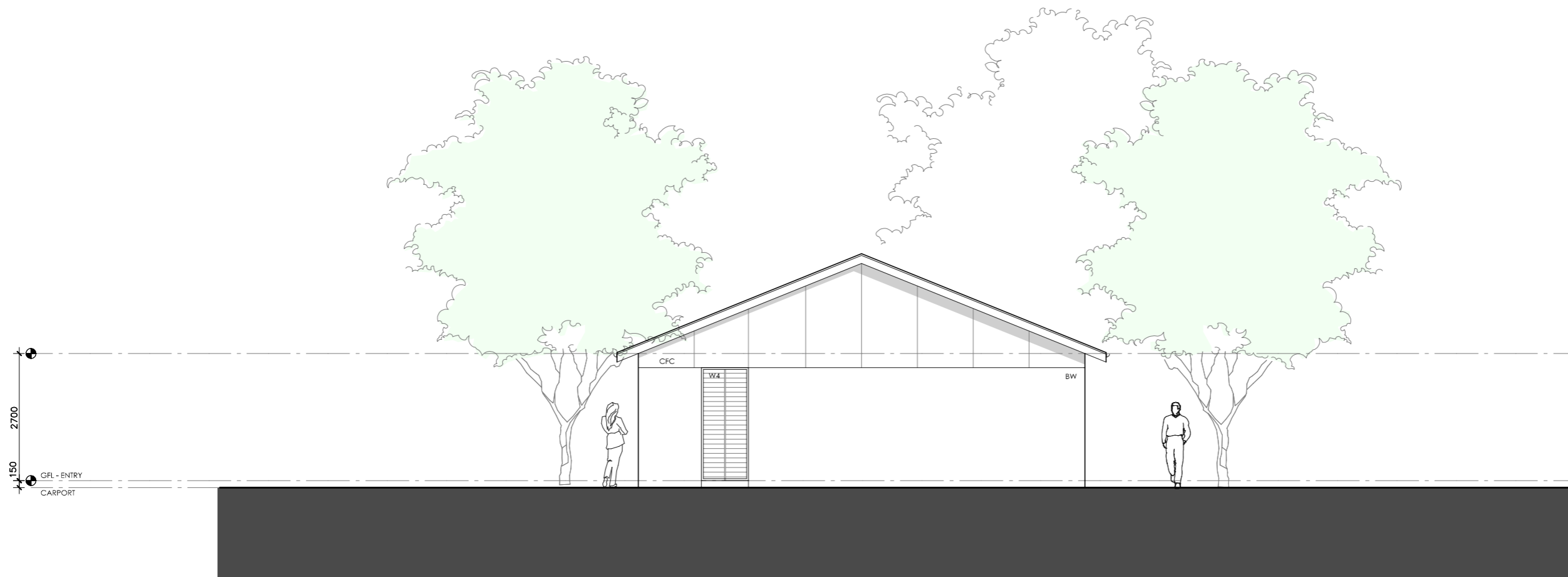


01 | NORTH ELEVATION

1:100

GREVILLEA HOUSE




<p>LEGEND</p> <p>BW FACE BRICK WALL TYPE & COLOUR TBC</p> <p>WB WEATHERBOARD CLADDING TYPE & COLOUR TBC</p> <p>CFC COMPRESSED FC SHEET ON TIMBER FRAME EXPRESSED JOINT AT EDGES INDICATED</p> <p>MF FOLDED METAL FASCIA COLOUR TBC</p> <p>ST STEEL WORK COLOUR TBC</p> <p>GD GARAGE DOOR COLOUR TBC</p> <p>AL ALUMINIUM COVER PLATE COLOUR TO MATCH WINDOW FRAMES</p>	<p>PROJECT</p>  <p>Australian Government</p>  <p>YourHome Australia's guide to environmentally sustainable homes</p>  <p>Design For Place</p> <p>DISCLAIMER</p> <p>This house plan is a guide only. It does not constitute legal or other professional advice. You should seek legal or other professional advice in relation to your specific circumstances before adopting any recommendation made within it e.g. advice on structural engineering or building certification requirements. The Commonwealth does not accept responsibility for the accuracy or completeness of this plan, its fitness for a particular purpose, or compliance with any regulatory requirements and standards. Further, the Commonwealth also disclaims liability, to the extent permitted by law, for any liabilities, losses, damages and costs arising from any reliance on the contents of this plan.</p>	<p>DESIGN</p> <p>Grevillea House</p> <p>DESIGNED FOR</p> <p>Cairns</p> <p>Technical drawings should be read with the Grevillea House Cairns 'Design Options' document which includes building specifications and rating information.</p>	<p>DETAILS</p> <p>Drawing title: Elevation-North</p> <p>Scale: 1:100</p> <p>Paper size: A3</p> <p>Drawing number: 5/11</p> <p>Date issued: June 2023</p> <p>Project stage: Preliminary</p>
--	---	--	---

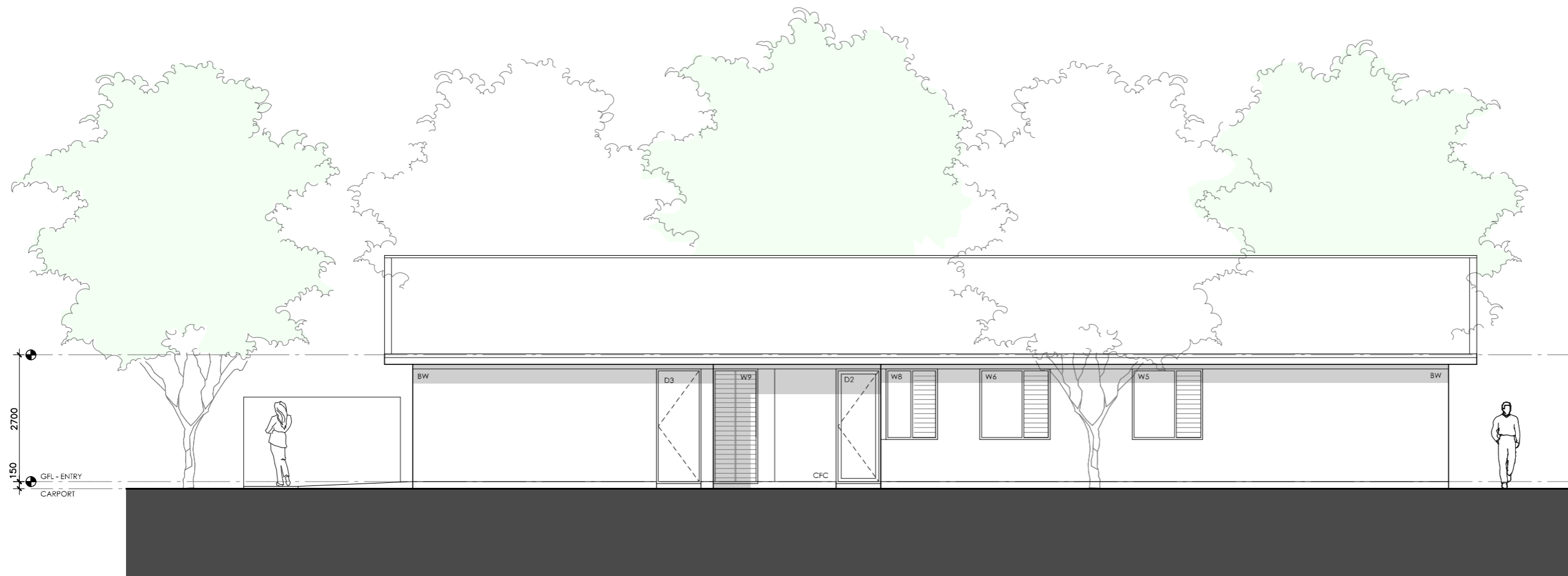


01 | SOUTH ELEVATION

1:100

GREVILLEA HOUSE




<p>LEGEND</p> <p>BW FACE BRICK WALL TYPE & COLOUR TBC</p> <p>WB WEATHERBOARD CLADDING TYPE & COLOUR TBC</p> <p>CFC COMPRESSED FC SHEET ON TIMBER FRAME EXPRESSED JOINT AT EDGES INDICATED</p> <p>MF FOLDED METAL FASCIA COLOUR TBC</p> <p>ST STEEL WORK COLOUR TBC</p> <p>GD GARAGE DOOR COLOUR TBC</p> <p>AL ALUMINIUM COVER PLATE COLOUR TO MATCH WINDOW FRAMES</p>	<p>PROJECT</p>  <p>Australian Government</p>  <p>YourHome Australia's guide to environmentally sustainable homes</p>  <p>Design For Place</p> <p>DISCLAIMER</p> <p>This house plan is a guide only. It does not constitute legal or other professional advice. You should seek legal or other professional advice in relation to your specific circumstances before adopting any recommendation made within it e.g. advice on structural engineering or building certification requirements. The Commonwealth does not accept responsibility for the accuracy or completeness of this plan, its fitness for a particular purpose, or compliance with any regulatory requirements and standards. Further, the Commonwealth also disclaims liability, to the extent permitted by law, for any liabilities, losses, damages and costs arising from any reliance on the contents of this plan.</p>	<p>DESIGN</p> <p>Grevillea House</p> <p>DESIGNED FOR</p> <p>Cairns</p> <p>Technical drawings should be read with the Grevillea House Cairns 'Design Options' document which includes building specifications and rating information.</p>	<p>DETAILS</p> <p>Drawing title: Elevation-South</p> <p>Scale: 1:100</p> <p>Paper size: A3</p> <p>Drawing number: 6/11</p> <p>Date issued: June 2023</p> <p>Project stage: Preliminary</p>
--	---	--	---

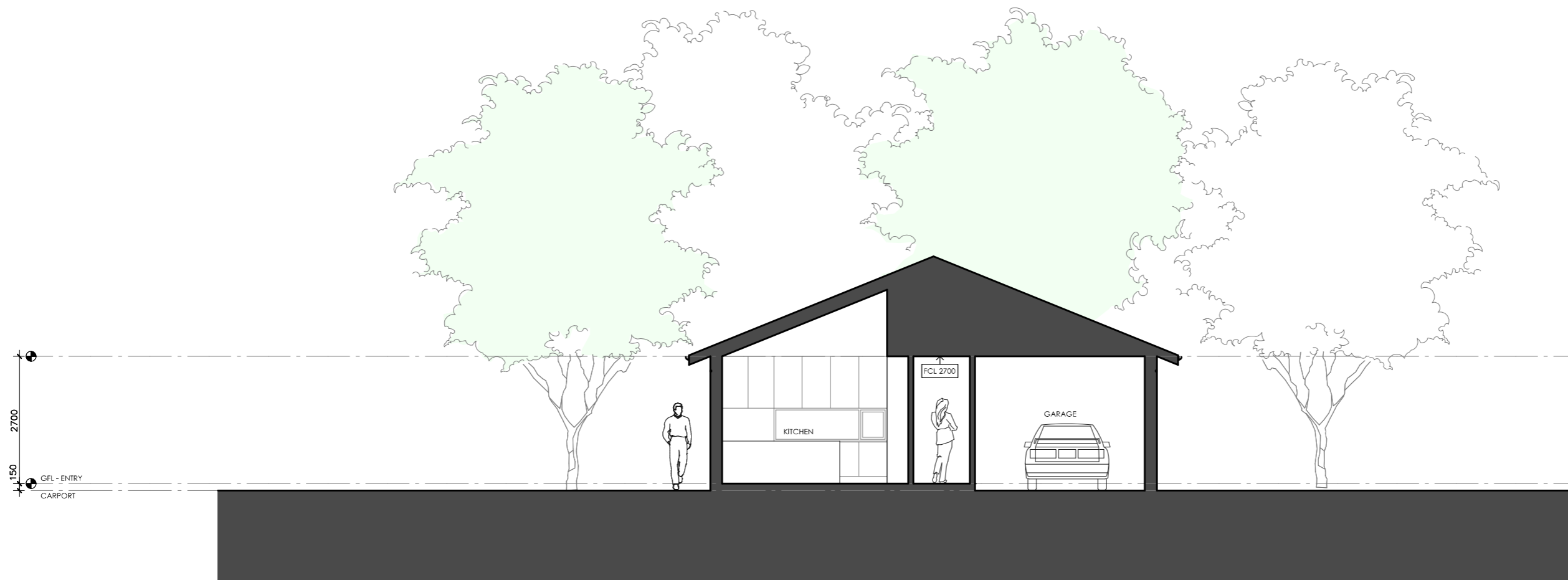


01 | WEST ELEVATION

1:100

GREVILLEA HOUSE




<p>LEGEND</p> <p>BW FACE BRICK WALL TYPE & COLOUR TBC</p> <p>WB WEATHERBOARD CLADDING TYPE & COLOUR TBC</p> <p>CFC COMPRESSED FC SHEET ON TIMBER FRAME EXPRESSED JOINT AT EDGES INDICATED</p> <p>MF FOLDED METAL FASCIA COLOUR TBC</p> <p>ST STEEL WORK COLOUR TBC</p> <p>GD GARAGE DOOR COLOUR TBC</p> <p>AL ALUMINIUM COVER PLATE COLOUR TO MATCH WINDOW FRAMES</p>	<p>PROJECT</p>  <p>Australian Government</p>  <p>YourHome Australia's guide to environmentally sustainable homes</p>  <p>Design For Place</p> <p>DISCLAIMER</p> <p>This house plan is a guide only. It does not constitute legal or other professional advice. You should seek legal or other professional advice in relation to your specific circumstances before adopting any recommendation made within it e.g. advice on structural engineering or building certification requirements. The Commonwealth does not accept responsibility for the accuracy or completeness of this plan, its fitness for a particular purpose, or compliance with any regulatory requirements and standards. Further, the Commonwealth also disclaims liability, to the extent permitted by law, for any liabilities, losses, damages and costs arising from any reliance on the contents of this plan.</p>	<p>DESIGN</p> <p>Grevillea House</p> <p>DESIGNED FOR</p> <p>Cairns</p> <p>Technical drawings should be read with the Grevillea House Cairns 'Design Options' document which includes building specifications and rating information.</p>	<p>DETAILS</p> <p>Drawing title: Elevation-West</p> <p>Scale: 1:100</p> <p>Paper size: A3</p> <p>Drawing number: 7/11</p> <p>Date issued: June 2023</p> <p>Project stage: Preliminary</p>
--	---	--	--

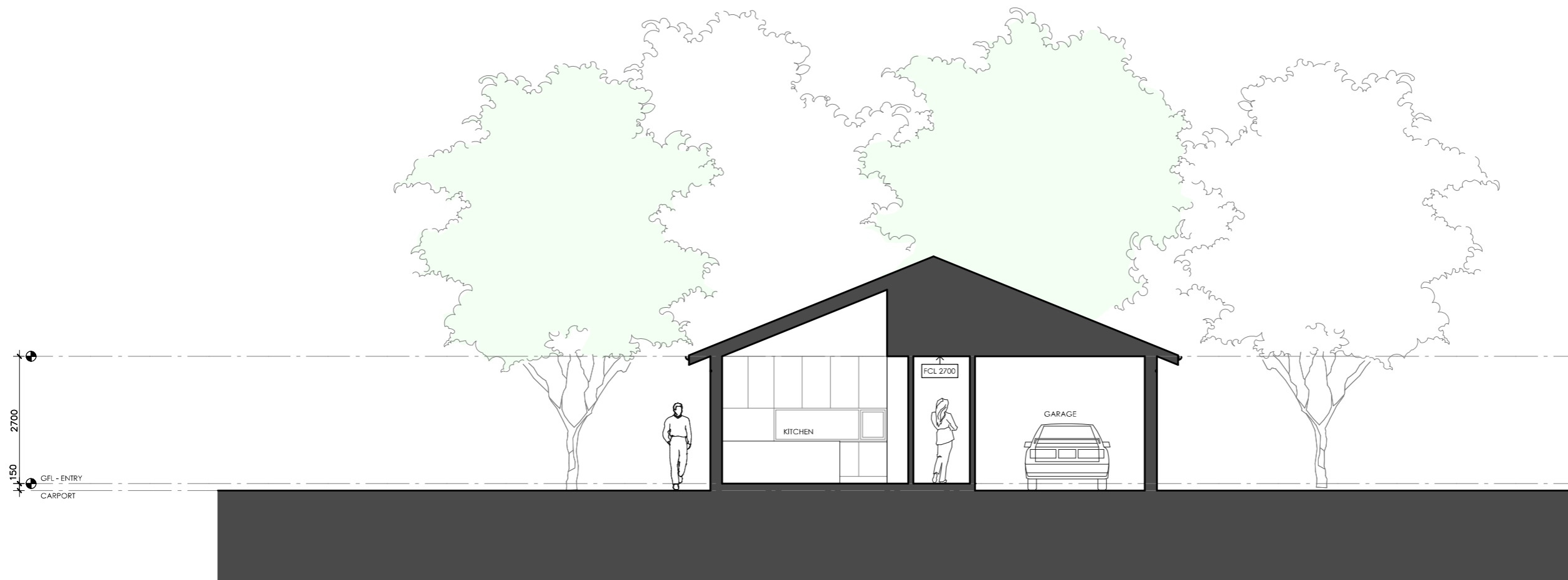


01 | SECTION AA

1:100




GREVILLEA HOUSE

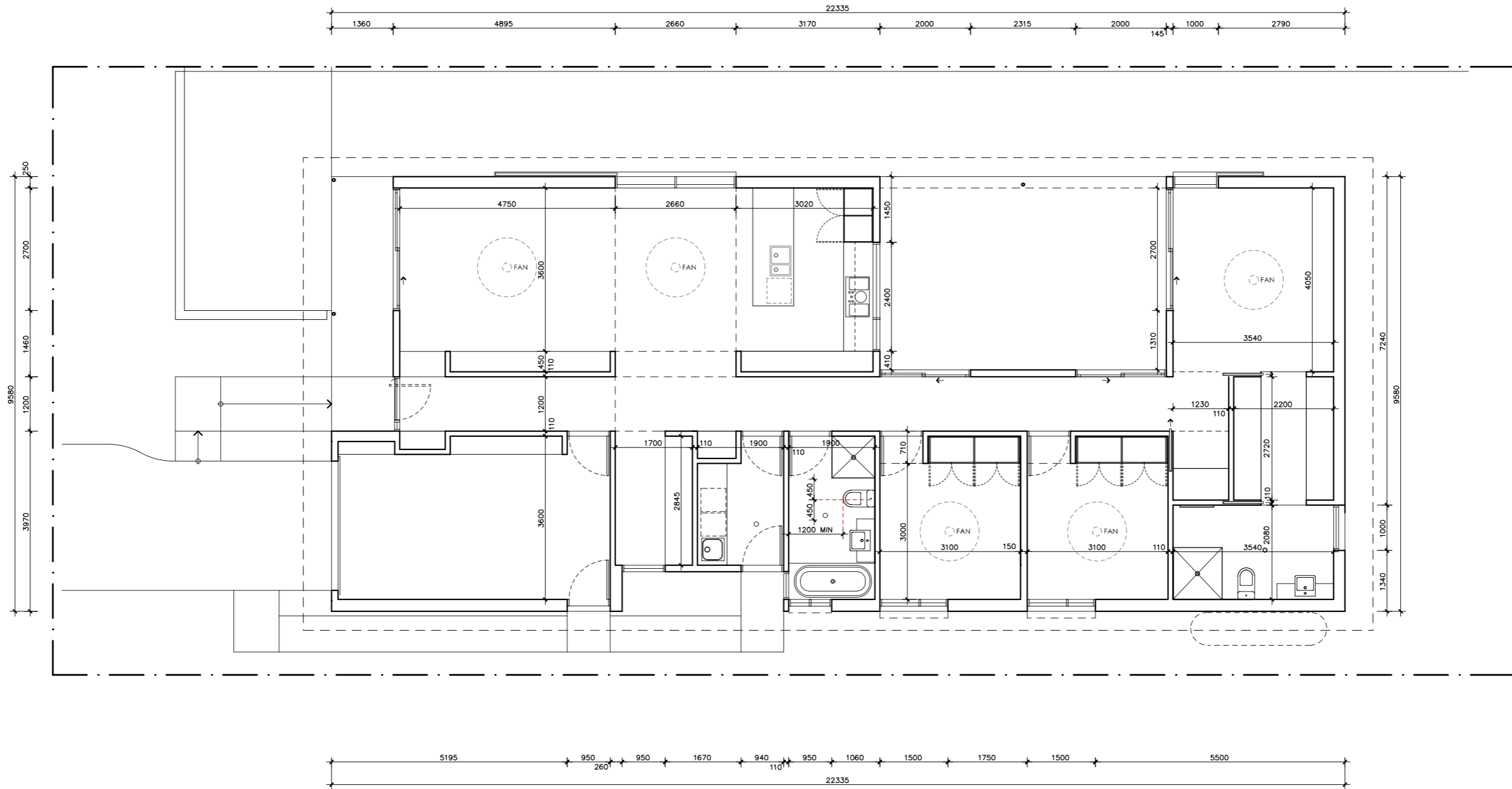
<p>LEGEND</p> <p>BW FACE BRICK WALL TYPE & COLOUR TBC</p> <p>WB WEATHERBOARD CLADDING TYPE & COLOUR TBC</p> <p>CFC COMPRESSED FC SHEET ON TIMBER FRAME EXPRESSED JOINT AT EDGES INDICATED</p> <p>MF FOLDED METAL FASCIA COLOUR TBC</p> <p>ST STEEL WORK COLOUR TBC</p> <p>GD GARAGE DOOR COLOUR TBC</p> <p>AL ALUMINIUM COVER PLATE COLOUR TO MATCH WINDOW FRAMES</p>	<p>PROJECT</p>  <p>Australian Government</p>  <p>YourHome Australia's guide to environmentally sustainable homes</p>  <p>Design For Place</p> <p>DISCLAIMER</p> <p>This house plan is a guide only. It does not constitute legal or other professional advice. You should seek legal or other professional advice in relation to your specific circumstances before adopting any recommendation made within it e.g. advice on structural engineering or building certification requirements. The Commonwealth does not accept responsibility for the accuracy or completeness of this plan, its fitness for a particular purpose, or compliance with any regulatory requirements and standards. Further, the Commonwealth also disclaims liability, to the extent permitted by law, for any liabilities, losses, damages and costs arising from any reliance on the contents of this plan.</p>	<p>DESIGN</p> <p>Grevillea House</p> <p>DESIGNED FOR</p> <p>Cairns</p> <p>Technical drawings should be read with the Grevillea House Cairns 'Design Options' document which includes building specifications and rating information.</p>	<p>DETAILS</p> <p>Drawing title: Section 1</p> <p>Scale: 1:100</p> <p>Paper size: A3</p> <p>Drawing number: 8/11</p> <p>Date issued: June 2023</p> <p>Project stage: Preliminary</p>
--	---	--	---







01 | SECTION AA
1:100

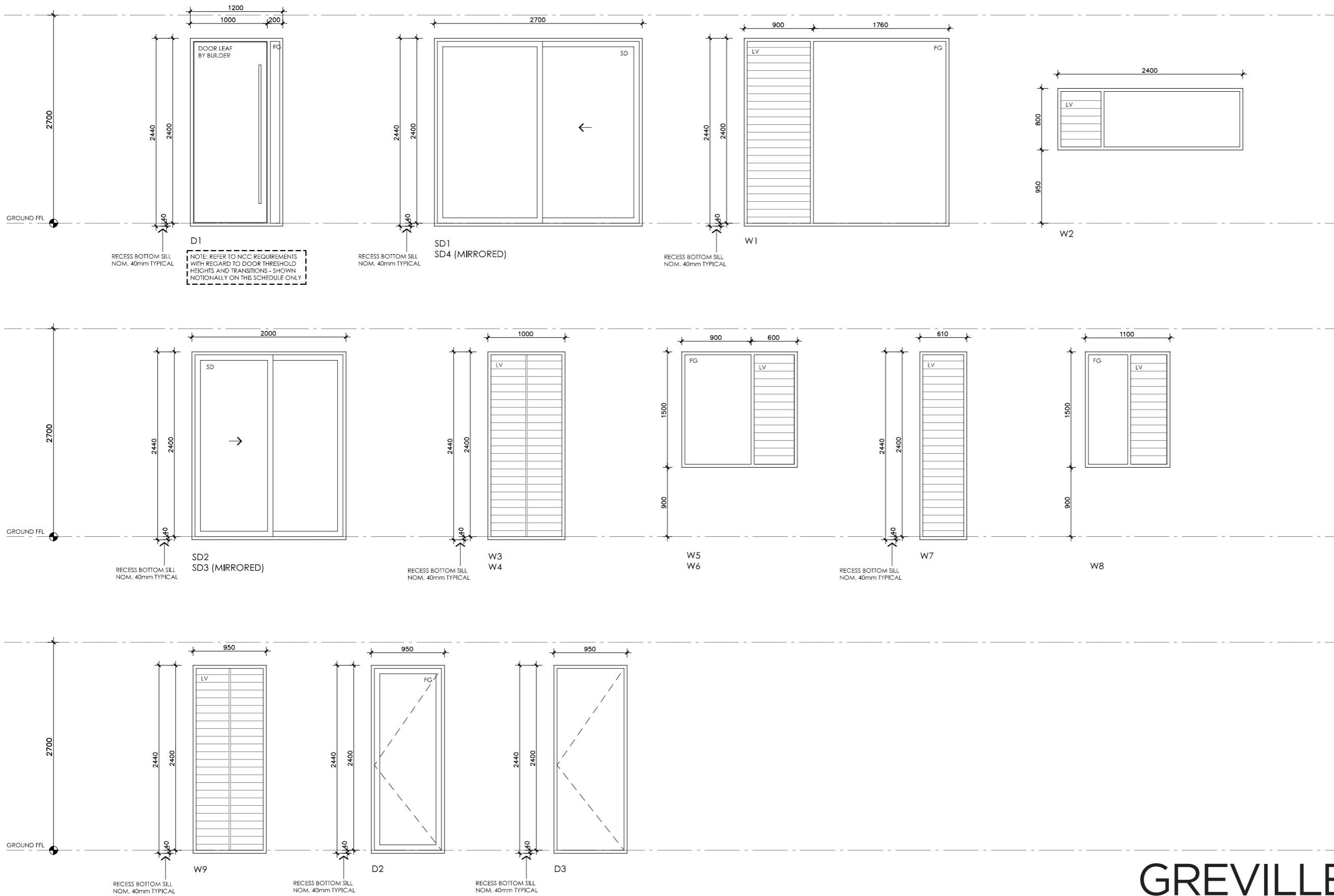
GREVILLEA HOUSE

<p>LEGEND</p> <p>BW FACE BRICK WALL TYPE & COLOUR TBC</p> <p>WB WEATHERBOARD CLADDING TYPE & COLOUR TBC</p> <p>CFC COMPRESSED FC SHEET ON TIMBER FRAME EXPRESSED JOINT AT EDGES INDICATED</p> <p>MF FOLDED METAL FASCIA COLOUR TBC</p> <p>ST STEEL WORK COLOUR TBC</p> <p>GD GARAGE DOOR COLOUR TBC</p> <p>AL ALUMINIUM COVER PLATE COLOUR TO MATCH WINDOW FRAMES</p>	<p>PROJECT</p>  <p>Australian Government</p>  <p>YourHome Australia's guide to environmentally sustainable homes</p>  <p>Design For Place</p> <p>DISCLAIMER</p> <p>This house plan is a guide only. It does not constitute legal or other professional advice. You should seek legal or other professional advice in relation to your specific circumstances before adopting any recommendation made within it e.g. advice on structural engineering or building certification requirements. The Commonwealth does not accept responsibility for the accuracy or completeness of this plan, its fitness for a particular purpose, or compliance with any regulatory requirements and standards. Further, the Commonwealth also disclaims liability, to the extent permitted by law, for any liabilities, losses, damages and costs arising from any reliance on the contents of this plan.</p>	<p>DESIGN</p> <p>Grevillea House</p> <p>DESIGNED FOR</p> <p>Cairns</p> <p>Technical drawings should be read with the Grevillea House Cairns 'Design Options' document which includes building specifications and rating information.</p>	<p>DETAILS</p> <p>Drawing title: Section 2</p> <p>Scale: 1:100</p> <p>Paper size: A3</p> <p>Drawing number: 9/11</p> <p>Date issued: June 2023</p> <p>Project stage: Preliminary</p>
--	---	--	---



GREVILLEA HOUSE

<p>LEGEND N/A</p>	<p>PROJECT</p>  <p>Australian Government</p>  <p>YourHome Australia's guide to environmentally sustainable homes</p>  <p>Design For Place</p>	<p>DESIGN Grevillea House</p> <p>DESIGNED FOR Cairns</p> <p>Technical drawings should be read with the Grevillea House Cairns 'Design Options' document which includes building specifications and rating information.</p>	<p>DETAILS Drawing title: Setout Plan Scale: 1:100 Paper size: A3 Drawing number: 10/11 Date issued: June 2023 Project stage: Preliminary</p> 
<p>DISCLAIMER</p> <p>This house plan is a guide only. It does not constitute legal or other professional advice. You should seek legal or other professional advice in relation to your specific circumstances before adopting any recommendation made within it e.g. advice on structural engineering or building certification requirements. The Commonwealth does not accept responsibility for the accuracy or completeness of this plan, its fitness for a particular purpose, or compliance with any regulatory requirements and standards. Further, the Commonwealth also disclaims liability, to the extent permitted by law, for any liabilities, losses, damages and costs arising from any reliance on the contents of this plan.</p>			



NOTES
 NOTE: FABRICATOR TO CONFIRM WHICH WINDOWS/DOORS REQUIRE LAMINATED SAFETY GLASS AND SPECIFY ACCORDINGLY. ALL GLAZING TO CODE REQUIREMENTS

NOTE: FRAME SECTION WIDTHS DIMENSIONED ARE NOTIONAL ONLY. FABRICATOR TO CONFIRM FRAME SECTION SIZE

NOTE: OVERALL WINDOW DIMENSIONS NOMINAL ONLY - CHECK MEASURE EXISTING OPENING ON SITE PRIOR TO ORDERING

NOTE: REFER TO SPECIFICATIONS DOCUMENT FOR FRAME TYPE, AND GLAZING PERFORMANCE VALUES (U-VALUE AND SHGC)

GREVILLEA HOUSE

LEGEND	
FG	FIXED GLASS GLAZING TO CODE REQUIREMENTS
LV	GLASS LOUVRES GLAZING TO CODE REQUIREMENTS
AW	AWNING SASH GLAZING TO CODE REQUIREMENTS
SD	SLIDING DOOR GLAZING TO CODE REQUIREMENTS
SSD	SLIDING STACKER DOOR GLAZING TO CODE REQUIREMENTS
SW	SLIDING WINDOW GLAZING TO CODE REQUIREMENTS

PROJECT



DISCLAIMER

This house plan is a guide only. It does not constitute legal or other professional advice. You should seek legal or other professional advice in relation to your specific circumstances before adopting any recommendation made within it e.g. advice on structural engineering or building certification requirements. The Commonwealth does not accept responsibility for the accuracy or completeness of this plan, its fitness for a particular purpose, or compliance with any regulatory requirements and standards. Further, the Commonwealth also disclaims liability, to the extent permitted by law, for any liabilities, losses, damages and costs arising from any reliance on the contents of this plan.

DESIGN

Grevillea House

**DESIGNED FOR
Cairns**

Technical drawings should be read with the Grevillea House Cairns 'Design Options' document which includes building specifications and rating information.

DETAILS

Drawing title: Window and Door Schedule

Scale: 1:50

Paper size: A3

Drawing number: 11/11

Date issued: June 2023

Project stage: Preliminary