



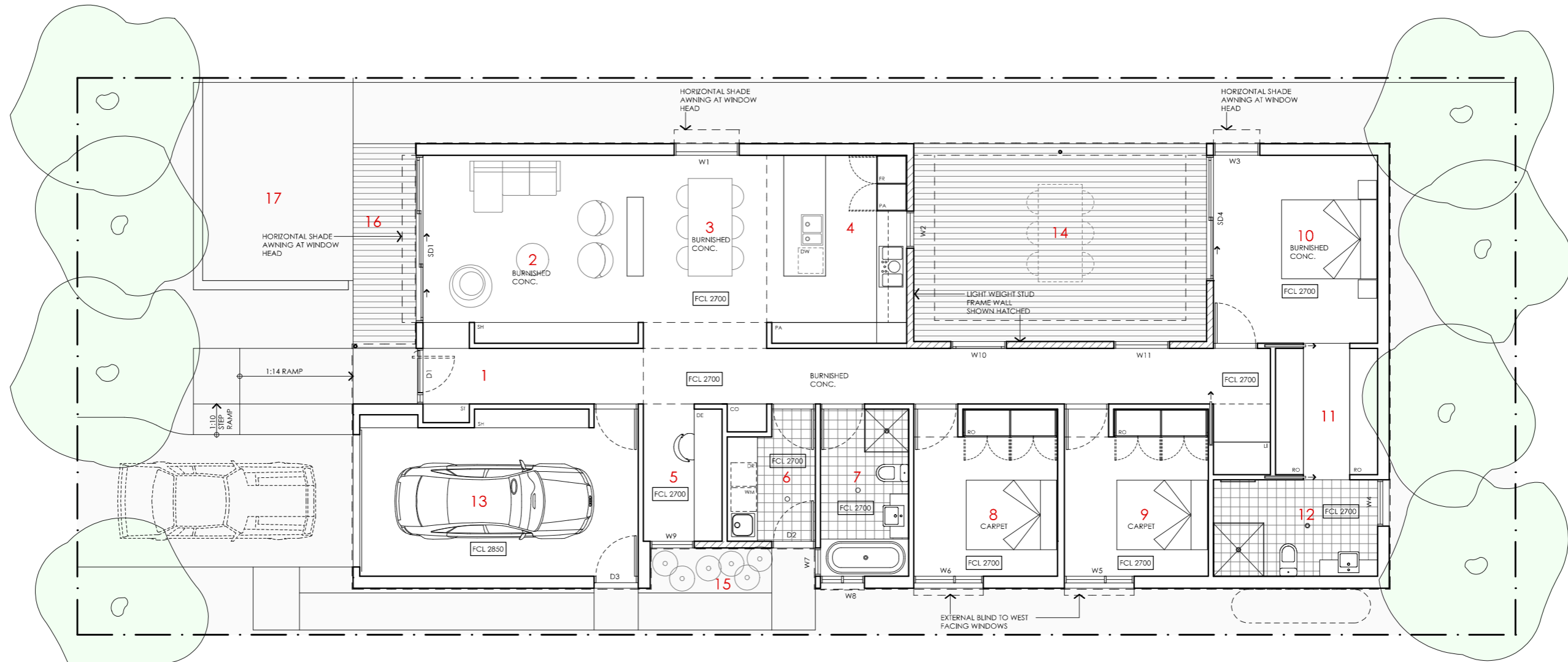


# GREVILLEA HOUSE

<p><b>LEGEND</b> N/A</p>	<p><b>PROJECT</b></p>  <p>Australian Government</p>  <p>YourHome Australia's guide to environmentally sustainable homes</p>  <p>Design For Place</p>	<p><b>DESIGN</b> Grevillea House</p> <p><b>DESIGNED FOR</b> Hobart</p>	<p><b>DETAILS</b> Drawing title: Site Plan Scale: 1:200 Paper size: A3 Drawing number: 1/11 Date issued: June 2023 Project stage: Preliminary</p>
<p><b>DISCLAIMER</b> This house plan is a guide only. It does not constitute legal or other professional advice. You should seek legal or other professional advice in relation to your specific circumstances before adopting any recommendation made within it e.g. advice on structural engineering or building certification requirements. The Commonwealth does not accept responsibility for the accuracy or completeness of this plan, its fitness for a particular purpose, or compliance with any regulatory requirements and standards. Further, the Commonwealth also disclaims liability, to the extent permitted by law, for any liabilities, losses, damages and costs arising from any reliance on the contents of this plan.</p>		<p>Technical drawings should be read with the Grevillea House Hobart 'Design Options' document which includes building specifications and rating information.</p>	

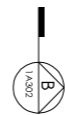
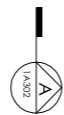


**KEY**

- 1 ENTRY
- 2 LIVING
- 3 DINING
- 4 KITCHEN
- 5 STUDY
- 6 LAUNDRY
- 7 BATHROOM
- 8 BEDROOM 3
- 9 BEDROOM 2
- 10 BEDROOM 1
- 11 WALK IN ROBE
- 12 ENSUITE
- 13 GARAGE
- 14 CENTRAL COURTYARD
- 15 GARDEN
- 16 FRONT DECK
- 17 NORTHERN COURTYARD

**LEGEND**

- FR FRIDGE
- PA PANTRY
- DW DISH WASHER
- RO ROBE
- DE DESK
- ST STORAGE CUPBOARD
- SH SHELVING
- WM WASHING MACHINE
- DR CLOTHES DRYER
- CO COAT CUPBOARD
- LI LINEN CUPBOARD
- FCL FINISHED CEILING LEVEL



# GREVILLEA HOUSE

**NOTES**

**AREA**  
 GROUND FLOOR LIVING 153 m<sup>2</sup>  
 GARAGE 22 m<sup>2</sup>  
**TOTAL GFA** 175 m<sup>2</sup>  
 GROUND FLOOR DECKS 30 m<sup>2</sup>  
 INDICATIVE BLOCK SIZE 372 m<sup>2</sup>

REFER TO NCC FOR SANITARY COMPARTMENT CIRCULATION, WALL REINFORCEMENT AND THRESHOLD/HOB REQUIREMENTS  
 DOOR OPENINGS, CORRIDOR WIDTHS AND THRESHOLDS, ENTRY RAMP GRADES AND COVER ETC TO NCC REQUIREMENTS  
 CONSTRUCTION NEAR BOUNDARY MUST COMPLY WITH NCC REQUIREMENTS - REVISE TO SUIT LOCAL REGULATIONS AND BUILDING ENVELOPES ETC  
 SETBACK FROM BOUNDARIES SHOWN INDICATIVELY ONLY - REVISE TO SUIT LOCAL REGULATIONS AND BUILDING ENVELOPES ETC  
 NOTE: GFA CALCULATIONS DO NOT INCLUDE DECKS, TERRACES, COURTYARDS, VERANDAH, VOIDS, STAIRS & BALCONIES @ UFL. NOTE THAT INTERNAL ROOM DIMENSIONS ARE NOMINAL ONLY.  
 CEILING INSULATION VALUES SPECIFIED EXTEND TO EAVES

**PROJECT**



**DISCLAIMER**

This house plan is a guide only. It does not constitute legal or other professional advice. You should seek legal or other professional advice in relation to your specific circumstances before adopting any recommendation made within it e.g. advice on structural engineering or building certification requirements. The Commonwealth does not accept responsibility for the accuracy or completeness of this plan, its fitness for a particular purpose, or compliance with any regulatory requirements and standards. Further, the Commonwealth also disclaims liability, to the extent permitted by law, for any liabilities, losses, damages and costs arising from any reliance on the contents of this plan.

**DESIGN**

**Grevillea House**

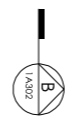
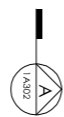
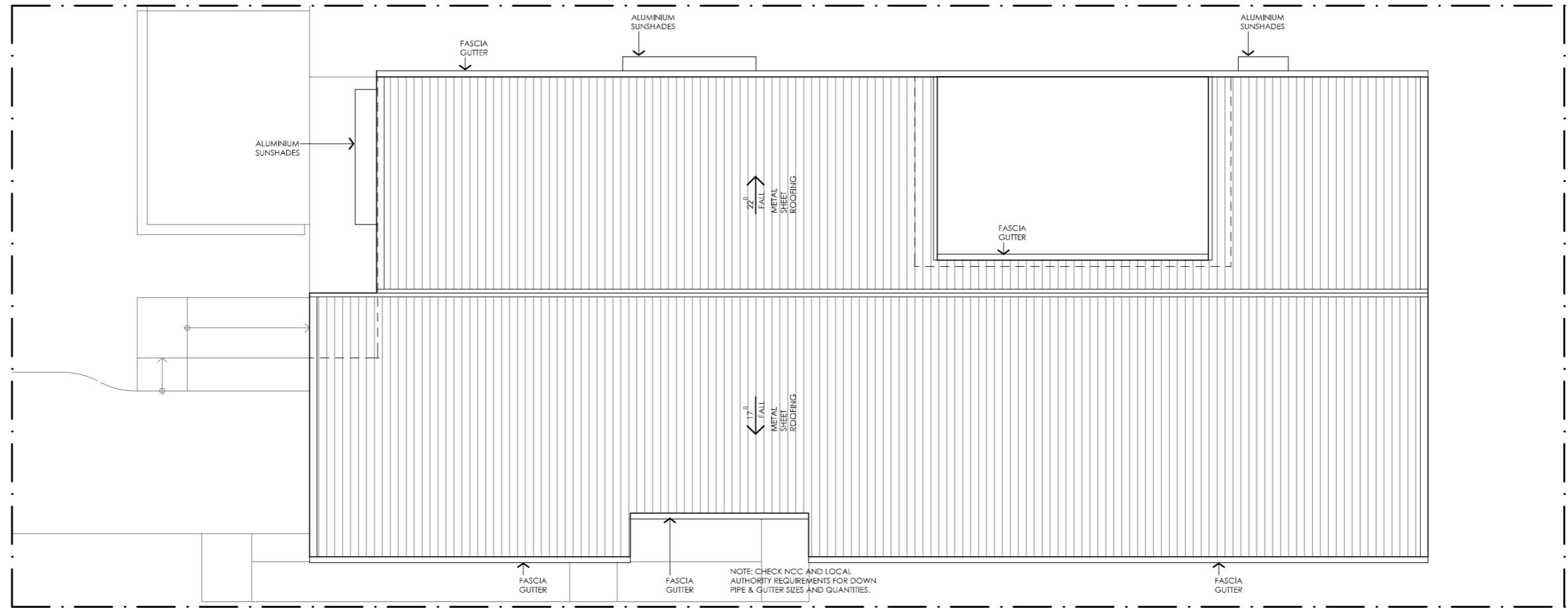
**DESIGNED FOR  
 Hobart**

Technical drawings should be read with the Grevillea House Hobart 'Design Options' document which includes building specifications and rating information.





**DETAILS**

**Drawing title:** Floor Plan  
**Scale:** 1:100  
**Paper size:** A3  
**Drawing number:** 2/11  
**Date issued:** June 2023  
**Project stage:** Preliminary








# GREVILLEA HOUSE

<p><b>LEGEND</b> N/A</p>	<p><b>PROJECT</b></p>  <p>Australian Government</p>  <p>YourHome Australia's guide to environmentally sustainable homes</p>  <p>Design For Place</p>	<p><b>DESIGN</b> Grevillea House</p> <p><b>DESIGNED FOR</b> Hobart</p> <p>Technical drawings should be read with the Grevillea House Hobart 'Design Options' document which includes building specifications and rating information.</p>	<p><b>DETAILS</b>  <b>Drawing title:</b> Roof Plan  <b>Scale:</b> 1:100  <b>Paper size:</b> A3  <b>Drawing number:</b> 3/11  <b>Date issued:</b> June 2023  <b>Project stage:</b> Preliminary</p> 
<p><b>DISCLAIMER</b></p> <p>This house plan is a guide only. It does not constitute legal or other professional advice. You should seek legal or other professional advice in relation to your specific circumstances before adopting any recommendation made within it e.g. advice on structural engineering or building certification requirements. The Commonwealth does not accept responsibility for the accuracy or completeness of this plan, its fitness for a particular purpose, or compliance with any regulatory requirements and standards. Further, the Commonwealth also disclaims liability, to the extent permitted by law, for any liabilities, losses, damages and costs arising from any reliance on the contents of this plan.</p>			



01 | EAST ELEVATION  
1:100

# GREVILLEA HOUSE

<p><b>LEGEND</b></p> <p>BW FACE BRICK WALL TYPE &amp; COLOUR TBC</p> <p>WB WEATHERBOARD CLADDING TYPE &amp; COLOUR TBC</p> <p>CFC COMPRESSED FC SHEET ON TIMBER FRAME EXPRESSED JOINT AT EDGES INDICATED</p> <p>MF FOLDED METAL FASCIA COLOUR TBC</p> <p>ST STEEL WORK COLOUR TBC</p> <p>GD GARAGE DOOR COLOUR TBC</p> <p>AL ALUMINIUM COVER PLATE COLOUR TO MATCH WINDOW FRAMES</p>	<p><b>PROJECT</b></p>  <p>Australian Government</p>  <p>YourHome Australia's guide to environmentally sustainable homes</p>  <p>Design For Place</p> <p><b>DESIGN</b> Grevillea House</p> <p><b>DESIGNED FOR</b> Hobart</p> <p>Technical drawings should be read with the Grevillea House Hobart 'Design Options' document which includes building specifications and rating information.</p> <p><b>DISCLAIMER</b></p> <p>This house plan is a guide only. It does not constitute legal or other professional advice. You should seek legal or other professional advice in relation to your specific circumstances before adopting any recommendation made within it e.g. advice on structural engineering or building certification requirements. The Commonwealth does not accept responsibility for the accuracy or completeness of this plan, its fitness for a particular purpose, or compliance with any regulatory requirements and standards. Further, the Commonwealth also disclaims liability, to the extent permitted by law, for any liabilities, losses, damages and costs arising from any reliance on the contents of this plan.</p>	<p><b>DETAILS</b></p> <p><b>Drawing title:</b> Elevation-East</p> <p><b>Scale:</b> 1:100</p> <p><b>Paper size:</b> A3</p> <p><b>Drawing number:</b> 4/11</p> <p><b>Date issued:</b> June 2023</p> <p><b>Project stage:</b> Preliminary</p>	
--	--	--	--



01 | NORTH ELEVATION

1:100

# GREVILLEA HOUSE

## LEGEND

- BW FACE BRICK WALL  
TYPE & COLOUR TBC
- WB WEATHERBOARD CLADDING  
TYPE & COLOUR TBC
- CFC COMPRESSED FC SHEET ON TIMBER FRAME  
EXPRESSED JOINT AT EDGES INDICATED
- MF FOLDED METAL FASCIA  
COLOUR TBC
- ST STEEL WORK  
COLOUR TBC
- GD GARAGE DOOR  
COLOUR TBC
- AL ALUMINIUM COVER PLATE  
COLOUR TO MATCH WINDOW FRAMES

## PROJECT



Australian Government



Design For Place

## DISCLAIMER

This house plan is a guide only. It does not constitute legal or other professional advice. You should seek legal or other professional advice in relation to your specific circumstances before adopting any recommendation made within it e.g. advice on structural engineering or building certification requirements. The Commonwealth does not accept responsibility for the accuracy or completeness of this plan, its fitness for a particular purpose, or compliance with any regulatory requirements and standards. Further, the Commonwealth also disclaims liability, to the extent permitted by law, for any liabilities, losses, damages and costs arising from any reliance on the contents of this plan.

## DESIGN

**Grevillea House**

**DESIGNED FOR  
Hobart**

Technical drawings should be read with the Grevillea House Hobart 'Design Options' document which includes building specifications and rating information.

## DETAILS

**Drawing title:** Elevation-North

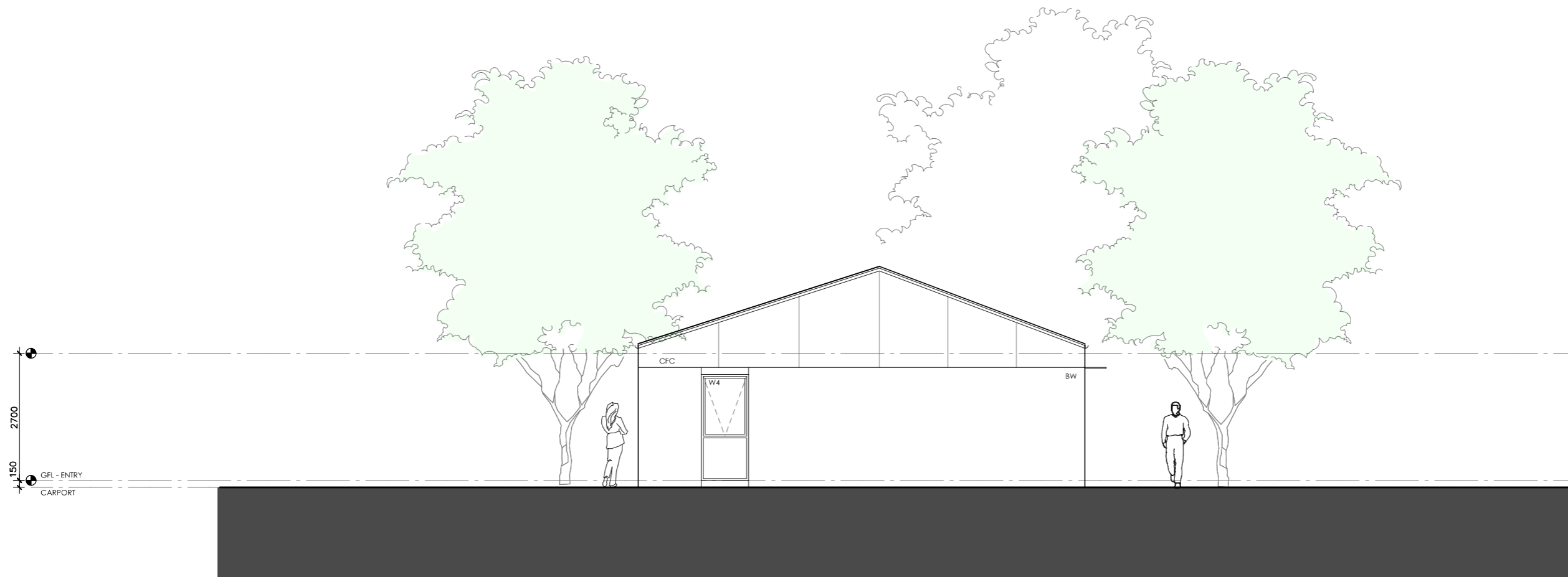
**Scale:** 1:100

**Paper size:** A3

**Drawing number:** 5/11

**Date issued:** June 2023




**Project stage:** Preliminary



01 | SOUTH ELEVATION

1:100




# GREVILLEA HOUSE

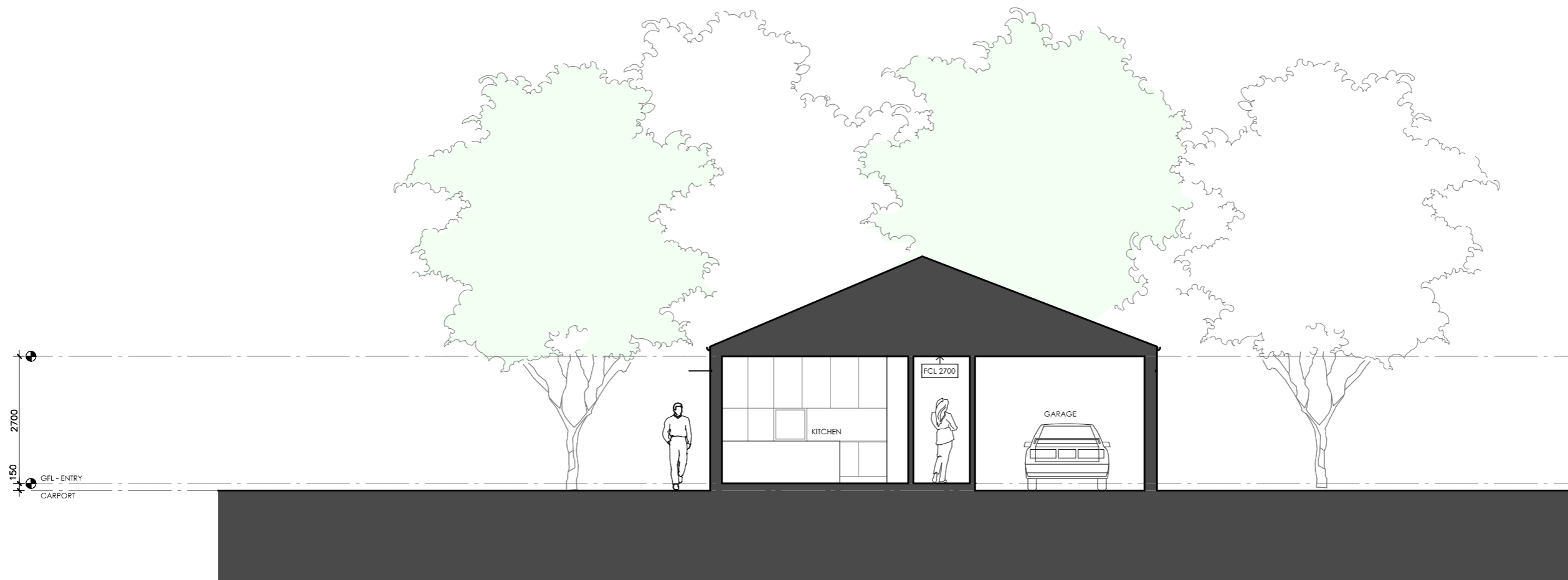
<p><b>LEGEND</b></p> <p>BW FACE BRICK WALL TYPE &amp; COLOUR TBC</p> <p>WB WEATHERBOARD CLADDING TYPE &amp; COLOUR TBC</p> <p>CFC COMPRESSED FC SHEET ON TIMBER FRAME EXPRESSED JOINT AT EDGES INDICATED</p> <p>MF FOLDED METAL FASCIA COLOUR TBC</p> <p>ST STEEL WORK COLOUR TBC</p> <p>GD GARAGE DOOR COLOUR TBC</p> <p>AL ALUMINIUM COVER PLATE COLOUR TO MATCH WINDOW FRAMES</p>	<p><b>PROJECT</b></p>  <p>Australian Government</p>  <p>YourHome Australia's guide to environmentally sustainable homes</p>  <p>Design For Place</p> <p><b>DISCLAIMER</b></p> <p>This house plan is a guide only. It does not constitute legal or other professional advice. You should seek legal or other professional advice in relation to your specific circumstances before adopting any recommendation made within it e.g. advice on structural engineering or building certification requirements. The Commonwealth does not accept responsibility for the accuracy or completeness of this plan, its fitness for a particular purpose, or compliance with any regulatory requirements and standards. Further, the Commonwealth also disclaims liability, to the extent permitted by law, for any liabilities, losses, damages and costs arising from any reliance on the contents of this plan.</p>	<p><b>DESIGN</b></p> <p><b>Grevillea House</b></p> <p><b>DESIGNED FOR</b></p> <p><b>Hobart</b></p> <p>Technical drawings should be read with the Grevillea House Hobart 'Design Options' document which includes building specifications and rating information.</p>	<p><b>DETAILS</b></p> <p><b>Drawing title:</b> Elevation-South</p> <p><b>Scale:</b> 1:100</p> <p><b>Paper size:</b> A3</p> <p><b>Drawing number:</b> 6/11</p> <p><b>Date issued:</b> June 2023</p> <p><b>Project stage:</b> Preliminary</p>
--	---	--	---



01 | WEST ELEVATION  
1:100




# GREVILLEA HOUSE

<p><b>LEGEND</b></p> <p>BW FACE BRICK WALL TYPE &amp; COLOUR TBC</p> <p>WB WEATHERBOARD CLADDING TYPE &amp; COLOUR TBC</p> <p>CFC COMPRESSED FC SHEET ON TIMBER FRAME EXPRESSED JOINT AT EDGES INDICATED</p> <p>MF FOLDED METAL FASCIA COLOUR TBC</p> <p>ST STEEL WORK COLOUR TBC</p> <p>GD GARAGE DOOR COLOUR TBC</p> <p>AL ALUMINIUM COVER PLATE COLOUR TO MATCH WINDOW FRAMES</p>	<p><b>PROJECT</b></p>  <p>Australian Government</p>  <p>YourHome Australia's guide to environmentally sustainable homes</p>  <p>Design For Place</p> <p><b>DISCLAIMER</b></p> <p>This house plan is a guide only. It does not constitute legal or other professional advice. You should seek legal or other professional advice in relation to your specific circumstances before adopting any recommendation made within it e.g. advice on structural engineering or building certification requirements. The Commonwealth does not accept responsibility for the accuracy or completeness of this plan, its fitness for a particular purpose, or compliance with any regulatory requirements and standards. Further, the Commonwealth also disclaims liability, to the extent permitted by law, for any liabilities, losses, damages and costs arising from any reliance on the contents of this plan.</p>	<p><b>DESIGN</b></p> <p><b>Grevillea House</b></p> <p><b>DESIGNED FOR</b></p> <p><b>Hobart</b></p> <p>Technical drawings should be read with the Grevillea House Hobart 'Design Options' document which includes building specifications and rating information.</p>	<p><b>DETAILS</b></p> <p><b>Drawing title:</b> Elevation-West</p> <p><b>Scale:</b> 1:100</p> <p><b>Paper size:</b> A3</p> <p><b>Drawing number:</b> 7/11</p> <p><b>Date issued:</b> June 2023</p> <p><b>Project stage:</b> Preliminary</p>
--	---	--	--

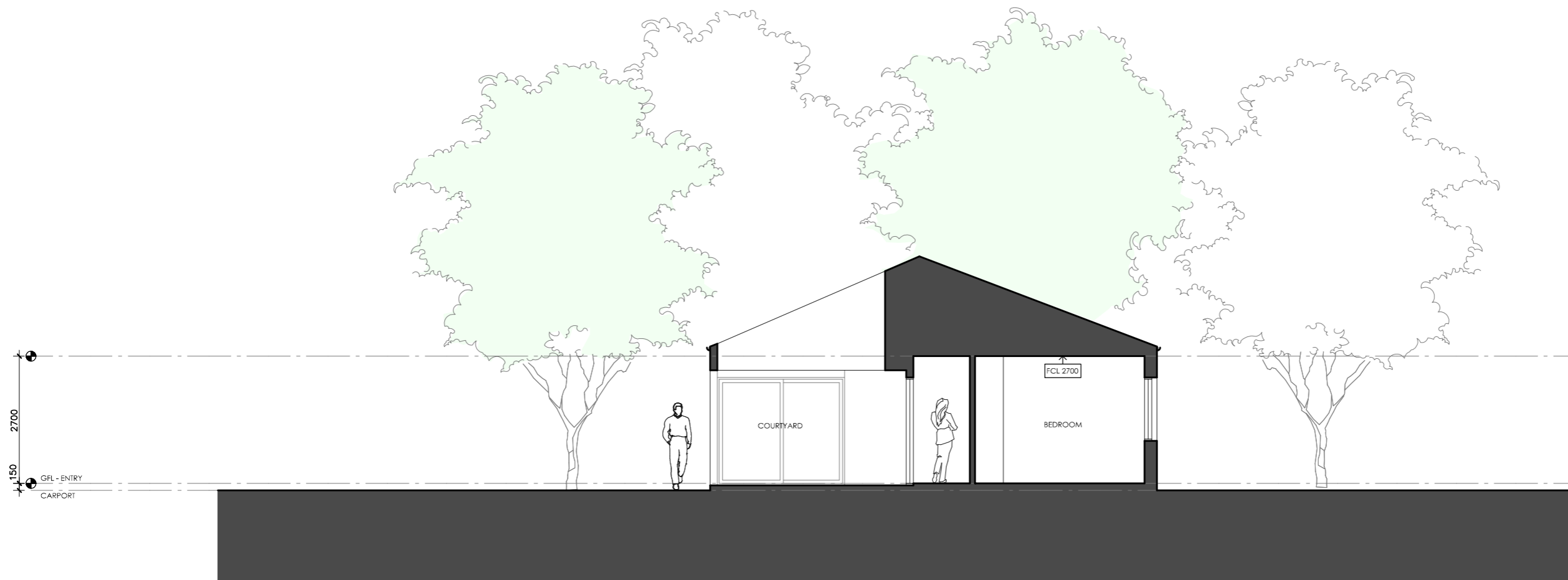


01 | SECTION AA  
1:100

# GREVILLEA HOUSE




<p><b>LEGEND</b></p> <p>BW FACE BRICK WALL TYPE &amp; COLOUR TBC</p> <p>WB WEATHERBOARD CLADDING TYPE &amp; COLOUR TBC</p> <p>CFC COMPRESSED FC SHEET ON TIMBER FRAME EXPRESSED JOINT AT EDGES INDICATED</p> <p>MF FOLDED METAL FASCIA COLOUR TBC</p> <p>ST STEEL WORK COLOUR TBC</p> <p>GD GARAGE DOOR COLOUR TBC</p> <p>AL ALUMINIUM COVER PLATE COLOUR TO MATCH WINDOW FRAMES</p>	<p><b>PROJECT</b></p>  <p>Australian Government</p>  <p>YourHome Australia's guide to environmentally sustainable homes</p>  <p>Design For Place</p> <p><b>DISCLAIMER</b></p> <p>This house plan is a guide only. It does not constitute legal or other professional advice. You should seek legal or other professional advice in relation to your specific circumstances before adopting any recommendation made within it e.g. advice on structural engineering or building certification requirements. The Commonwealth does not accept responsibility for the accuracy or completeness of this plan, its fitness for a particular purpose, or compliance with any regulatory requirements and standards. Further, the Commonwealth also disclaims liability, to the extent permitted by law, for any liabilities, losses, damages and costs arising from any reliance on the contents of this plan.</p>	<p><b>DESIGN</b></p> <p><b>Grevillea House</b></p> <p><b>DESIGNED FOR</b></p> <p><b>Hobart</b></p> <p>Technical drawings should be read with the Grevillea House Hobart 'Design Options' document which includes building specifications and rating information.</p>	<p><b>DETAILS</b></p> <p><b>Drawing title:</b> Section 1</p> <p><b>Scale:</b> 1:100</p> <p><b>Paper size:</b> A3</p> <p><b>Drawing number:</b> 8/11</p> <p><b>Date issued:</b> June 2023</p> <p><b>Project stage:</b> Preliminary</p>
--	---	--	---

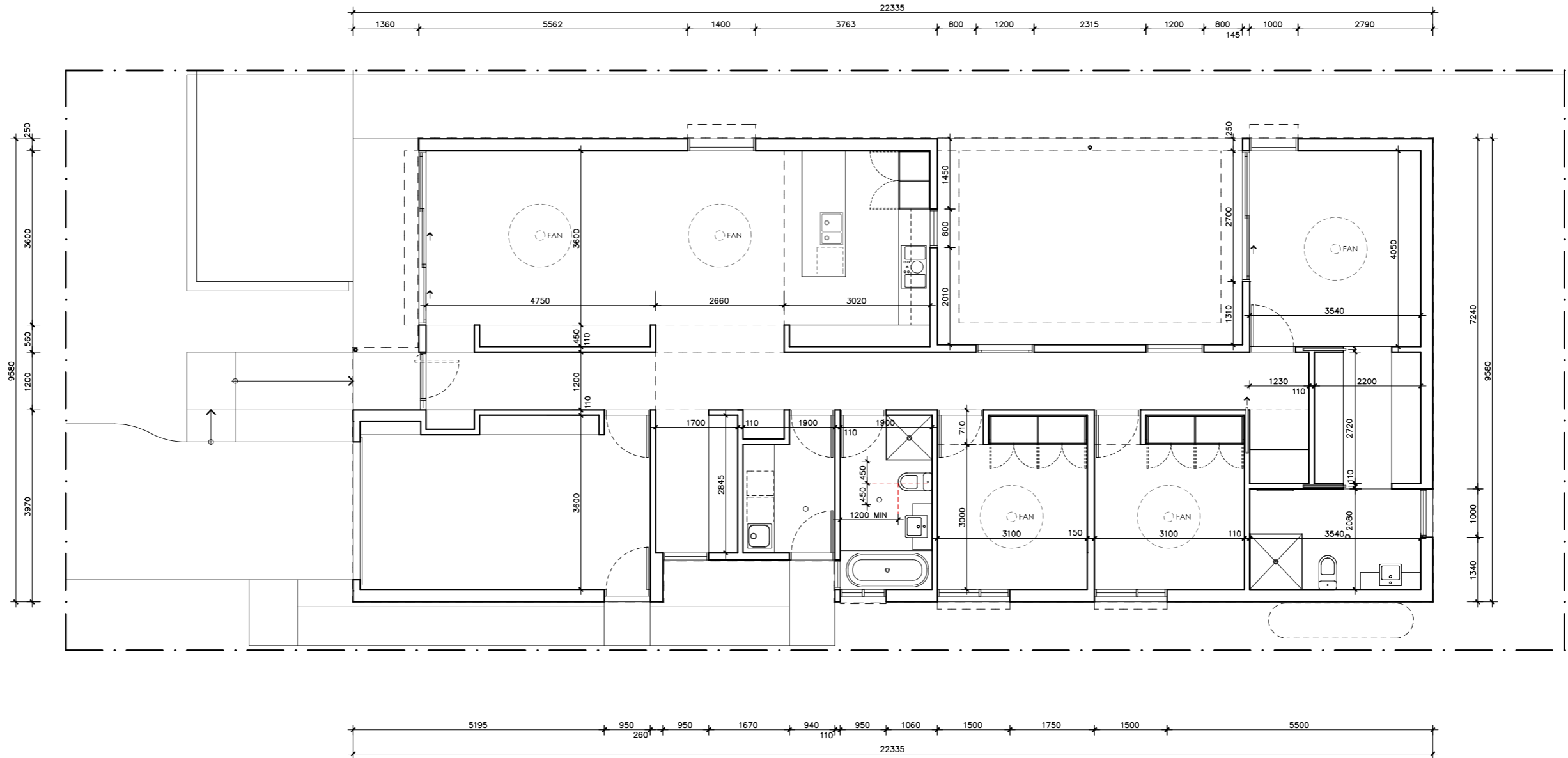




01 | SECTION BB  
1:100

# GREVILLEA HOUSE

<p><b>LEGEND</b></p> <p>BW FACE BRICK WALL TYPE &amp; COLOUR TBC</p> <p>WB WEATHERBOARD CLADDING TYPE &amp; COLOUR TBC</p> <p>CFC COMPRESSED FC SHEET ON TIMBER FRAME EXPRESSED JOINT AT EDGES INDICATED</p> <p>MF FOLDED METAL FASCIA COLOUR TBC</p> <p>ST STEEL WORK COLOUR TBC</p> <p>GD GARAGE DOOR COLOUR TBC</p> <p>AL ALUMINIUM COVER PLATE COLOUR TO MATCH WINDOW FRAMES</p>	<p><b>PROJECT</b></p>  <p>Australian Government</p>  <p>YourHome Australia's guide to environmentally sustainable homes</p>  <p>Design For Place</p> <p><b>DISCLAIMER</b></p> <p>This house plan is a guide only. It does not constitute legal or other professional advice. You should seek legal or other professional advice in relation to your specific circumstances before adopting any recommendation made within it e.g. advice on structural engineering or building certification requirements. The Commonwealth does not accept responsibility for the accuracy or completeness of this plan, its fitness for a particular purpose, or compliance with any regulatory requirements and standards. Further, the Commonwealth also disclaims liability, to the extent permitted by law, for any liabilities, losses, damages and costs arising from any reliance on the contents of this plan.</p>	<p><b>DESIGN</b></p> <p><b>Grevillea House</b></p> <p><b>DESIGNED FOR</b></p> <p><b>Hobart</b></p> <p>Technical drawings should be read with the Grevillea House Hobart 'Design Options' document which includes building specifications and rating information.</p>	<p><b>DETAILS</b></p> <p><b>Drawing title:</b> Section 2</p> <p><b>Scale:</b> 1:100</p> <p><b>Paper size:</b> A3</p> <p><b>Drawing number:</b> 9/11</p> <p><b>Date issued:</b> June 2023</p> <p><b>Project stage:</b> Preliminary</p>
--	---	--	---



# GREVILLEA HOUSE

## LEGEND

N/A

## PROJECT



Australian Government



Design For Place

## DESIGN

Grevillea House

## DESIGNED FOR

Hobart

Technical drawings should be read with the Grevillea House Hobart 'Design Options' document which includes building specifications and rating information.

## DETAILS

**Drawing title:** Setout Plan

**Scale:** 1:100

**Paper size:** A3

**Drawing number:** 10/11

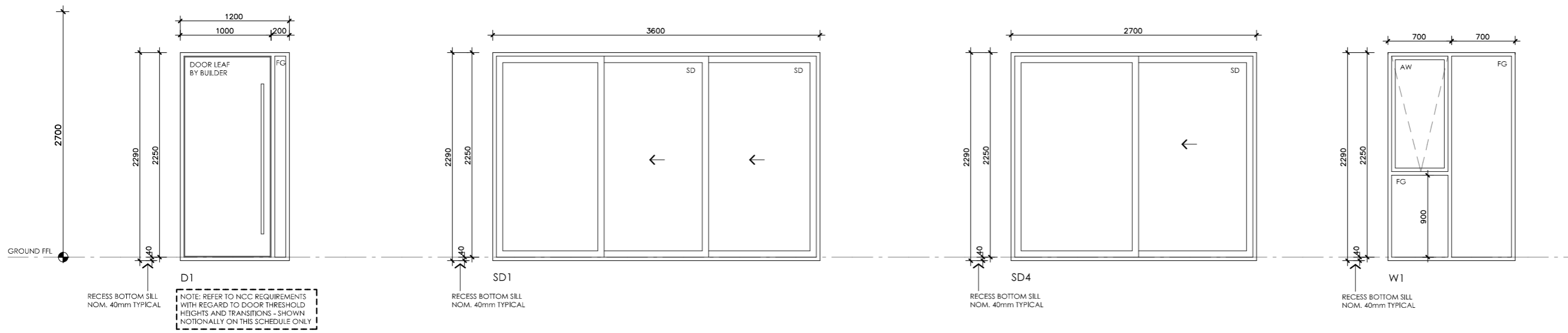
**Date issued:** June 2023

**Project stage:** Preliminary



## DISCLAIMER

This house plan is a guide only. It does not constitute legal or other professional advice. You should seek legal or other professional advice in relation to your specific circumstances before adopting any recommendation made within it e.g. advice on structural engineering or building certification requirements. The Commonwealth does not accept responsibility for the accuracy or completeness of this plan, its fitness for a particular purpose, or compliance with any regulatory requirements and standards. Further, the Commonwealth also disclaims liability, to the extent permitted by law, for any liabilities, losses, damages and costs arising from any reliance on the contents of this plan.



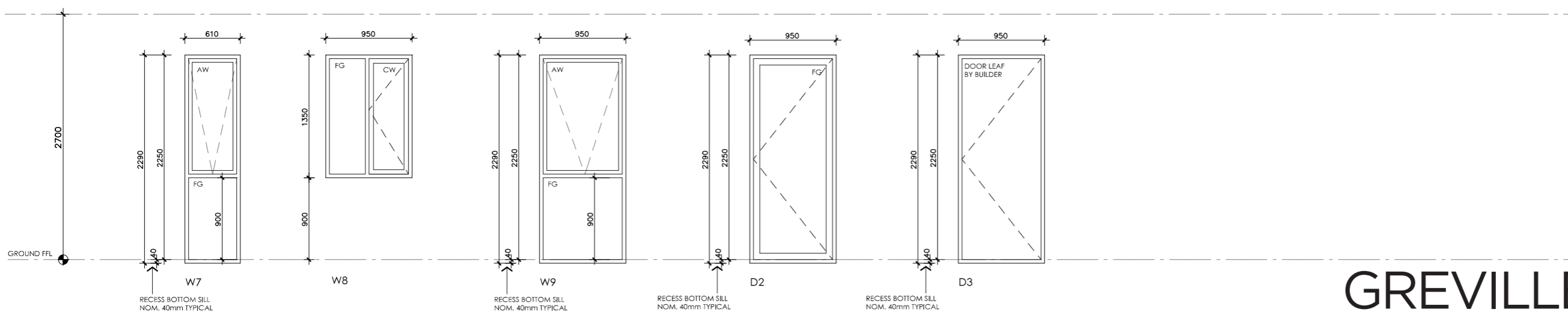
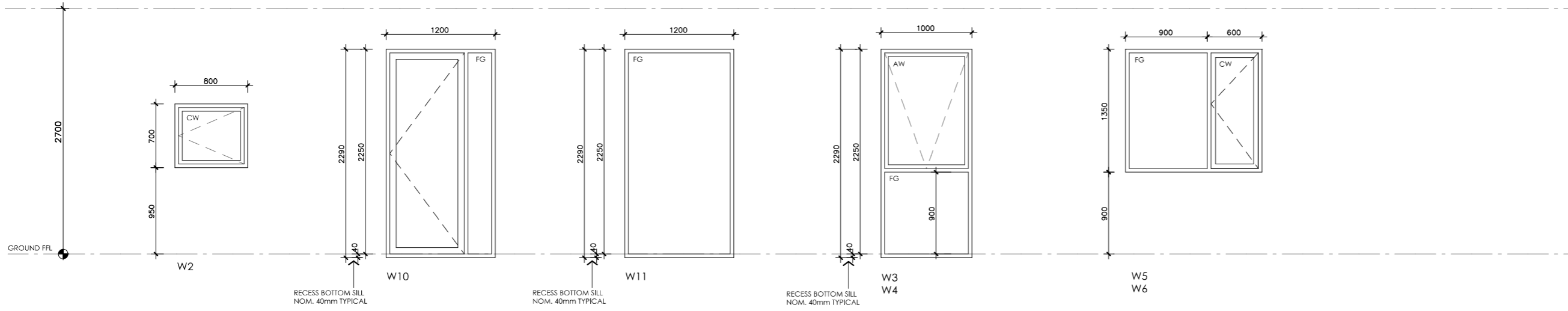
NOTE: REFER TO NCC REQUIREMENTS WITH REGARD TO DOOR THRESHOLD HEIGHTS AND TRANSITIONS - SHOWN NOTIONALLY ON THIS SCHEDULE ONLY

NOTES  
NOTE: FABRICATOR TO CONFIRM WHICH WINDOWS/DOORS REQUIRE LAMINATED SAFETY GLASS AND SPECIFY ACCORDINGLY. ALL GLAZING TO CODE REQUIREMENTS

NOTE: FRAME SECTION WIDTHS DIMENSIONED ARE NOTIONAL ONLY. FABRICATOR TO CONFIRM FRAME SECTION SIZE

NOTE: OVERALL WINDOW DIMENSIONS NOMINAL ONLY - CHECK MEASURE EXISTING OPENING ON SITE PRIOR TO ORDERING

NOTE: REFER TO SPECIFICATIONS DOCUMENT FOR FRAME TYPE, AND GLAZING PERFORMANCE VALUES (U-VALUE AND SHGC)



# GREVILLEA HOUSE

LEGEND	
FG	FIXED GLASS GLAZING TO CODE REQUIREMENTS
CW	CASEMENT SASH GLAZING TO CODE REQUIREMENTS
AW	AWNING SASH GLAZING TO CODE REQUIREMENTS
SD	SLIDING DOOR GLAZING TO CODE REQUIREMENTS
SSD	SLIDING STACKER DOOR GLAZING TO CODE REQUIREMENTS
SW	SLIDING WINDOW GLAZING TO CODE REQUIREMENTS

## PROJECT



## DISCLAIMER

This house plan is a guide only. It does not constitute legal or other professional advice. You should seek legal or other professional advice in relation to your specific circumstances before adopting any recommendation made within it e.g. advice on structural engineering or building certification requirements. The Commonwealth does not accept responsibility for the accuracy or completeness of this plan, its fitness for a particular purpose, or compliance with any regulatory requirements and standards. Further, the Commonwealth also disclaims liability, to the extent permitted by law, for any liabilities, losses, damages and costs arising from any reliance on the contents of this plan.

## DESIGN

**Grevillea House**

## DESIGNED FOR

**Hobart**

Technical drawings should be read with the Grevillea House Hobart 'Design Options' document which includes building specifications and rating information.

## DETAILS

**Drawing title:** Site Plan

**Scale:** 1:50

**Paper size:** A3

**Drawing number:** 11/11

**Date issued:** June 2023

**Project stage:** Preliminary