



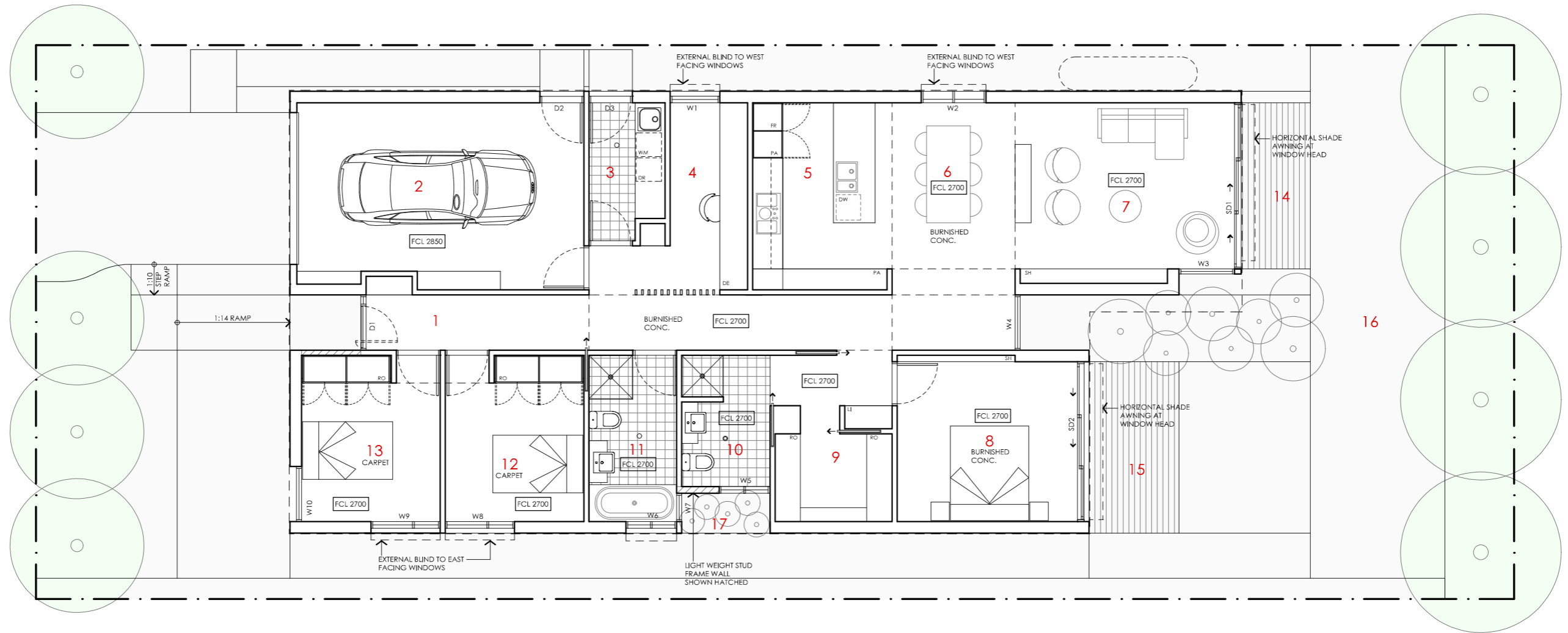


# MALLEE HOUSE

<p><b>LEGEND</b> N/A</p>	<p><b>PROJECT</b></p>  <p>Australian Government</p>  <p>YourHome Australia's guide to environmentally sustainable homes</p>  <p>Design For Place</p>	<p><b>DESIGN</b> Mallee House</p> <p><b>DESIGNED FOR</b> Canberra</p> <p>Technical drawings should be read with the Mallee House Canberra 'Design Options' document which includes building specifications and rating information.</p>	<p><b>DETAILS</b>  <b>Drawing title:</b> Site Plan  <b>Scale:</b> 1:200  <b>Paper size:</b> A3  <b>Drawing number:</b> 1/11  <b>Date issued:</b> June 2023  <b>Project stage:</b> Preliminary</p> 
<p><b>DISCLAIMER</b></p> <p>This house plan is a guide only. It does not constitute legal or other professional advice. You should seek legal or other professional advice in relation to your specific circumstances before adopting any recommendation made within it e.g. advice on structural engineering or building certification requirements. The Commonwealth does not accept responsibility for the accuracy or completeness of this plan, its fitness for a particular purpose, or compliance with any regulatory requirements and standards. Further, the Commonwealth also disclaims liability, to the extent permitted by law, for any liabilities, losses, damages and costs arising from any reliance on the contents of this plan.</p>			

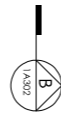
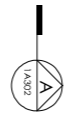


**KEY**

- 1 ENTRY
- 2 GARAGE
- 3 LAUNDRY
- 4 STUDY
- 5 KITCHEN
- 6 DINING
- 7 LIVING
- 8 BEDROOM 1
- 9 WALK IN ROBE
- 10 ENSUITE
- 11 BATHROOM
- 12 BEDROOM 2
- 13 BEDROOM 3
- 14 LIVING ROOM DECK
- 15 BEDROOM 1 DECK
- 16 NORTHERN YARD
- 17 SOLAR COURT

**LEGEND**

- FR FRIDGE
- PA PANTRY
- DW DISH WASHER
- RO ROBE
- DE DESK
- ST STORAGE CUPBOARD
- SH SHELVE
- WM WASHING MACHINE
- DR CLOTHES DRYER
- CO COAT CUPBOARD
- LI LINEN CUPBOARD
- FCL FINISHED CEILING LEVEL



# MALLEE HOUSE

**NOTES**

**AREA**  
 GROUND FLOOR LIVING 148 m<sup>2</sup>  
 GARAGE 26 m<sup>2</sup>  
**TOTAL GFA** 174 m<sup>2</sup>  
 GROUND FLOOR DECKS 30 m<sup>2</sup>  
 INDICATIVE BLOCK SIZE 384 m<sup>2</sup>

REFER TO NCC FOR SANITARY COMPARTMENT CIRCULATION, WALL REINFORCEMENT AND THRESHOLD/HOB REQUIREMENTS  
 DOOR OPENINGS, CORRIDOR WIDTHS AND THRESHOLDS, ENTRY RAMP GRADES AND COVER ETC TO NCC REQUIREMENTS  
 CONSTRUCTION NEAR BOUNDARY MUST COMPLY WITH NCC REQUIREMENTS - REVISE TO SUIT LOCAL REGULATIONS AND BUILDING ENVELOPES ETC  
 SETBACK FROM BOUNDARIES SHOWN INDICATIVELY ONLY - REVISE TO SUIT LOCAL REGULATIONS AND BUILDING ENVELOPES ETC  
 NOTE: GFA CALCULATIONS DO NOT INCLUDE DECKS, TERRACES, COURTYARDS, VERANDAH, VOIDS, STAIRS & BALCONIES @ UFL. NOTE THAT INTERNAL ROOM DIMENSIONS ARE NOMINAL ONLY.  
 CEILING INSULATION VALUES SPECIFIED EXTEND TO EAVES

**PROJECT**



**DISCLAIMER**

This house plan is a guide only. It does not constitute legal or other professional advice. You should seek legal or other professional advice in relation to your specific circumstances before adopting any recommendation made within it e.g. advice on structural engineering or building certification requirements. The Commonwealth does not accept responsibility for the accuracy or completeness of this plan, its fitness for a particular purpose, or compliance with any regulatory requirements and standards. Further, the Commonwealth also disclaims liability, to the extent permitted by law, for any liabilities, losses, damages and costs arising from any reliance on the contents of this plan.

**DESIGN**

**Mallee House**

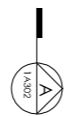
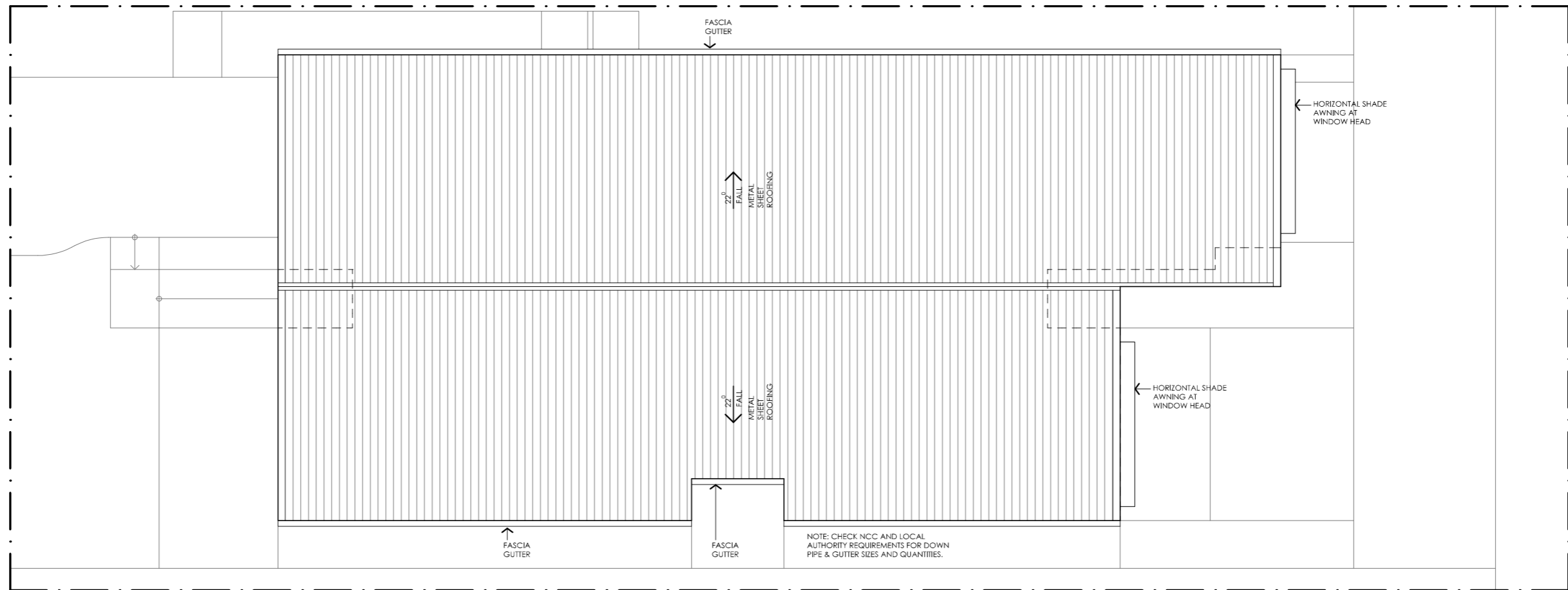
**DESIGNED FOR  
 Canberra**

Technical drawings should be read with the Mallee House Canberra 'Design Options' document which includes building specifications and rating information.





**DETAILS**

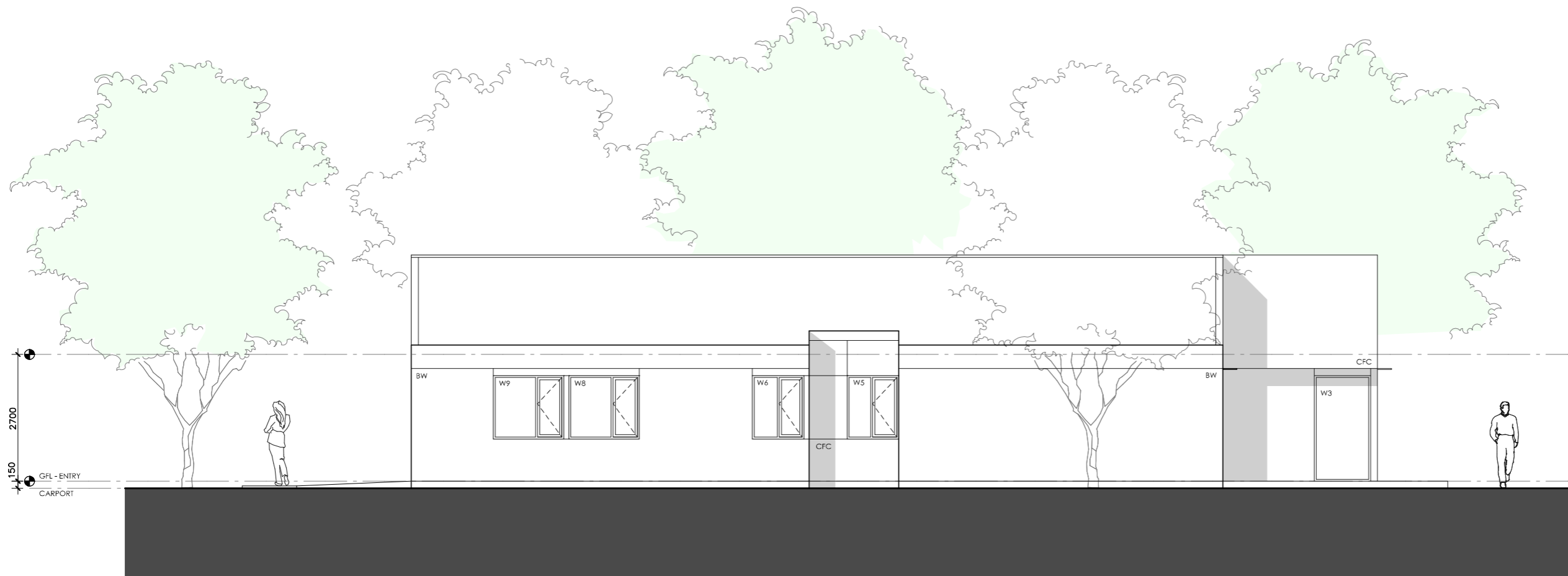
**Drawing title:** Floor Plan  
**Scale:** 1:100  
**Paper size:** A3  
**Drawing number:** 2/11  
**Date issued:** June 2023  
**Project stage:** Preliminary








# MALLEE HOUSE

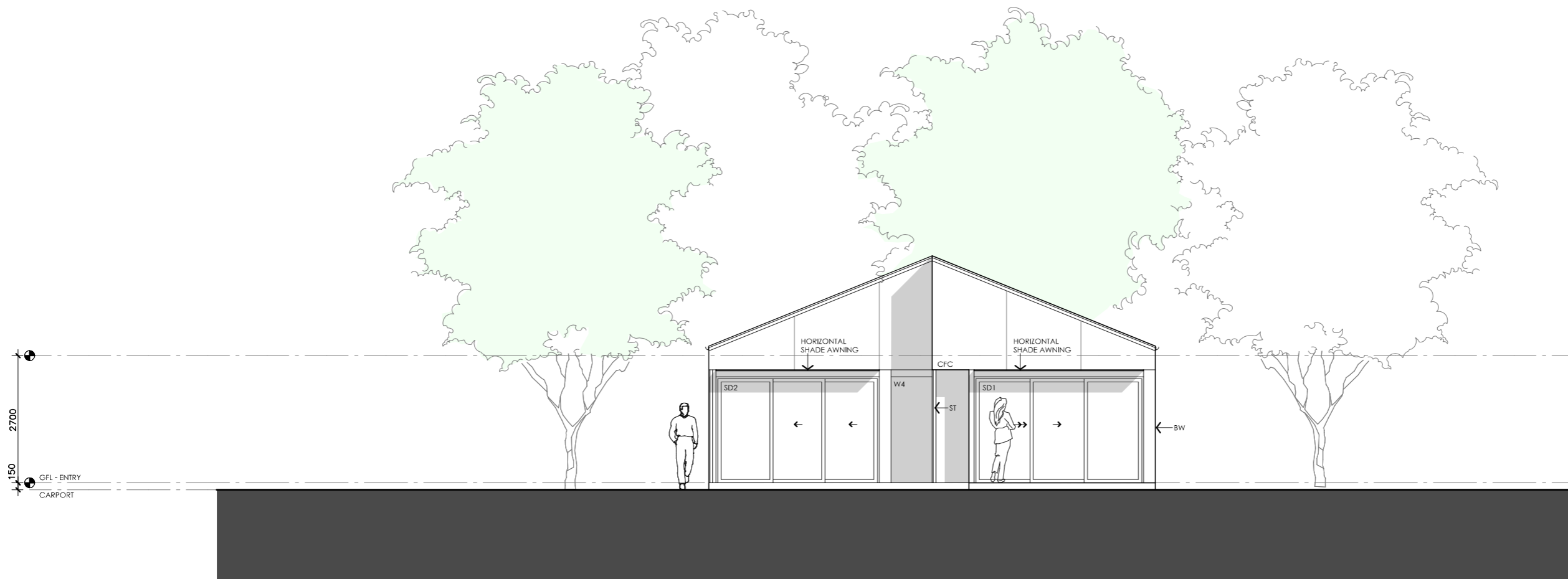
<p><b>LEGEND</b></p> <p>N/A</p>	<p><b>PROJECT</b></p>  <p>Australian Government</p>  <p>YourHome Australia's guide to environmentally sustainable homes</p>  <p>Design For Place</p>	<p><b>DESIGN</b></p> <p>Mallee House</p> <p><b>DESIGNED FOR</b></p> <p>Canberra</p> <p>Technical drawings should be read with the Mallee House Canberra 'Design Options' document which includes building specifications and rating information.</p>	<p><b>DETAILS</b></p> <p><b>Drawing title:</b> Roof Plan</p> <p><b>Scale:</b> 1:100</p> <p><b>Paper size:</b> A3</p> <p><b>Drawing number:</b> 3/11</p> <p><b>Date issued:</b> June 2023</p> <p><b>Project stage:</b> Preliminary</p> 
<p><b>DISCLAIMER</b></p> <p>This house plan is a guide only. It does not constitute legal or other professional advice. You should seek legal or other professional advice in relation to your specific circumstances before adopting any recommendation made within it e.g. advice on structural engineering or building certification requirements. The Commonwealth does not accept responsibility for the accuracy or completeness of this plan, its fitness for a particular purpose, or compliance with any regulatory requirements and standards. Further, the Commonwealth also disclaims liability, to the extent permitted by law, for any liabilities, losses, damages and costs arising from any reliance on the contents of this plan.</p>			



01 | EAST ELEVATION  
1:100




# MALLEE HOUSE

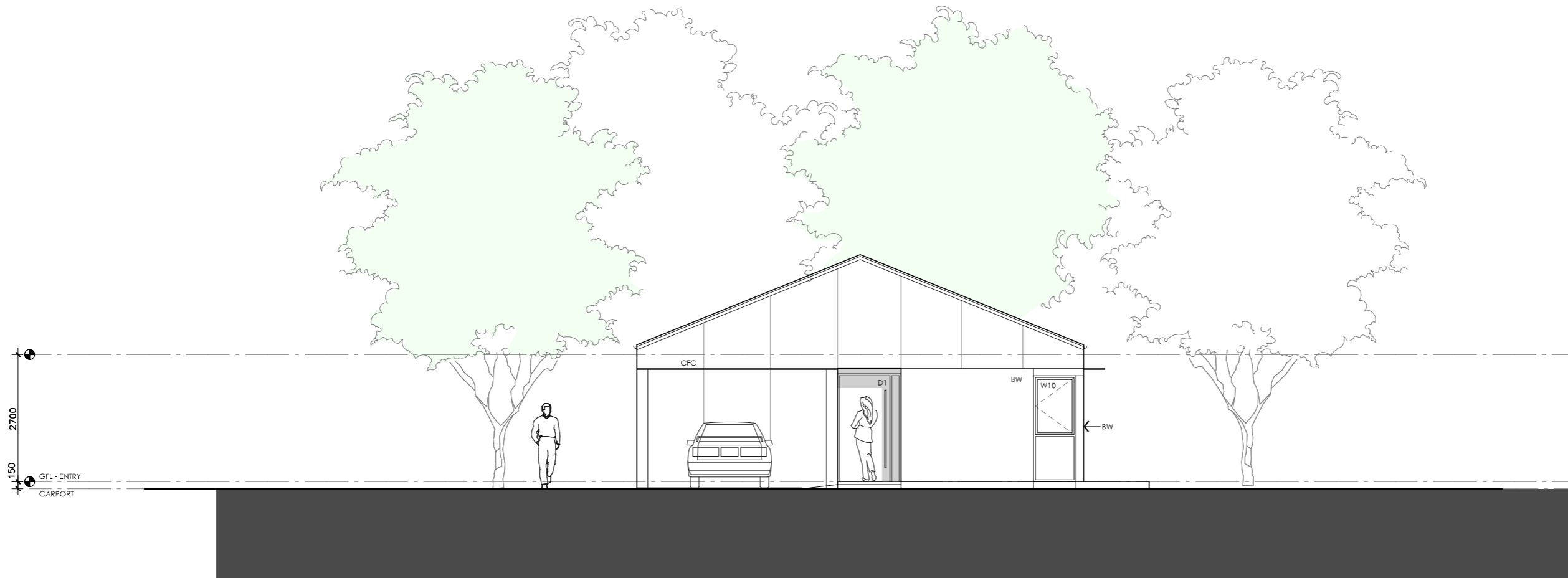
<p><b>LEGEND</b></p> <p>BW FACE BRICK WALL TYPE &amp; COLOUR TBC</p> <p>WB WEATHERBOARD CLADDING TYPE &amp; COLOUR TBC</p> <p>CFC COMPRESSED FC SHEET ON TIMBER FRAME EXPRESSED JOINT AT EDGES INDICATED</p> <p>MF FOLDED METAL FASCIA COLOUR TBC</p> <p>ST STEEL WORK COLOUR TBC</p> <p>GD GARAGE DOOR COLOUR TBC</p> <p>AL ALUMINIUM COVER PLATE COLOUR TO MATCH WINDOW FRAMES</p>	<p><b>PROJECT</b></p>  <p>Australian Government</p>  <p>YourHome Australia's guide to environmentally sustainable homes</p>  <p>Design For Place</p> <p><b>DISCLAIMER</b></p> <p>This house plan is a guide only. It does not constitute legal or other professional advice. You should seek legal or other professional advice in relation to your specific circumstances before adopting any recommendation made within it e.g. advice on structural engineering or building certification requirements. The Commonwealth does not accept responsibility for the accuracy or completeness of this plan, its fitness for a particular purpose, or compliance with any regulatory requirements and standards. Further, the Commonwealth also disclaims liability, to the extent permitted by law, for any liabilities, losses, damages and costs arising from any reliance on the contents of this plan.</p>	<p><b>DESIGN</b></p> <p>Mallee House</p> <p><b>DESIGNED FOR</b></p> <p>Canberra</p> <p>Technical drawings should be read with the Mallee House Canberra 'Design Options' document which includes building specifications and rating information.</p>	<p><b>DETAILS</b></p> <p><b>Drawing title:</b> Elevation-East</p> <p><b>Scale:</b> 1:100</p> <p><b>Paper size:</b> A3</p> <p><b>Drawing number:</b> 4/11</p> <p><b>Date issued:</b> June 2023</p> <p><b>Project stage:</b> Preliminary</p>
--	---	--	--



01 | NORTH ELEVATION  
1:100




# MALLEE HOUSE

<p><b>LEGEND</b></p> <p>BW FACE BRICK WALL TYPE &amp; COLOUR TBC</p> <p>WB WEATHERBOARD CLADDING TYPE &amp; COLOUR TBC</p> <p>CFC COMPRESSED FC SHEET ON TIMBER FRAME EXPRESSED JOINT AT EDGES INDICATED</p> <p>MF FOLDED METAL FASCIA COLOUR TBC</p> <p>ST STEEL WORK COLOUR TBC</p> <p>GD GARAGE DOOR COLOUR TBC</p> <p>AL ALUMINIUM COVER PLATE COLOUR TO MATCH WINDOW FRAMES</p>	<p><b>PROJECT</b></p>  <p>Australian Government</p>  <p>YourHome Australia's guide to environmentally sustainable homes</p>  <p>Design For Place</p> <p><b>DISCLAIMER</b></p> <p>This house plan is a guide only. It does not constitute legal or other professional advice. You should seek legal or other professional advice in relation to your specific circumstances before adopting any recommendation made within it e.g. advice on structural engineering or building certification requirements. The Commonwealth does not accept responsibility for the accuracy or completeness of this plan, its fitness for a particular purpose, or compliance with any regulatory requirements and standards. Further, the Commonwealth also disclaims liability, to the extent permitted by law, for any liabilities, losses, damages and costs arising from any reliance on the contents of this plan.</p>	<p><b>DESIGN</b></p> <p>Mallee House</p> <p><b>DESIGNED FOR</b></p> <p>Canberra</p> <p>Technical drawings should be read with the Mallee House Canberra 'Design Options' document which includes building specifications and rating information.</p>	<p><b>DETAILS</b></p> <p><b>Drawing title:</b> Elevation-North</p> <p><b>Scale:</b> 1:100</p> <p><b>Paper size:</b> A3</p> <p><b>Drawing number:</b> 5/11</p> <p><b>Date issued:</b> June 2023</p> <p><b>Project stage:</b> Preliminary</p>
--	---	--	---



01 | SOUTH ELEVATION  
1:100




# MALLEE HOUSE

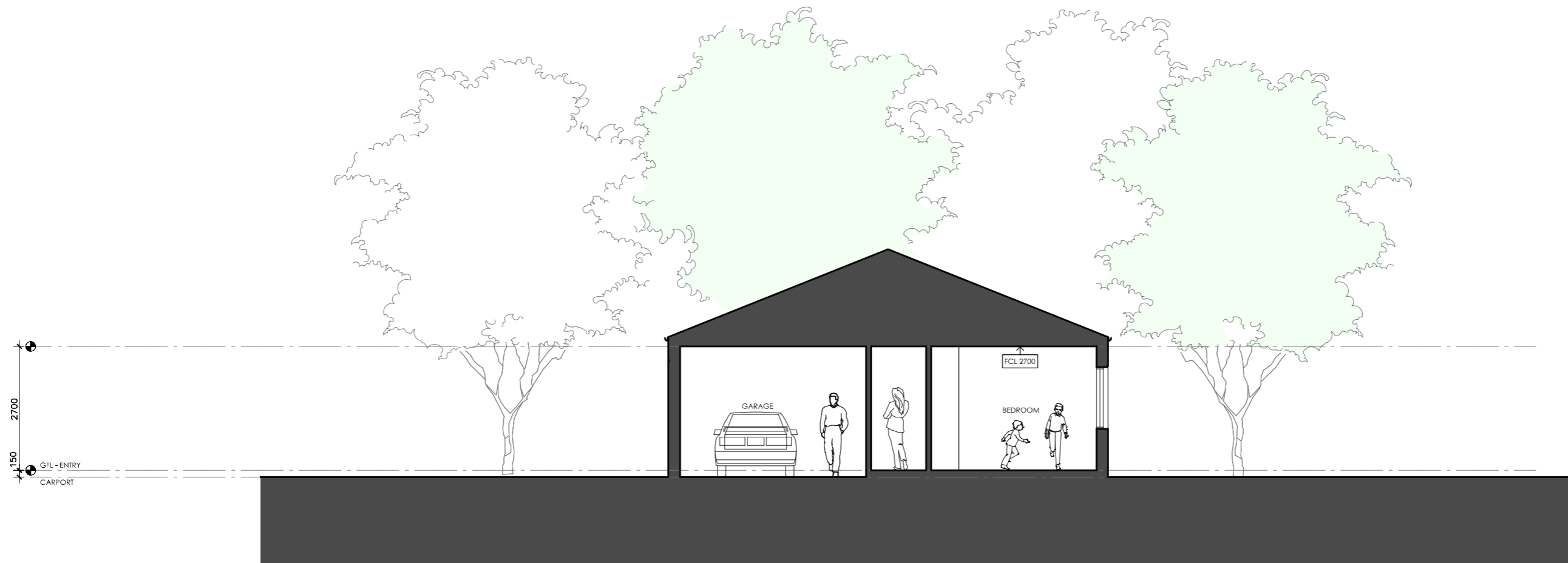
<p><b>LEGEND</b></p> <p>BW FACE BRICK WALL TYPE &amp; COLOUR TBC</p> <p>WB WEATHERBOARD CLADDING TYPE &amp; COLOUR TBC</p> <p>CFC COMPRESSED FC SHEET ON TIMBER FRAME EXPRESSED JOINT AT EDGES INDICATED</p> <p>MF FOLDED METAL FASCIA COLOUR TBC</p> <p>ST STEEL WORK COLOUR TBC</p> <p>GD GARAGE DOOR COLOUR TBC</p> <p>AL ALUMINIUM COVER PLATE COLOUR TO MATCH WINDOW FRAMES</p>	<p><b>PROJECT</b></p>  <p>Australian Government</p>  <p>YourHome Australia's guide to environmentally sustainable homes</p>  <p>Design For Place</p> <p><b>DISCLAIMER</b></p> <p>This house plan is a guide only. It does not constitute legal or other professional advice. You should seek legal or other professional advice in relation to your specific circumstances before adopting any recommendation made within it e.g. advice on structural engineering or building certification requirements. The Commonwealth does not accept responsibility for the accuracy or completeness of this plan, its fitness for a particular purpose, or compliance with any regulatory requirements and standards. Further, the Commonwealth also disclaims liability, to the extent permitted by law, for any liabilities, losses, damages and costs arising from any reliance on the contents of this plan.</p>	<p><b>DESIGN</b></p> <p>Mallee House</p> <p><b>DESIGNED FOR</b></p> <p>Canberra</p> <p>Technical drawings should be read with the Mallee House Canberra 'Design Options' document which includes building specifications and rating information.</p>	<p><b>DETAILS</b></p> <p><b>Drawing title:</b> Elevation-South</p> <p><b>Scale:</b> 1:100</p> <p><b>Paper size:</b> A3</p> <p><b>Drawing number:</b> 6/11</p> <p><b>Date issued:</b> June 2023</p> <p><b>Project stage:</b> Preliminary</p>
--	---	--	---



01 | WEST ELEVATION  
1:100




# MALLEE HOUSE

<p><b>LEGEND</b></p> <p>BW FACE BRICK WALL TYPE &amp; COLOUR TBC</p> <p>WB WEATHERBOARD CLADDING TYPE &amp; COLOUR TBC</p> <p>CFC COMPRESSED FC SHEET ON TIMBER FRAME EXPRESSED JOINT AT EDGES INDICATED</p> <p>MF FOLDED METAL FASCIA COLOUR TBC</p> <p>ST STEEL WORK COLOUR TBC</p> <p>GD GARAGE DOOR COLOUR TBC</p> <p>AL ALUMINIUM COVER PLATE COLOUR TO MATCH WINDOW FRAMES</p>	<p><b>PROJECT</b></p>  <p>Australian Government</p>  <p>YourHome Australia's guide to environmentally sustainable homes</p>  <p>Design For Place</p> <p><b>DISCLAIMER</b></p> <p>This house plan is a guide only. It does not constitute legal or other professional advice. You should seek legal or other professional advice in relation to your specific circumstances before adopting any recommendation made within it e.g. advice on structural engineering or building certification requirements. The Commonwealth does not accept responsibility for the accuracy or completeness of this plan, its fitness for a particular purpose, or compliance with any regulatory requirements and standards. Further, the Commonwealth also disclaims liability, to the extent permitted by law, for any liabilities, losses, damages and costs arising from any reliance on the contents of this plan.</p>	<p><b>DESIGN</b></p> <p>Mallee House</p> <p><b>DESIGNED FOR</b></p> <p>Canberra</p> <p>Technical drawings should be read with the Mallee House Canberra 'Design Options' document which includes building specifications and rating information.</p>	<p><b>DETAILS</b></p> <p><b>Drawing title:</b> Elevation-West</p> <p><b>Scale:</b> 1:100</p> <p><b>Paper size:</b> A3</p> <p><b>Drawing number:</b> 7/11</p> <p><b>Date issued:</b> June 2023</p> <p><b>Project stage:</b> Preliminary</p>
--	---	--	--

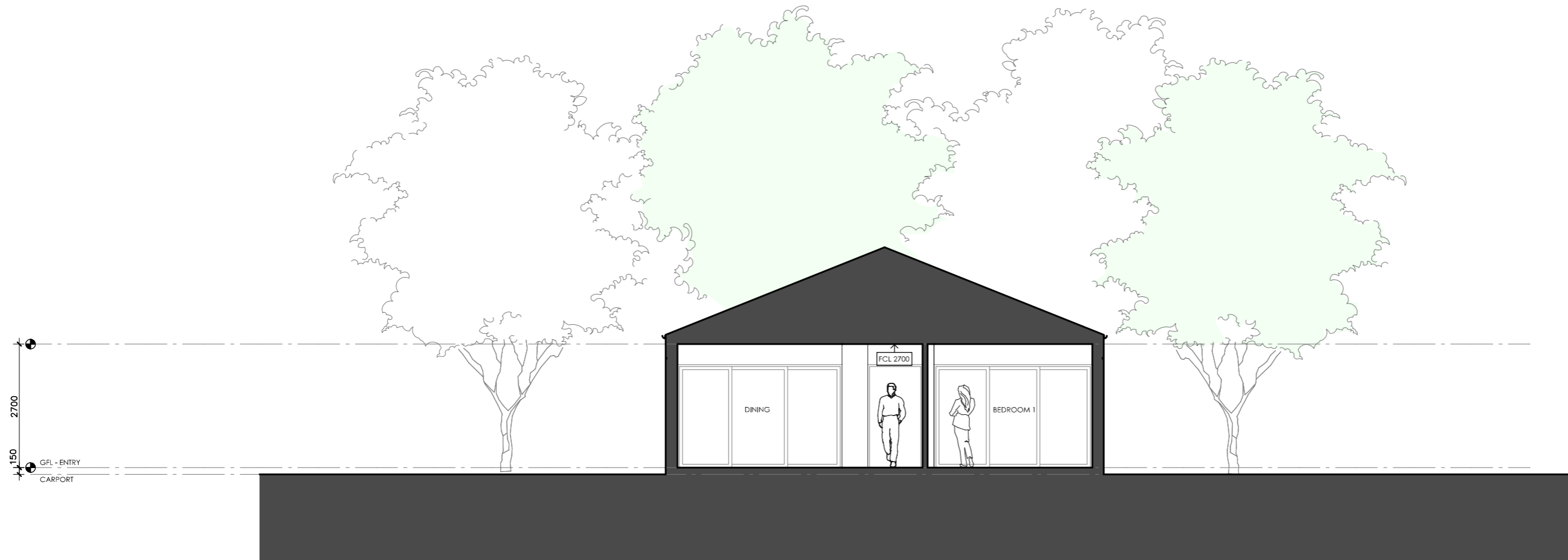


01 | SECTION AA  
1:100

# MALLEE HOUSE




<p><b>LEGEND</b></p> <p>BW FACE BRICK WALL TYPE &amp; COLOUR TBC</p> <p>WB WEATHERBOARD CLADDING TYPE &amp; COLOUR TBC</p> <p>CFC COMPRESSED FC SHEET ON TIMBER FRAME EXPRESSED JOINT AT EDGES INDICATED</p> <p>MF FOLDED METAL FASCIA COLOUR TBC</p> <p>ST STEEL WORK COLOUR TBC</p> <p>GD GARAGE DOOR COLOUR TBC</p> <p>AL ALUMINIUM COVER PLATE COLOUR TO MATCH WINDOW FRAMES</p>	<p><b>PROJECT</b></p>  <p>Australian Government</p>  <p>YourHome Australia's guide to environmentally sustainable homes</p>  <p>Design For Place</p> <p><b>DISCLAIMER</b></p> <p>This house plan is a guide only. It does not constitute legal or other professional advice. You should seek legal or other professional advice in relation to your specific circumstances before adopting any recommendation made within it e.g. advice on structural engineering or building certification requirements. The Commonwealth does not accept responsibility for the accuracy or completeness of this plan, its fitness for a particular purpose, or compliance with any regulatory requirements and standards. Further, the Commonwealth also disclaims liability, to the extent permitted by law, for any liabilities, losses, damages and costs arising from any reliance on the contents of this plan.</p>	<p><b>DESIGN</b></p> <p>Mallee House</p> <p><b>DESIGNED FOR</b></p> <p>Canberra</p> <p>Technical drawings should be read with the Mallee House Canberra 'Design Options' document which includes building specifications and rating information.</p>	<p><b>DETAILS</b></p> <p><b>Drawing title:</b> Section 1</p> <p><b>Scale:</b> 1:100</p> <p><b>Paper size:</b> A3</p> <p><b>Drawing number:</b> 8/11</p> <p><b>Date issued:</b> June 2023</p> <p><b>Project stage:</b> Preliminary</p>
--	---	--	---

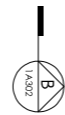
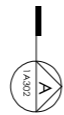
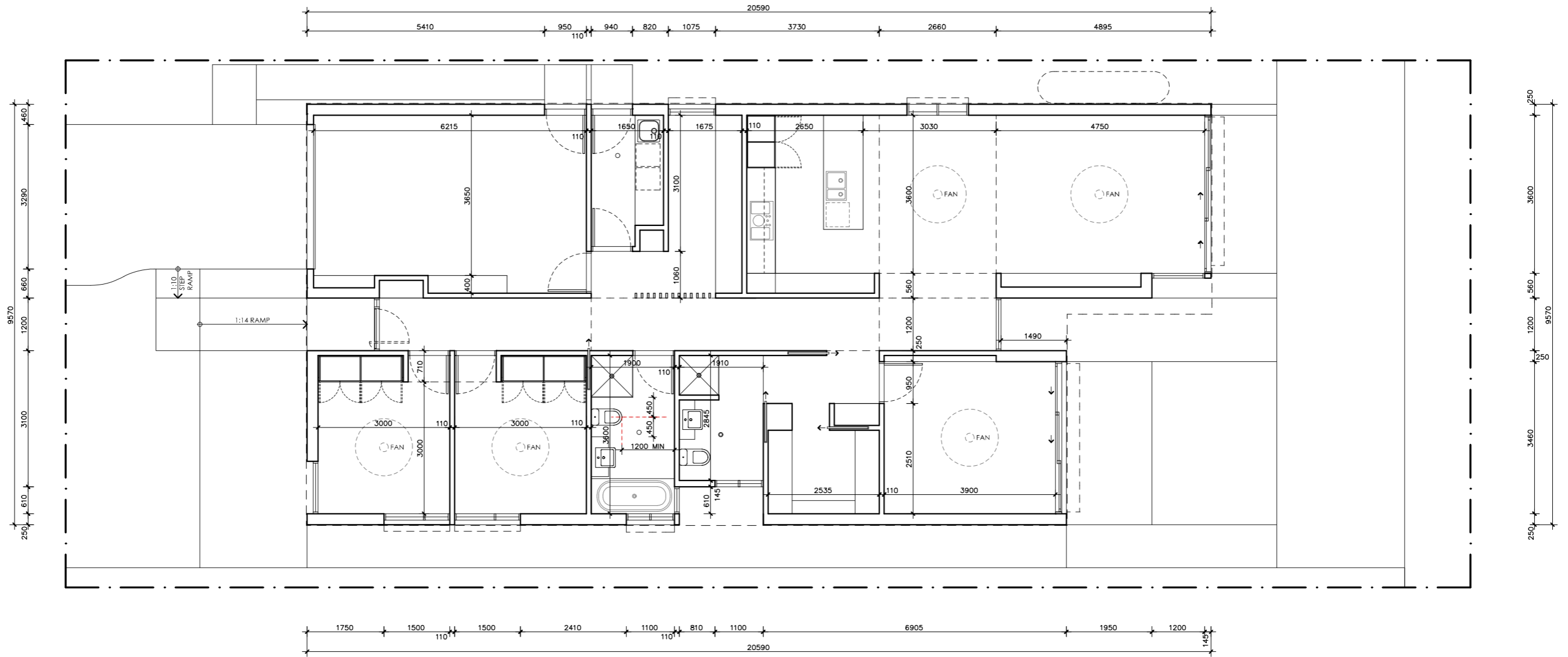




01 | SECTION BB  
1:100

# MALLEE HOUSE

<p><b>LEGEND</b></p> <p>BW FACE BRICK WALL TYPE &amp; COLOUR TBC</p> <p>WB WEATHERBOARD CLADDING TYPE &amp; COLOUR TBC</p> <p>CFC COMPRESSED FC SHEET ON TIMBER FRAME EXPRESSED JOINT AT EDGES INDICATED</p> <p>MF FOLDED METAL FASCIA COLOUR TBC</p> <p>ST STEEL WORK COLOUR TBC</p> <p>GD GARAGE DOOR COLOUR TBC</p> <p>AL ALUMINIUM COVER PLATE COLOUR TO MATCH WINDOW FRAMES</p>	<p><b>PROJECT</b></p>  <p>Australian Government</p>  <p>YourHome Australia's guide to environmentally sustainable homes</p>  <p>Design For Place</p> <p><b>DISCLAIMER</b></p> <p>This house plan is a guide only. It does not constitute legal or other professional advice. You should seek legal or other professional advice in relation to your specific circumstances before adopting any recommendation made within it e.g. advice on structural engineering or building certification requirements. The Commonwealth does not accept responsibility for the accuracy or completeness of this plan, its fitness for a particular purpose, or compliance with any regulatory requirements and standards. Further, the Commonwealth also disclaims liability, to the extent permitted by law, for any liabilities, losses, damages and costs arising from any reliance on the contents of this plan.</p>	<p><b>DESIGN</b></p> <p>Mallee House</p> <p><b>DESIGNED FOR</b></p> <p>Canberra</p> <p>Technical drawings should be read with the Mallee House Canberra 'Design Options' document which includes building specifications and rating information.</p>	<p><b>DETAILS</b></p> <p><b>Drawing title:</b> Section 2</p> <p><b>Scale:</b> 1:100</p> <p><b>Paper size:</b> A3</p> <p><b>Drawing number:</b> 9/11</p> <p><b>Date issued:</b> June 2023</p> <p><b>Project stage:</b> Preliminary</p>
--	---	--	---



# MALLEE HOUSE

## LEGEND

N/A

## PROJECT



Australian Government



Design For Place

## DESIGN

Mallee House

## DESIGNED FOR

Canberra

Technical drawings should be read with the Mallee House Canberra 'Design Options' document which includes building specifications and rating information.

## DETAILS

**Drawing title:** Setout Plan

**Scale:** 1:100

**Paper size:** A3

**Drawing number:** 10/11

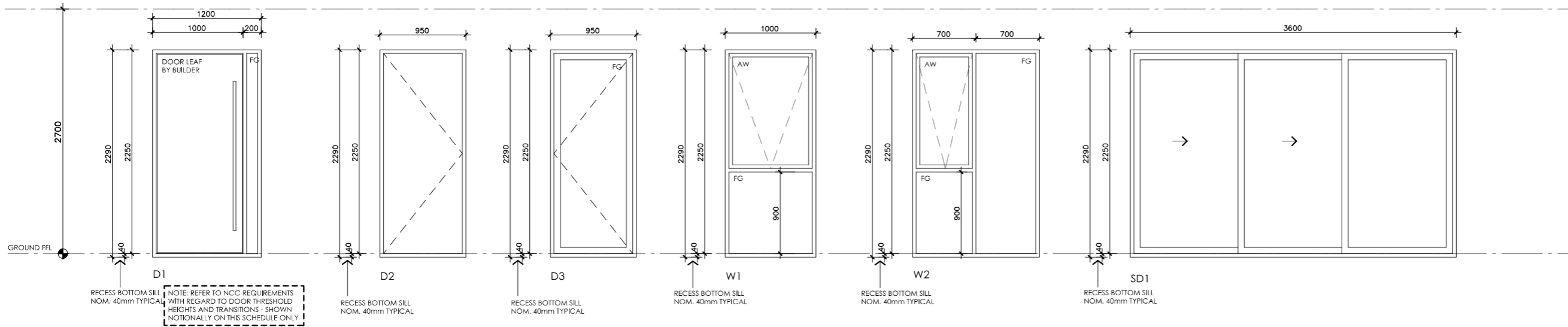
**Date issued:** June 2023

**Project stage:** Preliminary



## DISCLAIMER

This house plan is a guide only. It does not constitute legal or other professional advice. You should seek legal or other professional advice in relation to your specific circumstances before adopting any recommendation made within it e.g. advice on structural engineering or building certification requirements. The Commonwealth does not accept responsibility for the accuracy or completeness of this plan, its fitness for a particular purpose, or compliance with any regulatory requirements and standards. Further, the Commonwealth also disclaims liability, to the extent permitted by law, for any liabilities, losses, damages and costs arising from any reliance on the contents of this plan.



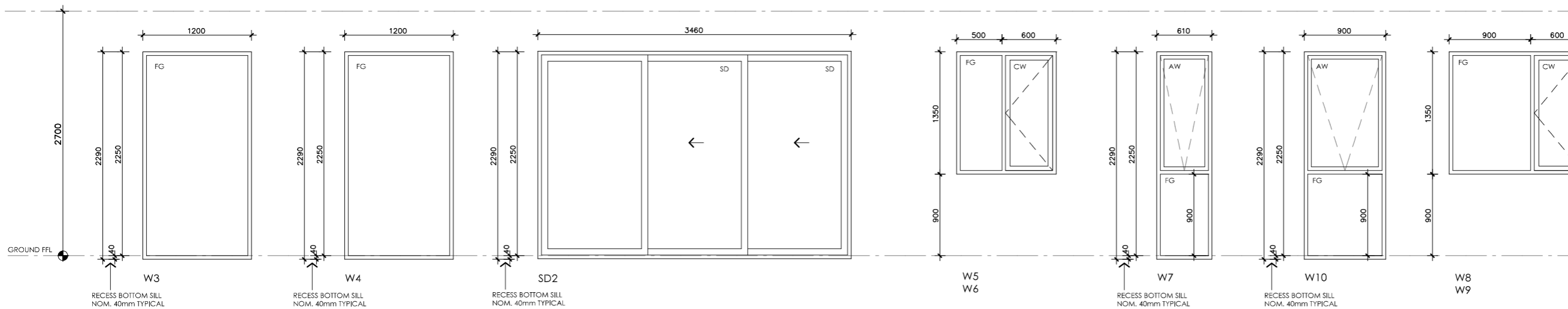
**NOTES**

NOTE: FABRICATOR TO CONFIRM WHICH WINDOWS/DOORS REQUIRE LAMINATED SAFETY GLASS AND SPECIFY ACCORDINGLY. ALL GLAZING TO CODE REQUIREMENTS

NOTE: FRAME SECTION WIDTHS DIMENSIONED ARE NOTIONAL ONLY. FABRICATOR TO CONFIRM FRAME SECTION SIZE

NOTE: OVERALL WINDOW DIMENSIONS NOMINAL ONLY - CHECK MEASURE EXISTING OPENING ON SITE PRIOR TO ORDERING

NOTE: REFER TO SPECIFICATIONS DOCUMENT FOR FRAME TYPE, AND GLAZING PERFORMANCE VALUES (U-VALUE AND SHGC)



# MALLEE HOUSE

**LEGEND**

- FG FIXED GLASS  
GLAZING TO CODE REQUIREMENTS
- CW CASEMENT SASH  
GLAZING TO CODE REQUIREMENTS
- AW AWNING SASH  
GLAZING TO CODE REQUIREMENTS
- SD SLIDING DOOR  
GLAZING TO CODE REQUIREMENTS
- SSD SLIDING STACKER DOOR  
GLAZING TO CODE REQUIREMENTS
- SW SLIDING WINDOW  
GLAZING TO CODE REQUIREMENTS

**PROJECT**



**DISCLAIMER**

This house plan is a guide only. It does not constitute legal or other professional advice. You should seek legal or other professional advice in relation to your specific circumstances before adopting any recommendation made within it e.g. advice on structural engineering or building certification requirements. The Commonwealth does not accept responsibility for the accuracy or completeness of this plan, its fitness for a particular purpose, or compliance with any regulatory requirements and standards. Further, the Commonwealth also disclaims liability, to the extent permitted by law, for any liabilities, losses, damages and costs arising from any reliance on the contents of this plan.

**DESIGN**

**Mallee House**

**DESIGNED FOR**

**Canberra**

Technical drawings should be read with the Mallee House Canberra 'Design Options' document which includes building specifications and rating information.

**DETAILS**

**Drawing title:** Window and Door Schedule

**Scale:** 1:50

**Paper size:** A3

**Drawing number:** 11/11

**Date issued:** June 2023

**Project stage:** Preliminary