



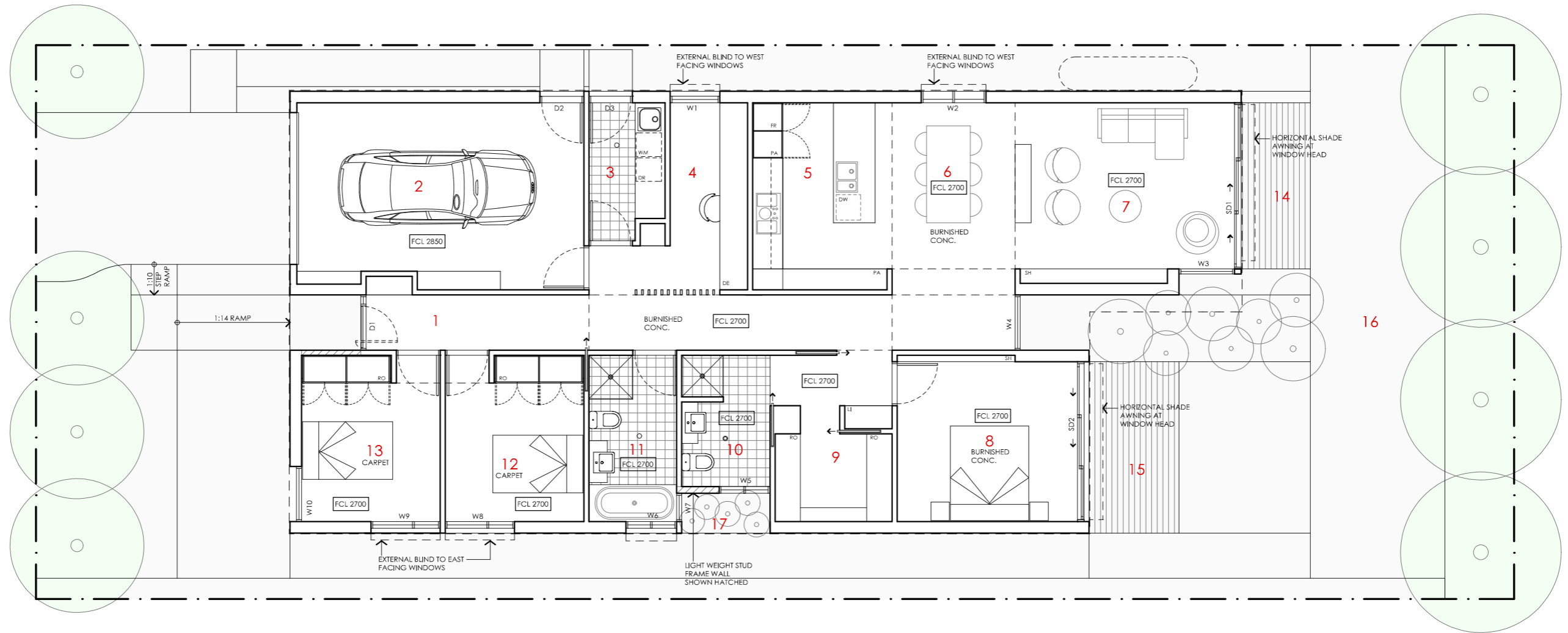


MALLEE HOUSE

<p>LEGEND N/A</p>	<p>PROJECT</p>  <p>Australian Government</p>  <p>YourHome Australia's guide to environmentally sustainable homes</p>  <p>Design For Place</p>	<p>DESIGN Mallee House</p> <p>DESIGNED FOR Melbourne</p> <p>Technical drawings should be read with the Mallee House Melbourne 'Design Options' document which includes building specifications and rating information.</p>	<p>DETAILS Drawing title: Site Plan Scale: 1:200 Paper size: A3 Drawing number: 1/11 Date issued: June 2023 Project stage: Preliminary</p> 
<p>DISCLAIMER This house plan is a guide only. It does not constitute legal or other professional advice. You should seek legal or other professional advice in relation to your specific circumstances before adopting any recommendation made within it e.g. advice on structural engineering or building certification requirements. The Commonwealth does not accept responsibility for the accuracy or completeness of this plan, its fitness for a particular purpose, or compliance with any regulatory requirements and standards. Further, the Commonwealth also disclaims liability, to the extent permitted by law, for any liabilities, losses, damages and costs arising from any reliance on the contents of this plan.</p>			

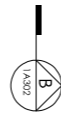
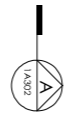


KEY

- 1 ENTRY
- 2 GARAGE
- 3 LAUNDRY
- 4 STUDY
- 5 KITCHEN
- 6 DINING
- 7 LIVING
- 8 BEDROOM 1
- 9 WALK IN ROBE
- 10 ENSUITE
- 11 BATHROOM
- 12 BEDROOM 2
- 13 BEDROOM 3
- 14 LIVING ROOM DECK
- 15 BEDROOM 1 DECK
- 16 NORTHERN YARD
- 17 SOLAR COURT

LEGEND

- FR FRIDGE
- PA PANTRY
- DW DISH WASHER
- RO ROBE
- DE DESK
- ST STORAGE CUPBOARD
- SH SHELVE
- WM WASHING MACHINE
- DR CLOTHES DRYER
- CO COAT CUPBOARD
- LI LINEN CUPBOARD
- FCL FINISHED CEILING LEVEL



MALLEE HOUSE

NOTES

AREA
 GROUND FLOOR LIVING 148 m²
 GARAGE 26 m²
TOTAL GFA 174 m²
 GROUND FLOOR DECKS 30 m²
 INDICATIVE BLOCK SIZE 384 m²

REFER TO NCC FOR SANITARY COMPARTMENT CIRCULATION, WALL REINFORCEMENT AND THRESHOLD/HOB REQUIREMENTS
 DOOR OPENINGS, CORRIDOR WIDTHS AND THRESHOLDS, ENTRY RAMP GRADES AND COVER ETC TO NCC REQUIREMENTS
 CONSTRUCTION NEAR BOUNDARY MUST COMPLY WITH NCC REQUIREMENTS - REVISE TO SUIT LOCAL REGULATIONS AND BUILDING ENVELOPES ETC
 SETBACK FROM BOUNDARIES SHOWN INDICATIVELY ONLY - REVISE TO SUIT LOCAL REGULATIONS AND BUILDING ENVELOPES ETC
 NOTE: GFA CALCULATIONS DO NOT INCLUDE DECKS, TERRACES, COURTYARDS, VERANDAH, VOIDS, STAIRS & BALCONIES @ UFL. NOTE THAT INTERNAL ROOM DIMENSIONS ARE NOMINAL ONLY.
 CEILING INSULATION VALUES SPECIFIED EXTEND TO EAVES

PROJECT



DISCLAIMER

This house plan is a guide only. It does not constitute legal or other professional advice. You should seek legal or other professional advice in relation to your specific circumstances before adopting any recommendation made within it e.g. advice on structural engineering or building certification requirements. The Commonwealth does not accept responsibility for the accuracy or completeness of this plan, its fitness for a particular purpose, or compliance with any regulatory requirements and standards. Further, the Commonwealth also disclaims liability, to the extent permitted by law, for any liabilities, losses, damages and costs arising from any reliance on the contents of this plan.

DESIGN

Mallee House

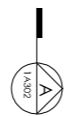
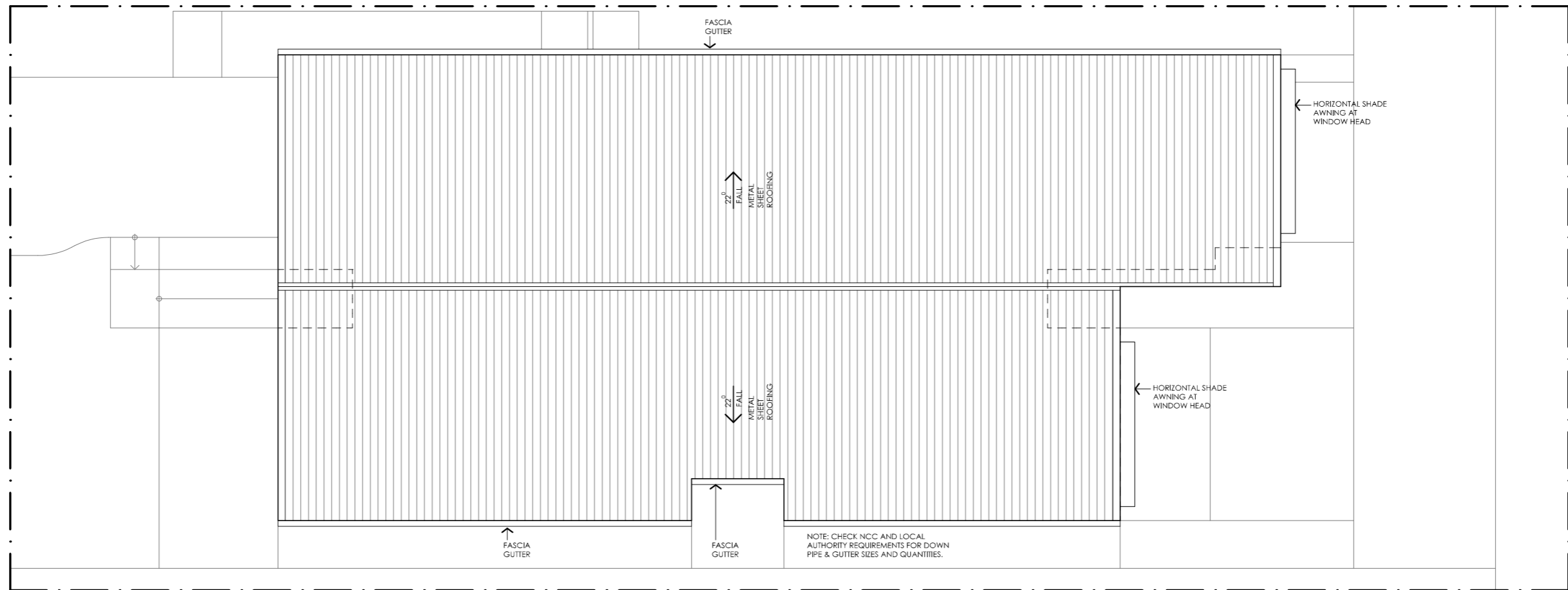
**DESIGNED FOR
Melbourne**

Technical drawings should be read with the Mallee House Melbourne 'Design Options' document which includes building specifications and rating information.





DETAILS

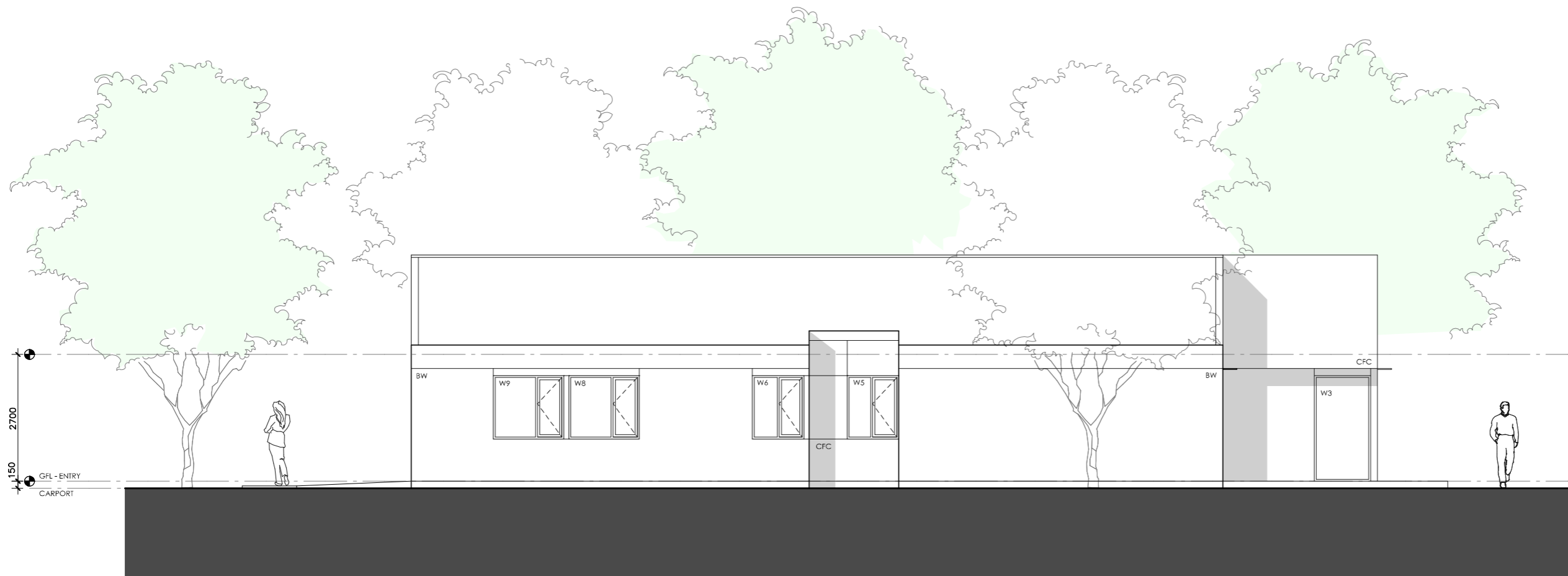
Drawing title: Floor Plan
Scale: 1:100
Paper size: A3
Drawing number: 2/11
Date issued: June 2023
Project stage: Preliminary








MALLEE HOUSE

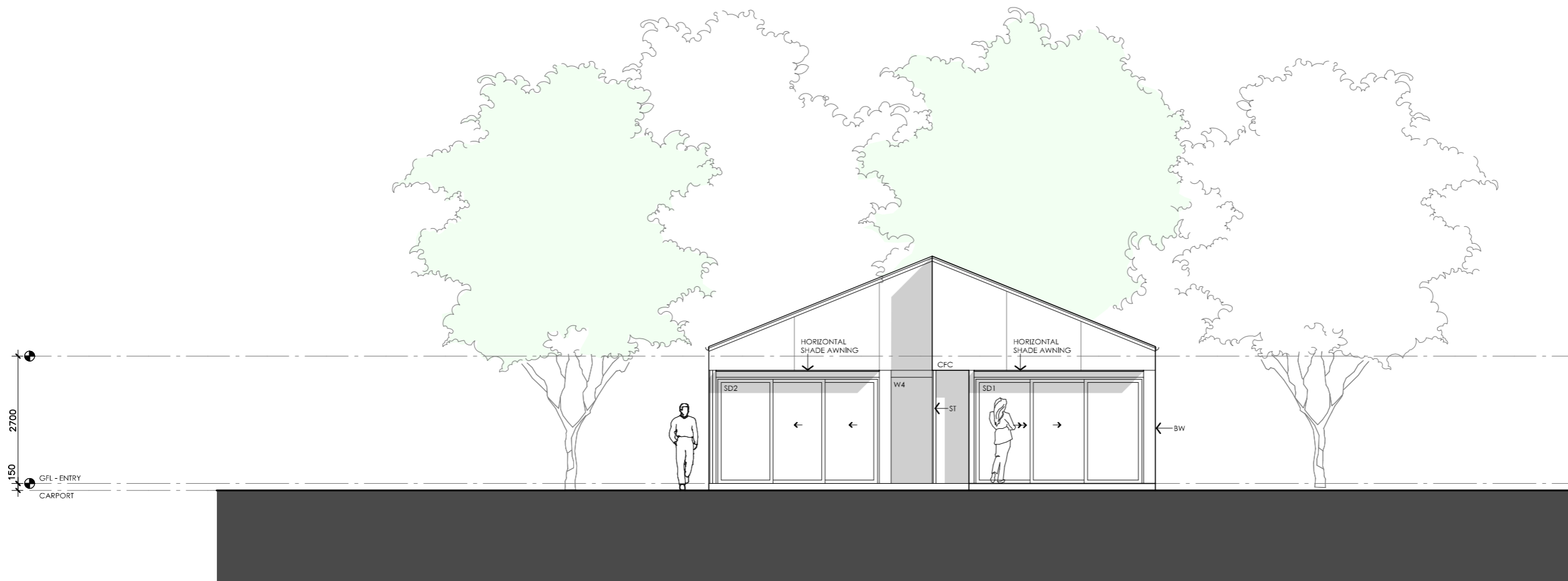
<p>LEGEND N/A</p>	<p>PROJECT</p>  <p>Australian Government</p>  <p>YourHome Australia's guide to environmentally sustainable homes</p>  <p>Design For Place</p>	<p>DESIGN Mallee House</p> <p>DESIGNED FOR Melbourne</p> <p>Technical drawings should be read with the Mallee House Melbourne 'Design Options' document which includes building specifications and rating information.</p>	<p>DETAILS Drawing title: Roof Plan Scale: 1:100 Paper size: A3 Drawing number: 3/11 Date issued: June 2023 Project stage: Preliminary</p> 
<p>DISCLAIMER</p> <p>This house plan is a guide only. It does not constitute legal or other professional advice. You should seek legal or other professional advice in relation to your specific circumstances before adopting any recommendation made within it e.g. advice on structural engineering or building certification requirements. The Commonwealth does not accept responsibility for the accuracy or completeness of this plan, its fitness for a particular purpose, or compliance with any regulatory requirements and standards. Further, the Commonwealth also disclaims liability, to the extent permitted by law, for any liabilities, losses, damages and costs arising from any reliance on the contents of this plan.</p>			



01 | EAST ELEVATION
1:100




MALLEE HOUSE

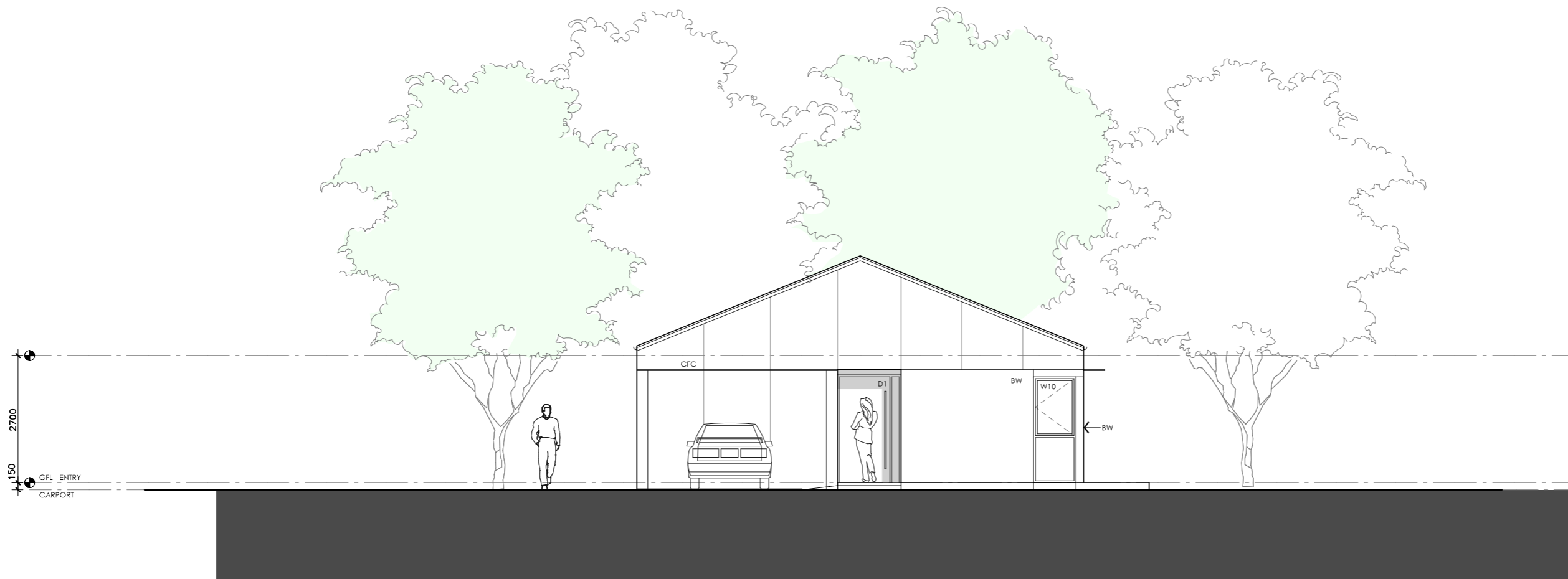
<p>LEGEND</p> <p>BW FACE BRICK WALL TYPE & COLOUR TBC</p> <p>WB WEATHERBOARD CLADDING TYPE & COLOUR TBC</p> <p>CFC COMPRESSED FC SHEET ON TIMBER FRAME EXPRESSED JOINT AT EDGES INDICATED</p> <p>MF FOLDED METAL FASCIA COLOUR TBC</p> <p>ST STEEL WORK COLOUR TBC</p> <p>GD GARAGE DOOR COLOUR TBC</p> <p>AL ALUMINIUM COVER PLATE COLOUR TO MATCH WINDOW FRAMES</p>	<p>PROJECT</p>  <p>Australian Government</p>  <p>YourHome Australia's guide to environmentally sustainable homes</p>  <p>Design For Place</p> <p>DISCLAIMER</p> <p>This house plan is a guide only. It does not constitute legal or other professional advice. You should seek legal or other professional advice in relation to your specific circumstances before adopting any recommendation made within it e.g. advice on structural engineering or building certification requirements. The Commonwealth does not accept responsibility for the accuracy or completeness of this plan, its fitness for a particular purpose, or compliance with any regulatory requirements and standards. Further, the Commonwealth also disclaims liability, to the extent permitted by law, for any liabilities, losses, damages and costs arising from any reliance on the contents of this plan.</p>	<p>DESIGN</p> <p>Mallee House</p> <p>DESIGNED FOR</p> <p>Melbourne</p> <p>Technical drawings should be read with the Mallee House Melbourne 'Design Options' document which includes building specifications and rating information.</p>	<p>DETAILS</p> <p>Drawing title: Elevation-East</p> <p>Scale: 1:100</p> <p>Paper size: A3</p> <p>Drawing number: 4/11</p> <p>Date issued: June 2023</p> <p>Project stage: Preliminary</p>
------------------------------------------------------------------------------------------------------------------------------------------------------------------------------------------------------------------------------------------------------------------------------------------------------------------------------------------------------------------------------------------------------------------	-------------------------------------------------------------------------------------------------------------------------------------------------------------------------------------------------------------------------------------------------------------------------------------------------------------------------------------------------------------------------------------------------------------------------------------------------------------------------------------------------------------------------------------------------------------------------------------------------------------------------------------------------------------------------------------------------------------------------------------------------------------------------------------------------------------------------------------------------------------------------------------------------------------------------------------------------------------------------------------------------------------------------------------------------------------------------------------------------------------------------------------------------------------------------------	--------------------------------------------------------------------------------------------------------------------------------------------------------------------------------------------------------------------------------------------------------	--------------------------------------------------------------------------------------------------------------------------------------------------------------------------------------------------------------------------------------------



01 | NORTH ELEVATION
1:100




MALLEE HOUSE

<p>LEGEND</p> <p>BW FACE BRICK WALL TYPE & COLOUR TBC</p> <p>WB WEATHERBOARD CLADDING TYPE & COLOUR TBC</p> <p>CFC COMPRESSED FC SHEET ON TIMBER FRAME EXPRESSED JOINT AT EDGES INDICATED</p> <p>MF FOLDED METAL FASCIA COLOUR TBC</p> <p>ST STEEL WORK COLOUR TBC</p> <p>GD GARAGE DOOR COLOUR TBC</p> <p>AL ALUMINIUM COVER PLATE COLOUR TO MATCH WINDOW FRAMES</p>	<p>PROJECT</p>    <p>DISCLAIMER</p> <p>This house plan is a guide only. It does not constitute legal or other professional advice. You should seek legal or other professional advice in relation to your specific circumstances before adopting any recommendation made within it e.g. advice on structural engineering or building certification requirements. The Commonwealth does not accept responsibility for the accuracy or completeness of this plan, its fitness for a particular purpose, or compliance with any regulatory requirements and standards. Further, the Commonwealth also disclaims liability, to the extent permitted by law, for any liabilities, losses, damages and costs arising from any reliance on the contents of this plan.</p>	<p>DESIGN</p> <p>Mallee House</p> <p>DESIGNED FOR</p> <p>Melbourne</p> <p>Technical drawings should be read with the Mallee House Melbourne 'Design Options' document which includes building specifications and rating information.</p>	<p>DETAILS</p> <p>Drawing title: Elevation-North</p> <p>Scale: 1:100</p> <p>Paper size: A3</p> <p>Drawing number: 5/11</p> <p>Date issued: June 2023</p> <p>Project stage: Preliminary</p>
------------------------------------------------------------------------------------------------------------------------------------------------------------------------------------------------------------------------------------------------------------------------------------------------------------------------------------------------------------------------------------------------------------------	-----------------------------------------------------------------------------------------------------------------------------------------------------------------------------------------------------------------------------------------------------------------------------------------------------------------------------------------------------------------------------------------------------------------------------------------------------------------------------------------------------------------------------------------------------------------------------------------------------------------------------------------------------------------------------------------------------------------------------------------------------------------------------------------------------------------------------------------------------------------------------------------------------------------------------------------------------------------------------------------------------------------------------------------------	----------------------------------------------------------------------------------------------------------------------------------------------------------------------------------------------------------------------------------------------------------------------	---------------------------------------------------------------------------------------------------------------------------------------------------------------------------------------------------------------------------------------------



01 | SOUTH ELEVATION
1:100

MALLEE HOUSE

<p>LEGEND</p> <p>BW FACE BRICK WALL TYPE & COLOUR TBC</p> <p>WB WEATHERBOARD CLADDING TYPE & COLOUR TBC</p> <p>CFC COMPRESSED FC SHEET ON TIMBER FRAME EXPRESSED JOINT AT EDGES INDICATED</p> <p>MF FOLDED METAL FASCIA COLOUR TBC</p> <p>ST STEEL WORK COLOUR TBC</p> <p>GD GARAGE DOOR COLOUR TBC</p> <p>AL ALUMINIUM COVER PLATE COLOUR TO MATCH WINDOW FRAMES</p>	<p>PROJECT</p>  <p>Australian Government</p>  <p>YourHome Australia's guide to environmentally sustainable homes</p>  <p>Design For Place</p> <p>DISCLAIMER</p> <p>This house plan is a guide only. It does not constitute legal or other professional advice. You should seek legal or other professional advice in relation to your specific circumstances before adopting any recommendation made within it e.g. advice on structural engineering or building certification requirements. The Commonwealth does not accept responsibility for the accuracy or completeness of this plan, its fitness for a particular purpose, or compliance with any regulatory requirements and standards. Further, the Commonwealth also disclaims liability, to the extent permitted by law, for any liabilities, losses, damages and costs arising from any reliance on the contents of this plan.</p>	<p>DESIGN</p> <p>Mallee House</p> <p>DESIGNED FOR</p> <p>Melbourne</p> <p>Technical drawings should be read with the Mallee House Melbourne 'Design Options' document which includes building specifications and rating information.</p>	<p>DETAILS</p> <p>Drawing title: Elevation-South</p> <p>Scale: 1:100</p> <p>Paper size: A3</p> <p>Drawing number: 6/11</p> <p>Date issued: June 2023</p> <p>Project stage: Preliminary</p>
------------------------------------------------------------------------------------------------------------------------------------------------------------------------------------------------------------------------------------------------------------------------------------------------------------------------------------------------------------------------------------------------------------------	-------------------------------------------------------------------------------------------------------------------------------------------------------------------------------------------------------------------------------------------------------------------------------------------------------------------------------------------------------------------------------------------------------------------------------------------------------------------------------------------------------------------------------------------------------------------------------------------------------------------------------------------------------------------------------------------------------------------------------------------------------------------------------------------------------------------------------------------------------------------------------------------------------------------------------------------------------------------------------------------------------------------------------------------------------------------------------------------------------------------------------------------------------------------------------	--------------------------------------------------------------------------------------------------------------------------------------------------------------------------------------------------------------------------------------------------------	---------------------------------------------------------------------------------------------------------------------------------------------------------------------------------------------------------------------------------------------



01 | WEST ELEVATION
1:100

MALLEE HOUSE

LEGEND	
BW	FACE BRICK WALL TYPE & COLOUR TBC
WB	WEATHERBOARD CLADDING TYPE & COLOUR TBC
CFC	COMPRESSED FC SHEET ON TIMBER FRAME EXPRESSED JOINT AT EDGES INDICATED
MF	FOLDED METAL FASCIA COLOUR TBC
ST	STEEL WORK COLOUR TBC
GD	GARAGE DOOR COLOUR TBC
AL	ALUMINIUM COVER PLATE COLOUR TO MATCH WINDOW FRAMES

PROJECT



Australian Government



YourHome
Australia's guide to environmentally sustainable homes



Design For Place

DISCLAIMER

This house plan is a guide only. It does not constitute legal or other professional advice. You should seek legal or other professional advice in relation to your specific circumstances before adopting any recommendation made within it e.g. advice on structural engineering or building certification requirements. The Commonwealth does not accept responsibility for the accuracy or completeness of this plan, its fitness for a particular purpose, or compliance with any regulatory requirements and standards. Further, the Commonwealth also disclaims liability, to the extent permitted by law, for any liabilities, losses, damages and costs arising from any reliance on the contents of this plan.

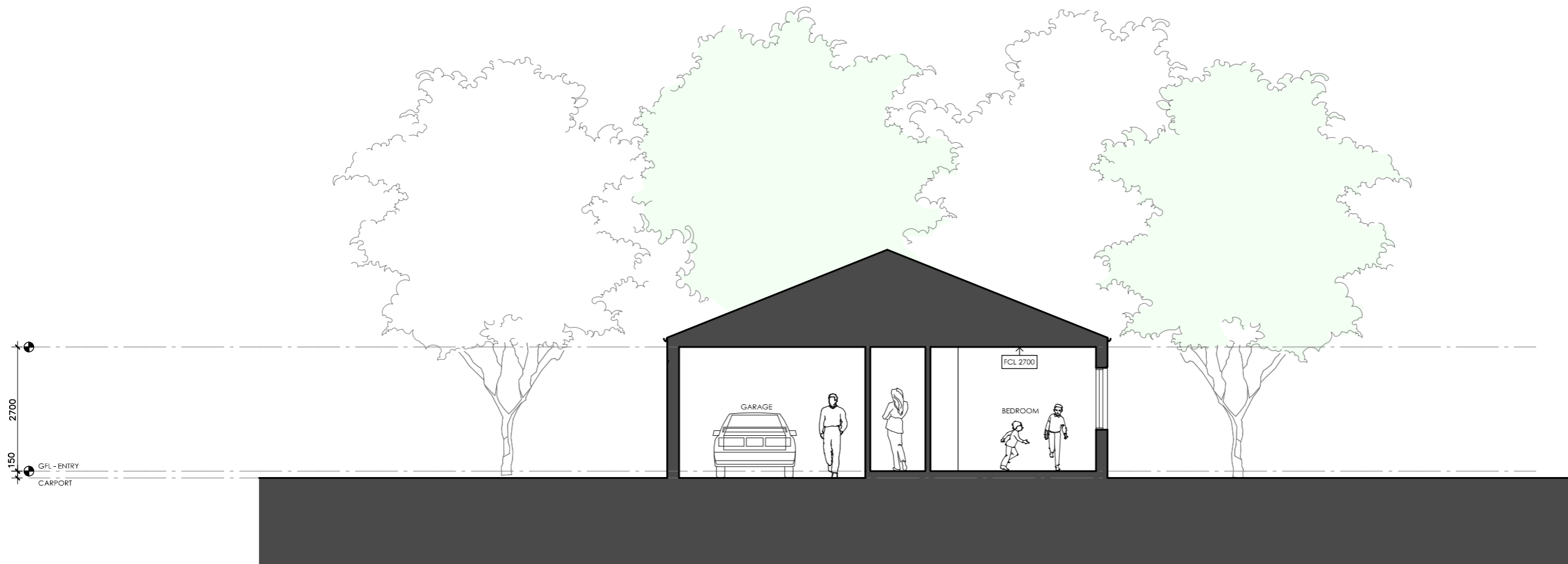
DESIGN
Mallee House

DESIGNED FOR
Melbourne

Technical drawings should be read with the Mallee House Melbourne 'Design Options' document which includes building specifications and rating information.




DETAILS

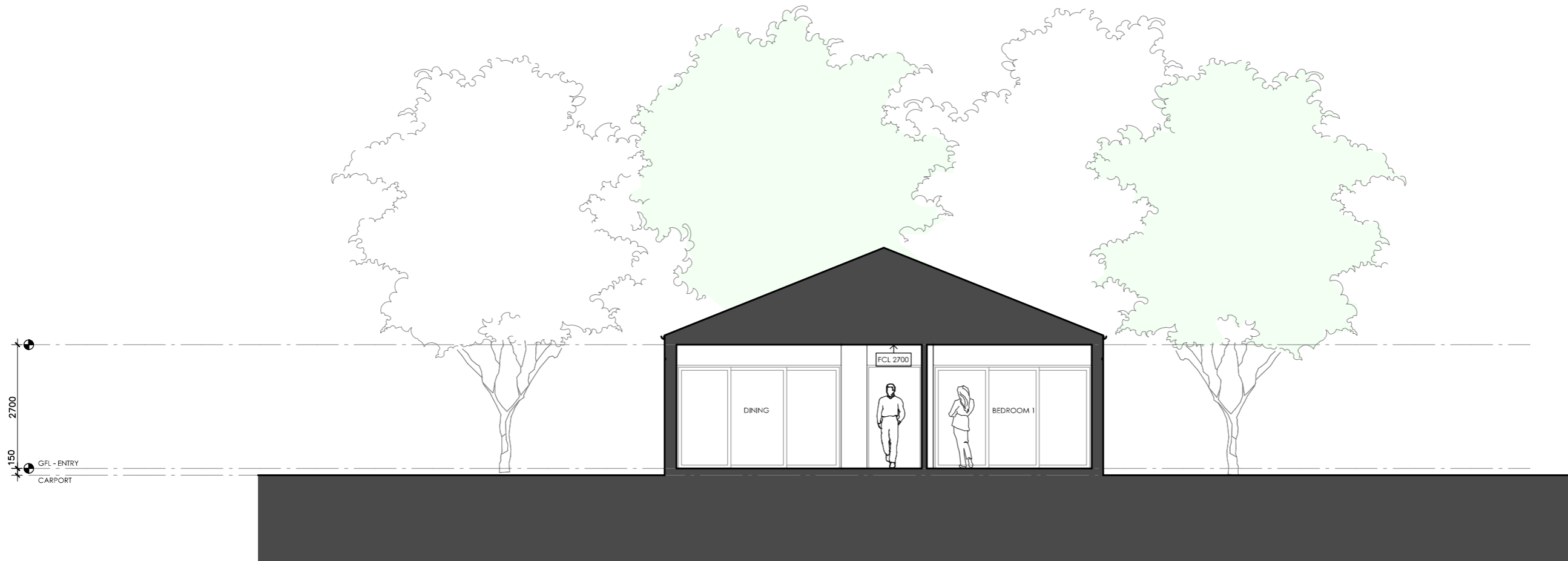
Drawing title: Elevation-West
Scale: 1:100
Paper size: A3
Drawing number: 7/11
Date issued: June 2023
Project stage: Preliminary



01 | SECTION AA
1:100




MALLEE HOUSE

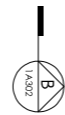
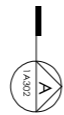
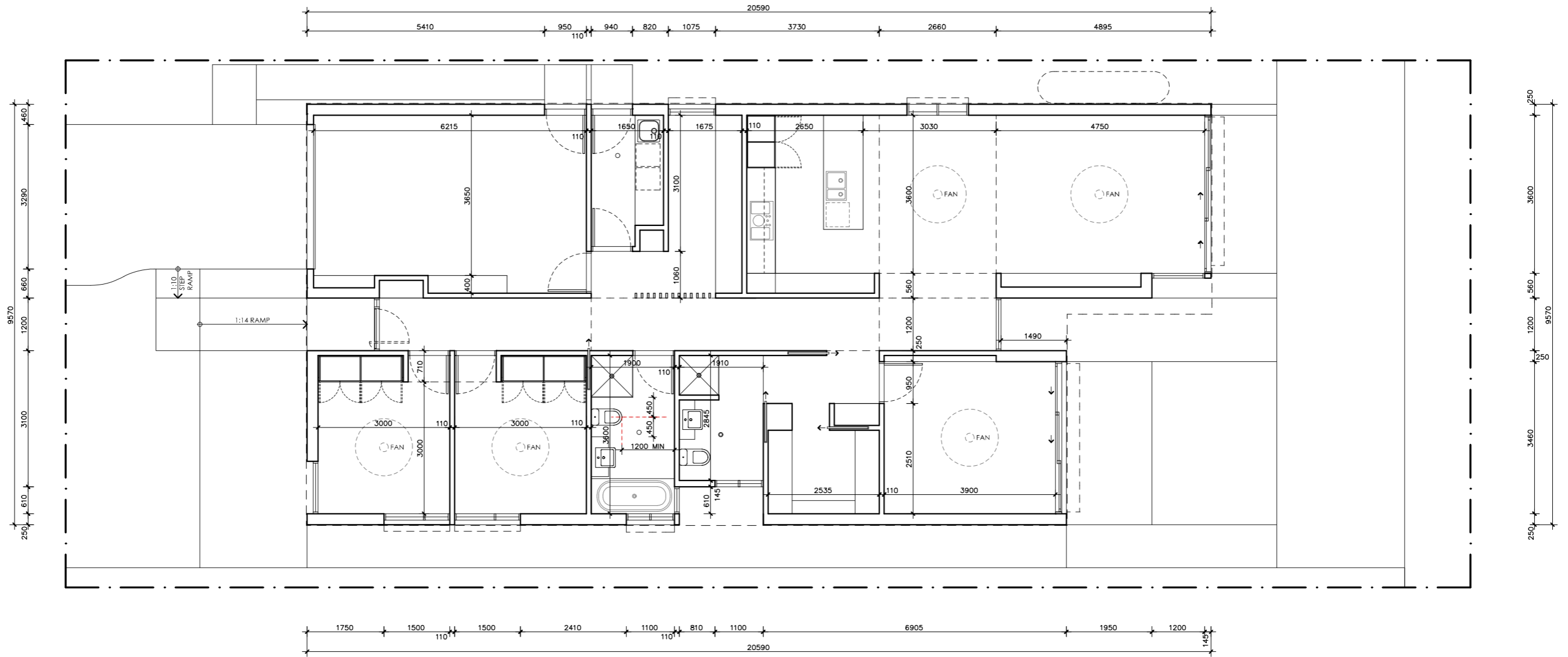
<p>LEGEND</p> <p>BW FACE BRICK WALL TYPE & COLOUR TBC</p> <p>WB WEATHERBOARD CLADDING TYPE & COLOUR TBC</p> <p>CFC COMPRESSED FC SHEET ON TIMBER FRAME EXPRESSED JOINT AT EDGES INDICATED</p> <p>MF FOLDED METAL FASCIA COLOUR TBC</p> <p>ST STEEL WORK COLOUR TBC</p> <p>GD GARAGE DOOR COLOUR TBC</p> <p>AL ALUMINIUM COVER PLATE COLOUR TO MATCH WINDOW FRAMES</p>	<p>PROJECT</p>  <p>Australian Government</p>  <p>YourHome Australia's guide to environmentally sustainable homes</p>  <p>Design For Place</p> <p>DISCLAIMER</p> <p>This house plan is a guide only. It does not constitute legal or other professional advice. You should seek legal or other professional advice in relation to your specific circumstances before adopting any recommendation made within it e.g. advice on structural engineering or building certification requirements. The Commonwealth does not accept responsibility for the accuracy or completeness of this plan, its fitness for a particular purpose, or compliance with any regulatory requirements and standards. Further, the Commonwealth also disclaims liability, to the extent permitted by law, for any liabilities, losses, damages and costs arising from any reliance on the contents of this plan.</p>	<p>DESIGN</p> <p>Mallee House</p> <p>DESIGNED FOR</p> <p>Melbourne</p> <p>Technical drawings should be read with the Mallee House Melbourne 'Design Options' document which includes building specifications and rating information.</p>	<p>DETAILS</p> <p>Drawing title: Section 1</p> <p>Scale: 1:100</p> <p>Paper size: A3</p> <p>Drawing number: 8/11</p> <p>Date issued: June 2023</p> <p>Project stage: Preliminary</p>
------------------------------------------------------------------------------------------------------------------------------------------------------------------------------------------------------------------------------------------------------------------------------------------------------------------------------------------------------------------------------------------------------------------	-------------------------------------------------------------------------------------------------------------------------------------------------------------------------------------------------------------------------------------------------------------------------------------------------------------------------------------------------------------------------------------------------------------------------------------------------------------------------------------------------------------------------------------------------------------------------------------------------------------------------------------------------------------------------------------------------------------------------------------------------------------------------------------------------------------------------------------------------------------------------------------------------------------------------------------------------------------------------------------------------------------------------------------------------------------------------------------------------------------------------------------------------------------------------------	--------------------------------------------------------------------------------------------------------------------------------------------------------------------------------------------------------------------------------------------------------	---------------------------------------------------------------------------------------------------------------------------------------------------------------------------------------------------------------------------------------



01 | SECTION BB
1:100

MALLEE HOUSE

<p>LEGEND</p> <p>BW FACE BRICK WALL TYPE & COLOUR TBC</p> <p>WB WEATHERBOARD CLADDING TYPE & COLOUR TBC</p> <p>CFC COMPRESSED FC SHEET ON TIMBER FRAME EXPRESSED JOINT AT EDGES INDICATED</p> <p>MF FOLDED METAL FASCIA COLOUR TBC</p> <p>ST STEEL WORK COLOUR TBC</p> <p>GD GARAGE DOOR COLOUR TBC</p> <p>AL ALUMINIUM COVER PLATE COLOUR TO MATCH WINDOW FRAMES</p>	<p>PROJECT</p>  <p>Australian Government</p>  <p>YourHome Australia's guide to environmentally sustainable homes</p>  <p>Design For Place</p> <p>DISCLAIMER</p> <p>This house plan is a guide only. It does not constitute legal or other professional advice. You should seek legal or other professional advice in relation to your specific circumstances before adopting any recommendation made within it e.g. advice on structural engineering or building certification requirements. The Commonwealth does not accept responsibility for the accuracy or completeness of this plan, its fitness for a particular purpose, or compliance with any regulatory requirements and standards. Further, the Commonwealth also disclaims liability, to the extent permitted by law, for any liabilities, losses, damages and costs arising from any reliance on the contents of this plan.</p>	<p>DESIGN</p> <p>Mallee House</p> <p>DESIGNED FOR</p> <p>Melbourne</p> <p>Technical drawings should be read with the Mallee House Melbourne 'Design Options' document which includes building specifications and rating information.</p>	<p>DETAILS</p> <p>Drawing title: Section 2</p> <p>Scale: 1:100</p> <p>Paper size: A3</p> <p>Drawing number: 9/11</p> <p>Date issued: June 2023</p> <p>Project stage: Preliminary</p>
------------------------------------------------------------------------------------------------------------------------------------------------------------------------------------------------------------------------------------------------------------------------------------------------------------------------------------------------------------------------------------------------------------------	-------------------------------------------------------------------------------------------------------------------------------------------------------------------------------------------------------------------------------------------------------------------------------------------------------------------------------------------------------------------------------------------------------------------------------------------------------------------------------------------------------------------------------------------------------------------------------------------------------------------------------------------------------------------------------------------------------------------------------------------------------------------------------------------------------------------------------------------------------------------------------------------------------------------------------------------------------------------------------------------------------------------------------------------------------------------------------------------------------------------------------------------------------------------------------	--------------------------------------------------------------------------------------------------------------------------------------------------------------------------------------------------------------------------------------------------------	---------------------------------------------------------------------------------------------------------------------------------------------------------------------------------------------------------------------------------------



MALLEE HOUSE

LEGEND

N/A

PROJECT



Australian Government



Australia's guide to environmentally sustainable homes



Design For Place

DESIGN

Mallee House

DESIGNED FOR
Melbourne

Technical drawings should be read with the Mallee House Melbourne 'Design Options' document which includes building specifications and rating information.

DETAILS

Drawing title: Setout Plan

Scale: 1:100

Paper size: A3

Drawing number: 10/11

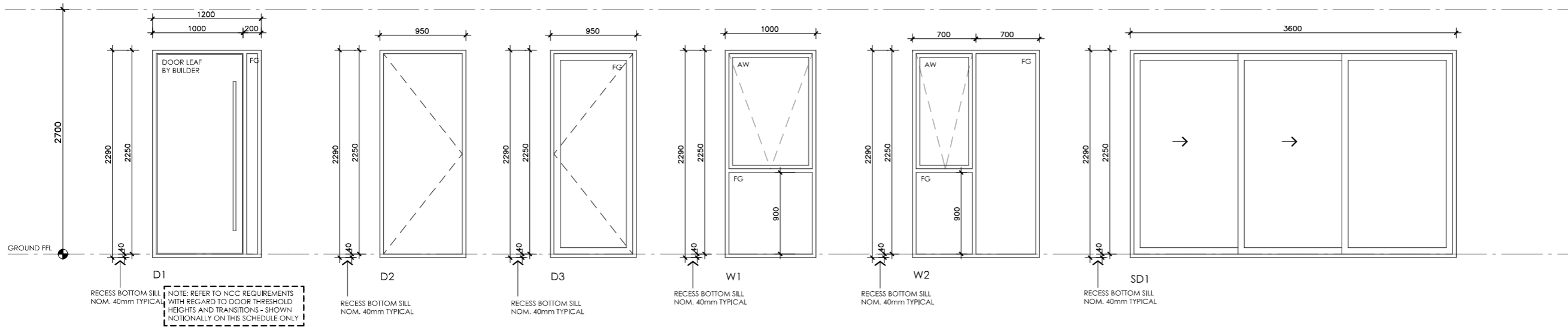
Date issued: June 2023

Project stage: Preliminary



DISCLAIMER

This house plan is a guide only. It does not constitute legal or other professional advice. You should seek legal or other professional advice in relation to your specific circumstances before adopting any recommendation made within it e.g. advice on structural engineering or building certification requirements. The Commonwealth does not accept responsibility for the accuracy or completeness of this plan, its fitness for a particular purpose, or compliance with any regulatory requirements and standards. Further, the Commonwealth also disclaims liability, to the extent permitted by law, for any liabilities, losses, damages and costs arising from any reliance on the contents of this plan.



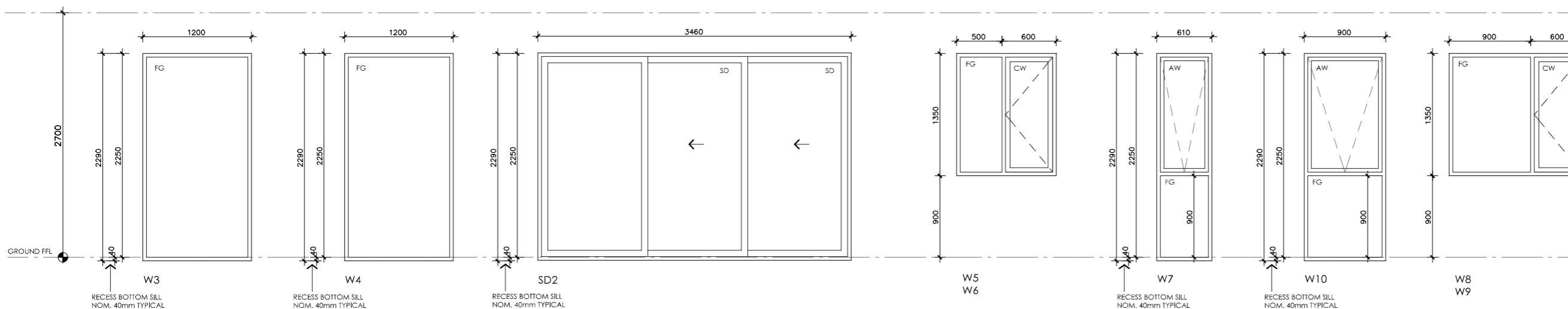
NOTES

NOTE: FABRICATOR TO CONFIRM WHICH WINDOWS/DOORS REQUIRE LAMINATED SAFETY GLASS AND SPECIFY ACCORDINGLY. ALL GLAZING TO CODE REQUIREMENTS

NOTE: FRAME SECTION WIDTHS DIMENSIONED ARE NOTIONAL ONLY. FABRICATOR TO CONFIRM FRAME SECTION SIZE

NOTE: OVERALL WINDOW DIMENSIONS NOMINAL ONLY - CHECK MEASURE EXISTING OPENING ON SITE PRIOR TO ORDERING

NOTE: REFER TO SPECIFICATIONS DOCUMENT FOR FRAME TYPE, AND GLAZING PERFORMANCE VALUES (U-VALUE AND SHGC)



MALLEE HOUSE

LEGEND

- FG FIXED GLASS
GLAZING TO CODE REQUIREMENTS
- CW CASEMENT SASH
GLAZING TO CODE REQUIREMENTS
- AW AWNING SASH
GLAZING TO CODE REQUIREMENTS
- SD SLIDING DOOR
GLAZING TO CODE REQUIREMENTS
- SSD SLIDING STACKER DOOR
GLAZING TO CODE REQUIREMENTS
- SW SLIDING WINDOW
GLAZING TO CODE REQUIREMENTS

PROJECT



DISCLAIMER

This house plan is a guide only. It does not constitute legal or other professional advice. You should seek legal or other professional advice in relation to your specific circumstances before adopting any recommendation made within it e.g. advice on structural engineering or building certification requirements. The Commonwealth does not accept responsibility for the accuracy or completeness of this plan, its fitness for a particular purpose, or compliance with any regulatory requirements and standards. Further, the Commonwealth also disclaims liability, to the extent permitted by law, for any liabilities, losses, damages and costs arising from any reliance on the contents of this plan.

DESIGN

Mallee House

**DESIGNED FOR
Melbourne**

Technical drawings should be read with the Mallee House Melbourne 'Design Options' document which includes building specifications and rating information.

DETAILS

Drawing title: Window and Door Schedule

Scale: 1:50

Paper size: A3

Drawing number: 11/11

Date issued: June 2023

Project stage: Preliminary